



July 2022 Newsletter

Zavala County

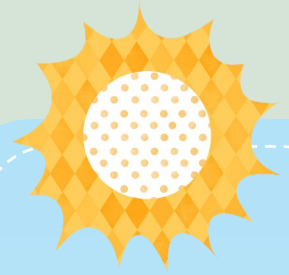
New Agent Introduction

Good afternoon Zavala County,

My name is Leslie Dominguez. I am your new Agriculture and Natural Resources- County Extension Agent. I was born and raised in Laredo, Texas. I earned my bachelor's degree in 2019 in Agriculture Science with a minor in Plant and Soil Science at Texas A&M University- Kingsville (TAMUK). Shortly after, I began working at Innovative Seed Solutions (ISS) in Bishop, Tx, a sorghum breeding research facility. I earned my master's degree in May of 2022 in Agriculture Science with a concentration in Plant and Soil Science. During my two years of graduate school, I conducted studies dealing with agricultural education within the College of Agriculture at TAMUK. I had the opportunity to present my research studies in Montana, Louisiana, and Oklahoma.

I am so excited to be joining such a great community and cannot wait to meet everyone. I hope I can serve the community in aspects you all need, as well as learn from the people of the community. Please do not hesitate to contact me with any questions.

Thank you,
Leslie Dominguez
830-374-2883

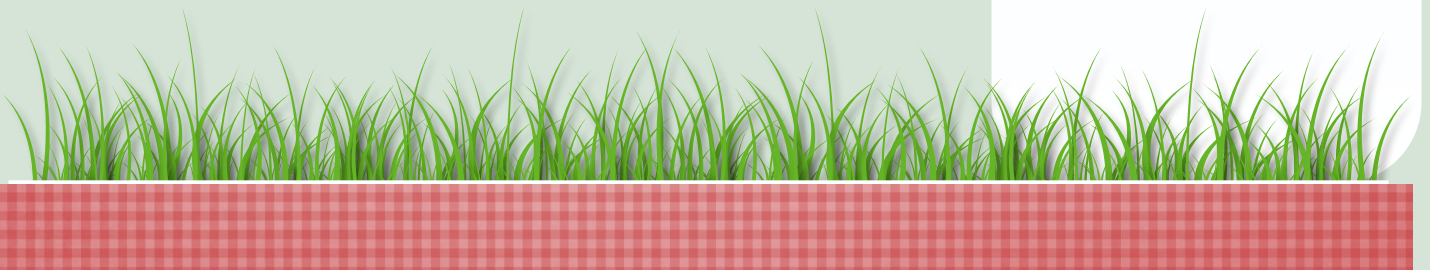


Inside this issue

New Agent Introduction.	1
Drought Update	2
Lawn Water Management	3& 4
4-H Club Officer Elections	5
4-H Member Enrollment	5
Tag Ordering for Major Shows	5
Better Living for Texans .	6
June Recap.....	7&8

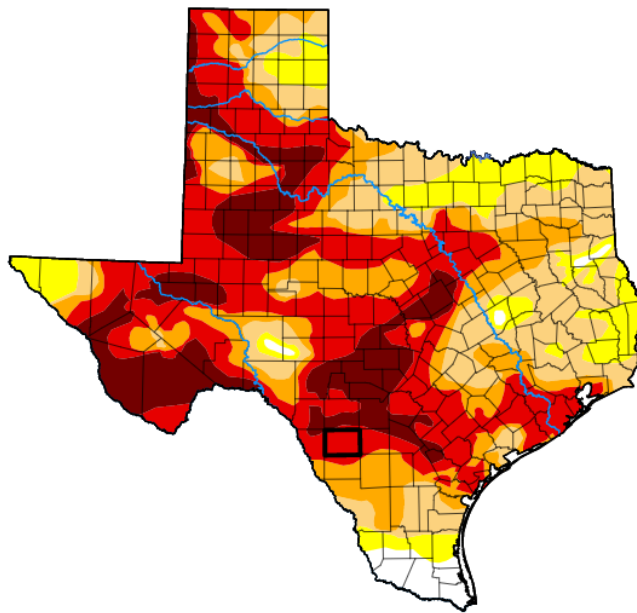
Important Dates

08/01	Sheep and Goat Tag Ordering for Major Shows
08/15	Deadline to Order Tags
08/15	4-H Member Enrollment Begins



Drought Update

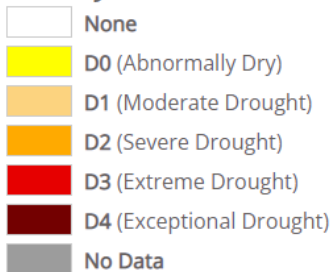
Zavala County, TX



Map released: Thurs. July 7, 2022

Data valid: July 5, 2022 at 8 a.m. EDT

Intensity



Authors

United States and Puerto Rico Author(s):

Brad Pugh, NOAA/CPC

Pacific Islands and Virgin Islands Author(s):

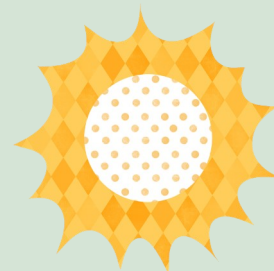
Brad Rippey, U.S. Department of Agriculture

*The Drought Monitor focuses on broad-scale conditions. Local conditions may vary. See accompanying **text summary** for forecast statements.*

[Zavala County, TX | U.S. Drought Monitor \(unl.edu\)](https://www.unl.edu/drought)



Lawn Water Management



By: James McAfee

Homeowners know how important water is to a healthy lawn. Water is a limited resource in Texas, and it will become more limited as the population grows. Water rationing programs and rising water prices are already occurring in some areas of the state.

Homeowners can conserve a significant amount of water with no loss in grass quality by learning to water their lawns properly. Most homeowners drastically over-water their lawns. Over-watering can harm lawn quality more than under-watering. To establish an irrigation plan for your lawn, consider soil type, grass variety, management practices, and environmental conditions.

Management Practices:

The way you care for your lawn affects the amount of water it will need. You can conserve water by properly fertilizing, mowing, controlling thatch, reducing soil compaction, and considering the salt content of water in the region.

When to Water:

Rather than watering on the same schedule each week, adjust your watering schedule according to the weather. Irrigate deeply. Then wait until the grass begins to show signs of drought stress before watering again.

Symptoms of drought stress include grass leaves turning a dull, bluish color, leaf blades rolling or folding, and footprints that remain in the grass after walking across the lawn. To time watering properly, look for the area of the lawn that shows water stress first. Water the entire lawn when that area begins to show symptoms.

How Much to Water:

Thoroughly wet the soil to a depth of 6 inches with each watering. Shallow watering produces weak, shallow-rooted grass that is more susceptible to drought stress.

Soil type, sprinkler style and water pressure determine how much water is needed to wet the soil to a depth of 6 inches and how long a sprinkler must run.



Lawn Water Management (cont.)

Use the following steps to determine how long to run your sprinkler or irrigation system:

- Set five to six open-top cans randomly on the lawn (cans with short sides such as tuna or cat food cans work best).
- Turn the sprinkler head or system on for 30 minutes.
- Measure and record the depth of water caught in each individual can.
- Calculate the average depth of water from all of the cans. For example, you have used five cans in your yard. The amount of water found in the cans was as follows: 0.5 inch, 0.4 inch, 0.6 inch, 0.4 inch, and 0.6 inch. Add the depths together and then divide by the number of cans you used (five in this case)
- $1.5\text{ inch} + 0.4\text{ inch} + 0.6\text{ inch} + 0.4\text{ inch} + 1.6\text{ inch} = 2.5\text{ inches}$, 5 cans = 0.5 inch of water in 30 minutes
- Use a garden spade or a soil probe to determine how deeply the soil was wet during the 30-minute time period. The probe will easily push through wet soil but less easily into dry areas.



- From the amount of water that was applied in the 30-minute cycle and the depth that it wet the soil; you can then determine how long the sprinkler must run to wet the soil to a depth of 6 inches.



4-H Club Officer Elections

Attention: Crystal City 4-H, La Pryor 4-H, Batesville 4-H

Please get in contact with County Extension Agent to schedule a day to hold 4-H club officer elections.

Club officer elections need to be done before July 18th, 2022.

4-H Member Enrollment

4-H member enrollment will begin August 15th.

Please stop by the office if you have any questions.

Sheep and Goat Tag Ordering for Major Shows

Attention Students and Parents:

Tag ordering for sheep and goat will begin August 1st @ the Zavala County AgriLife Extension Services office.

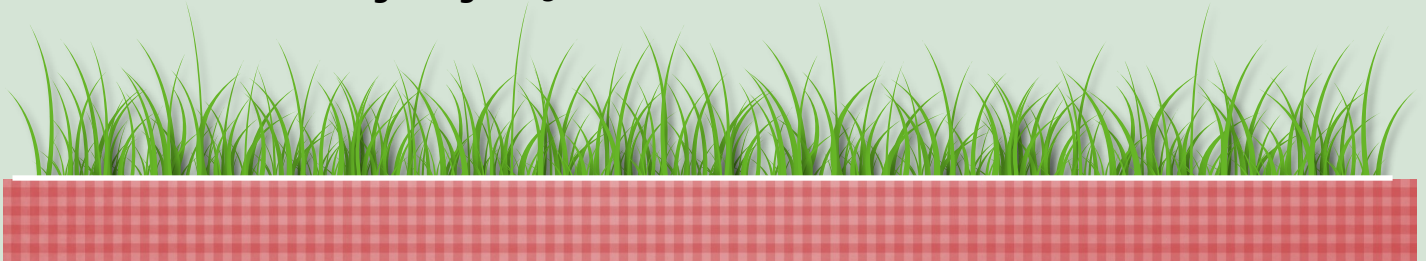
221 N 1st Ave

Crystal City, Tx 78839

Price: \$17.00

CASH ONLY

Deadline to order tags: August 15th



Hello! I hope you all are enjoying your summer. BLT summer classes have ended and I have now begun to plan for the fall. I will be reaching out soon to community partners to schedule classes for year 22-23.

Here is a bit of a recap of the programs that were completed in Zavala County.

In May 2023 we completed the Color Me Healthy program at the Avance Daycare in La Pryor. The students enjoyed learning about new fruits and vegetables and where they come from.

The 2-4th grade students at Batesville Elementary completed the Learn, Grow, Eat, and Go series, and the Prek-1st grade students completed the preschool Learn, Grow, Eat and Go series. We put in two raised garden beds and planted vegetables for the students of the school.

In May of 2023 the Home of Living Faith participated in the Growing and Nourishing healthy communities program and finished in June 2023. We put in 3 garden beds and planted many vegetable plants that will serve the Crystal City community for a very long time.

In June of 2023 I collaborated with Vida Y Salud, the Dimmit/Zavala Wesley nurse, and SWTJC to bring a Hypertension Event to the community members of Zavala County. We had many participants that learned about tips on improving their self care and how to be more mindful about their health.

Thank you to all my community partners for collaborating with me to bring nutrition and wellness classes to help create positive change in the lives of Zavala County.

-Carissa Munoz



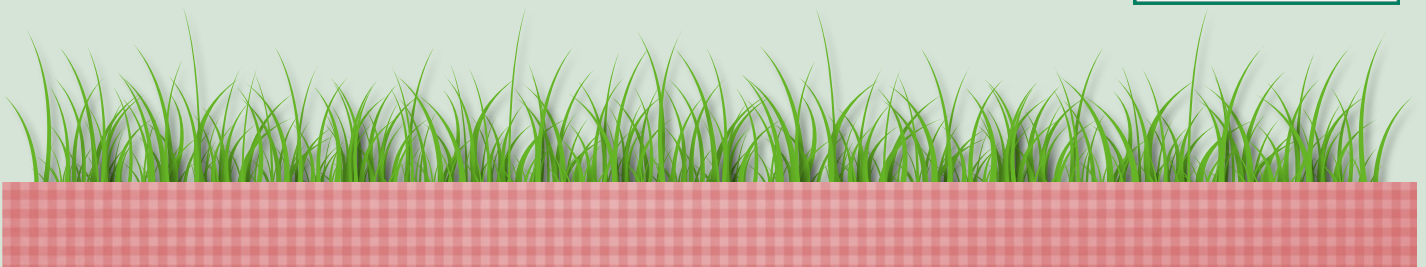
June Recap

Texas Parks and Wildlife
6th Annual Popeye Kid Fish
June 25, 2022



Texas A&M
AgriLife Extension Services- Zavala County's ANR Agent and Office
Manager Attended the event to promote 4-H new member enroll-
ment.

Hosted by Zavala County Game Warden,
Stautzenberger, Chris P
830-374-7029



Fundraiser for Families in Uvalde County

June 4, 2022

Texas A&M AgriLife Extension Services- Zavala County's office manager, Mariana Vargas along with our local Zavala County 4-H club members from Batesville, Crystal City, and La Pryor volunteered to assist The Nights of Columbus Council #8368 to fundraise for the families of the victims of Uvalde Rob Elementary. The fundraiser included a chicken and sausage plate sale. Together they raised a total of \$4,239.00.

