

Extension Education — Making a Difference in Waller County 2020 Quarterly Report— April-June



Extension Faculty



Stacie M. Villarreal

CEA - AG/NR & 4-H

BS - Agriculture

MS - Wildlife Science



Stedman Douglas

EA - CEP— Ag/NR

BS - Animal Science



Clara Walker

EA— CEP— FCH

BS - Criminal Justice

MS— Human Science

Agriculture and Natural Resources

- As of 06/30/20, 38 WCMGs have provided 2,200 hours of volunteer time to the community valued at 44,000!
- As of 06/30/20, 38 WCMGs have done 189 hours of Continued Education hours.
- Junior Master Gardener program had 16 youth participate in the 2 week long summer program which let them become Junior Master Gardeners. They were able to plant vegetables in the raised beds.
- Coordinated a webinar for CEU's with one of the district specialists, topics included NOT beef burgers, Hemp, brush control and others, 1 attended.
- Led Soil campaign with Grimes; 4 clients with a total of about 7 samples.
- Monthly Ag newsletters have reached about 850 people every month.
- Worked on updating the Waller County Extension website, event calendar, organization and layout.
- Worked on a Beef & Forage Initiative team to provide programs via technology to landowners in the 36 counties within our Southeast region.
- Beef & Forage Initiative team held 2 workshops via Microsoft Teams, broadcast to all 36 counties.
- Held 2 blood drives at the office to help with the need for blood during Covid-19, had 48 individuals who donated.
- Worked with District Attorney's office and Master Gardeners to put a garden in the 'backyard' of the DA's office for the community.

Family Community Health

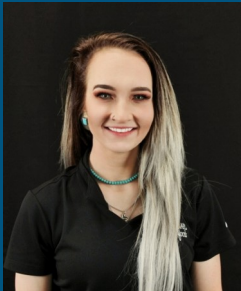
- Partnered with AgriLife FCH agents to form a school programming group to develop & share creative ways to continue to provide our youth with educational programming.
- Organized School Health Advisory Council meetings to evaluate how our schools & families can partner during the pandemic to implement effective communication & transparency within the community.
- Active Parenting with active readers series conducted with a total of 57 families online. The series fostered a fun & effective way to strengthen family bonds & promote literacy development by encouraging families to focus on reading together. Families reported the program increased family communication & improved relationships within the family dynamic.
- Collaborated with AgriLife & CEP FCH agents to create the aMAYzing Me Challenge calendar. The calendar was accessible with a link to click each day to take the participants to a short video or resource that supports them in achieving the daily challenge. Challenges were developed to assist our clientele to focus on what's important during the pandemic, while staying safe. Participants were encouraged to share personal photos, videos, or comments of their daily accomplishments by using #aMAYzingMeChallenge on social media. The calendar had 3065 users.
- Created a hand washing video in collaboration with Harris, Falls, McLennan & Wharton Counties to demonstrate CDC recommendations. The video has 117 views.
- Shared the Science of Parenting education from Iowa State Extension with parents participating in the Active Parenting Series which required a spin off par-



Russell Ford

EA- CEP- 4-H YD

BS - Animal Science



Dannah Jeske

4-H Program Assistant

BS-Animal Science

Support Staff



Debbie Tiner

Office Manager



Cindy McCorkle

Assistant Office Manager

enting series for 12 families.

- Completed Contact Tracing Training for disaster response & recovery of Covid-19. Agents connected with individuals who have come in contact with a person who is ill. These efforts allowed public health authorities to identify thousands of individuals who are also ill & who may not realize their symptoms are COVID-19 related, & others who are not symptomatic but need to be educated on how to monitor for symptoms and isolate if symptoms occur.

4-H and Youth Development

- Monthly 4-H Newsletters reached about 472 youth every month.
- Weekly 4-H Email reminders “Weekly Wire”, reached about 472 youth per week
- Created an online video for youth to create their own container garden using an empty water bottle, “ Bean in a Bottle”. Approximately 69 youth reached.
- In partnership with San Antonio Livestock Exposition, the Cooperative Extension Service awarded 120 youth scholarships to attend Youth Lab, a pre college outreach summer virtual program through 4-H and youth development.
- Partnered with Athletes for Computer Science to provide online coding classes virtually. Cohort 1 utilized three volunteers with a combined total of 24 hours, valued at \$652.80 and engaged 46 youth.
- County 4-H Participation:
 - ◊ Record books: 16 youth.
- District 9 Participation:
 - ◊ Horse Show 13 youth.
- State Participation:
 - ◊ Indoor Archery Contest: 10 youth* Canceled due to Covid-19
 - ◊ Validation of Major show Animals
 - Goats/Lambs: 14
 - Heifers: 23
 - Steers: 46

Fundraising and Scholarships

- 6 Adult Leader Parent Association Scholarship (ALPA) (\$2,500/4-Her) & 3 David McGregor Scholarships (Total- \$4,500) awarded.
- Texas 4-H opportunity Scholarship: \$3,000
- Club Scholarships Awarded: \$7,500 to 2020 Graduating 4-H Seniors
- Total County Scholarships Awarded to 4-H Youth in 2019-2020: \$27,000

Virtual Egg to Chick

- Virtual series covering egg to chick topics via Facebook
- Content available for Facebook viewers everyday during event
- On hatch day we had a live video of the eggs hatching and the chicks drying off
- Reached a total of 3,477 people virtually over the 2 week series

Educational Contacts

- 4-H Enrollment: 472 youth
- Community 4-H clubs: 16
- Leadership 4-H clubs: 2
- Adult Volunteer 4-H Leaders: 58
- Youth Volunteer 4-H Leaders: 55
- Total Educational Programs Conducted 39 sessions
- Total Individual Contacts 1,576
- Total Contact Hours 2,638
- Newsletter Contacts 8,558
- Volunteers Utilized 168
- Volunteer hrs. Contributed 271
- Total Contacts 11,124
- Total Website Views: 3,560
- Facebook Followers: 1,068

Contact Us

Texas A&M AgriLife Extension Service and Cooperative Extension Program, Waller County Office

846 6th Street, Hempstead, Texas, 77445 Phone: 979-826-7651, Fax: 979-826-7654,

E-mail: waller-tx@ag.tamu.edu Website: waller.agrilife.org