



Extraco Events Center
Waco, TX

February 6 – February 10, 2023

McLennan County Junior Livestock Show Table of Contents

Updated, Amended, & New Rules for 2023.....	3
GENERAL RULES & Information:.....	6
MARKET STEER DIVISION:.....	14
MARKET SWINE DIVISION:.....	15
MARKET LAMB DIVISION:.....	24
MARKET GOAT DIVISION:.....	28
MARKET BROILER DIVISION:.....	30
MARKET TURKEY DIVISION:.....	31
RABBIT DIVISION:.....	33
BEEF HEIFER DIVISION:.....	36
AGRICULTURAL MECHANICS DIVISION:.....	38
AG MECHANICS MARKET PLACE COMPETITION DIVISION.....	42
MCJLS BOARD of DIRECTORS:.....	46
MCJLS SHOW SCHEDULE:.....	47

Updated, Amended, & New Rules for 2023

○ McLennan County Junior Livestock Show Code of Conduct

Code of Ethics: The McLennan County Junior Livestock Show is a family friendly event. As such, an individual's conduct as an exhibitor or a patron should be exemplary, and violators are subject to disqualification or removal from the show grounds. Violations include, but are not limited to:

- Disruptive or improper conduct
- Public display of profanity of any sort
- Violence of any sort
- Threatening behavior or the appearance of threatening behavior (threatening behavior as determined by the Executive Board)
- Direct criticism or interference with the judge or livestock show management, other exhibitors, classifiers, or show officials before, during, or after the competitive event is prohibited, (*Including Social Media*). In the furtherance of their official duty, all judges and livestock show management, or other show officials shall be treated with courtesy, cooperation, and respect and no person shall direct abusive or threatening conduct toward them
- No exhibitor or parent shall conspire with another person or persons to intentionally violate this Code of Ethics or knowingly contribute or cooperate with another person or persons either by affirmative action or inaction to violate this Code of Ethics. Violation of this rule shall subject such individual to disciplinary action

○ Amend Rule #17 under Competition section

Once an entry has entered the showing for competition, said animal cannot be pulled, or scratched from competition with penalty. That showman forfeits any awards that come with that particular placing and is no longer eligible to show any other livestock of the same species for the duration of the show. Entry that placed below will move up in placing and is now eligible for those awards forfeited by the previous showman.

- Example: If a division champion does not come back for the overall drive, then the reserve champion of that particular drive will now be considered champion of the drive and judged as such.
- Class winners – If a 1st place animal does not come back for their particular weight division drive then the 2nd and 3rd place animals move up.
- Showman forfeits any and all winnings for that particular animal and is no longer eligible for the sale of champions for that year with that species.

○ Addition to Sale of Champions Section regarding exhibitor attending sale and no notification was given

Exhibitors are responsible for checking in the night of the sale and attending the auction, if unable to attend due to approved conflict, the exhibitor is responsible for notifying advisor and securing someone to take their place during the sale. If no one attends, or is notified the exhibitor is subject to forfeit their sale slot and any monies awarded for sale slot

○ Market Steers

1. **Updated Weights in Rule #7**–SHOW WEIGHTS: Exhibitors will turn in the official show weight for their steer at check-in. The minimum show weight for all market steers is 1,000 pounds. All steers weighing less than 1,000 pounds will be sifted.

○ Market Swine

○ Amended Rule #6- addition of Berkshire Breed

Animals will be divided into classes by breed and weight. Breeds include Duroc, Hampshire, Yorkshire, Berkshire, Light OPB, Dark OPB, and Crossbred. Breed classification will be submitted on weight card which must be completed by 7:00 p.m. on the day of move-in. The breed must be declared upon check-in; however, final determination of breed classification will be made by classifiers appointed by the Show Management

○ Addition of Rule #8- Any swine breed exhibited that is not listed in the classification guidelines (Duroc, Hampshire, Yorkshire, Berkshire, Light OPB(Chester, landrace), and Dark OPB (spots & Poland Chinas)) will be classified as a crossbred

○ Updated Rule #11 - number of head to make a breed

Breeds with less than ten (10) animals will be combined into the crossbred class, with the exception of the Berkshires which will go into the Dark OPB

○ Updated Rule #13 - Minimum Weights SHOW WEIGHTS: Exhibitors will turn in the official show weight for their barrow at check-in. The minimum show weight is 230 pounds.

○ Updated Rule #17- Swine Show Order

Show order will be: Light OPB, Dark OPB, Berkshire, Yorkshire, Duroc, Hampshire, Crossbred

○ Market Lambs

○ Breed Classification guidelines- addition of the Texas Major Show Sheep Breed Classification Guidelines (see page 24)

○ Addition of Rule #7- Medium Wool Divisions- Medium Wool Division classes will be divided into weight divisions as equally as possible. The show superintendent will determine the number of divisions, with a minimum of three (2)

○ Updated Rule #8 for classed out sheep- Breeds with less than five (5) animals will be combined as follows:

- a. Finewool to Finewool Cross
- b. Finewool Cross to Medium Wool
- c. Southdown to Medium Wool
- d. Dorper to Medium Wool

○ Updated Minimum Weights in Rule #10-SHOW WEIGHTS: Exhibitors will turn in the official show weight for their lamb at check-in. The minimum show weight is 95 pounds (with the exception of Southdowns and Dorpers, which must weigh a minimum of 85 pounds)

○ Market Goats

○ Updated Rule #9-Minimum Weight SHOW WEIGHTS: Exhibitors will turn in the official show weight for their Goat at check-in. The minimum show weight is 55 pounds

○ Rabbit

○ Updated Breeder Rabbit Division Rules

- Updated Market Rabbit weight

- Ag Mechanics
 - Addition of All Ag Mech rules into general Rulebook- see page 37
 - Addition of Ag Mechanics Market Place Competition – See page 41

Rules and Regulations

Show Superintendent – Anthony Meurer

GENERAL RULES & Information:

1. The McLennan County Junior Livestock Show (MCJLS) is sponsored by the McLennan County Youth Activities Association, Inc., hereinafter referred to as “Corporation,” to promote and encourage the educational programs of members of McLennan County 4-H Clubs, FCCLA, and FFA Chapters. All correspondence concerning the show should be addressed to:
McLennan County Youth Activities Association, Inc.
P.O. Box 8990
Waco, Texas 76714-8990
2. The Corporation reserves to the President, or the Vice President in the absence of the President, or to a committee created by the Board of Directors, the final and absolute right to interpret the rules and regulations of the show and to arbitrarily settle and determine all matters, questions and differences in regard thereto, and the right to amend and/or add to these rules as judgments may determine. If a committee is created it will consist of the President, 1st Vice President, 2nd Vice President, Secretary, Treasurer and the Ethics Committee.
3. The Corporation will in no case be responsible for any loss or damage that may occur. Each exhibitor will be solely responsible for any consequential or other loss, injury or damage done to, or occasioned by, or arising out of or in any way connected with such exhibitors or any of the animals.
4. Exhibitors are required to familiarize themselves with the rules and regulations of the MCJLS. Failure to abide by the rules set forth by the board of directors of the MCJLS will result in disqualification of the current show, withholding of any and all premiums, and possibly being banned from future shows.
5. The special rules and regulations of the Corporation shall be those specifically established to govern the operation of the McLennan County Junior Livestock Show and shall be approved by the Board of Directors and published. In no case shall special rules be in conflict with the Constitution and By-Laws.
6. All exhibits shall be under the control and direction of the General Show Superintendent, to be appointed annually by the Board of Directors
7. No exhibitor who shows an animal in any other county livestock show twelve (12) months preceding the MCJLS, will be eligible to show an animal in the MCJLS, unless approved by the board of directors.

8. The Corporation reserves the right to review the project program of exhibitors. Committees may be appointed to check exhibits for authenticity.
9. All classes of livestock entered in fairs and expositions in Texas, shall be subject to all regulations and requirements that then exist, or may be prescribed by the Texas Animal Health Commission to control and eradicate any outbreak of contagious, infectious or communicable disease and exposure thereto.
10. All protests must be in writing and accompanied by a deposit of \$250.00 in cash, which will be forfeited if protest is not sustained. Such protest must state plainly the cause of complaint, or appeal, and must be delivered to the management a minimum of one hour after the conclusion of the show of the division protested. Each protest should be delivered to management by an agriculture science teacher or county extension agent.
11. If an animal dies on the premises, a show official must be notified before the animal is removed from the grounds. The Corporation reserves the right to order a necropsy at the owner's expense. The necropsy will be performed at a location chosen by the Corporation.
12. No fund raising (raffles, give aways, etc) will be allowed during the week of the show or during the Sale of Champions.
13. The barn will be shut down at 11:30 p.m. and reopen at 5:00 a.m. each day of the show. No one will be allowed in the barn during this time.
14. Code of Ethics: The McLennan County Junior Livestock Show is a family friendly event. As such, an individual's conduct as an exhibitor or a patron should be exemplary, and violators are subject to disqualification or removal from the show grounds. Violations include, but are not limited to:
 - Disruptive or improper conduct
 - Public display of profanity of any sort
 - Violence of any sort
 - Threatening behavior or the appearance of threatening behavior (threatening behavior as determined by the Executive Board)
 - Direct criticism or interference with the judge or livestock show management, other exhibitors, classifiers, or show officials before, during, or after the competitive event is prohibited, (*Including Social Media*). In the furtherance of their official duty, all judges and livestock show management, or other show officials shall be treated with courtesy, cooperation, and respect and no person shall direct abusive or threatening conduct toward them
 - No exhibitor or parent shall conspire with another person or persons to intentionally violate this Code of Ethics or knowingly contribute or cooperate with another person or persons either by affirmative action or inaction to violate this Code of Ethics. Violation of this rule shall subject such individual to disciplinary action

NEW 2023

ENTRY REQUIREMENTS:

1. **NON-ADHERENCE TO THE RULES:** Any person found guilty of misrepresentation, fraud or not abiding by the Rules (whether in this exhibitor handbook, or otherwise) will be disqualified and denied the privilege of competing at the Fair.
2. **ENTRY ELIGIBILITY:** The Fair does not discriminate against any applicant, exhibitor, volunteer, customer or patron on the basis of race, sex, color, age, disability, religion, citizenship, veteran status, nationality or ethnic origin.
 - a. An exhibitor must be regularly enrolled in an accredited public or private school in McLennan County of less than college level and must be 8 years old **and** in the 3rd grade as of January 1st, and not more than 19 years old on January 1st.
 - b. Home school students as defined by the State of Texas must reside in McLennan County.
 - c. All exhibitors must be eligible to show according to U.I.L. Eligibility Rules. If an exhibitor is ineligible, the exhibit is ineligible. Agriculture Science Teachers (AST) and County Extension Agents (CEA) are responsible for checking eligibility prior to the show. FFA members must be certified eligible by the AST and 4-H members must be certified eligible by the CEA.
 - d. Exhibitors must be a bona fide “active” member in good standing of a 4-H club or FFA Chapter in McLennan County.
3. **Entry process for MCJLS market animals:**
 - a. **Validation:**
 - i. Major livestock show/state validation tags are acceptable for MCJLS validation.
 - ii. The superintendent for each division will set a validation date for the respective division. When possible, the county validation date will coincide with the state validation date.
 - iii. Animals that are not validated with major livestock show/state validation tags will be charged \$2 per tag for county validation tags, which will be paid at the time of validation.
 - iv. A validation form must be completed and turned in to a MCJLS representative at the time of validation. No validation form will be accepted without the participant’s CEA or AST signature.
 - v. There is no limit on the number of animals a participant may validate.
 - vi. All state and MCJLS Only validated livestock should be housed at the home of the livestock exhibitor or a family member or at a county or school ag facility.
 1. If the previous facilities do not exist, an alternative facility may be investigated to house the livestock. A facility of this nature can only be explored after previously listed facilities have been exhausted. Alternative facilities must be within the exhibitor’s county and/or school district, unless deemed appropriate and approved by the validation committee and MCJLS Board.

- vii. Ownership Deadlines:
 - a. Market Steers- Major Validated June 30th, MCJLS Only Validated September 13th
 - b. Market Swine- November 30th
 - c. Market Lambs- October 30th
 - d. Market Goats- October 30th
 - e. Breeding Heifers- October 30th
 - f. Market Rabbits- January
 - g. Breeding Rabbits- January

- b. Entries:
 - i. Entry forms must be submitted to the participant's County Extension Agent or Agriculture Science Teacher by December 10th preceding the McLennan County Junior Livestock Show.
 - ii. A non-refundable entry fee of \$25 per animal for cattle, lambs, goats, swine, rabbits, and poultry will be charged and must be submitted with the entry form to the participant's CEA or AST.
 - iii. Entry forms received after December 10 will be charged a late fee of \$60 per entry in addition to the original entry fee(s). Absolutely no entry forms will be accepted after December 26. The entry fee(s) and late fee(s) must be submitted with the entry form to the participant's CEA or AST.
 - iv. Each participant may enter up to three animals per division in the following divisions: steers, lambs, goats, and swine.
 - v. Each participant may enter up to two pens per order of broilers.
 - vi. Each participant may enter up to two turkeys per order.
 - vii. Each participant may enter up to three meat pens of rabbits.

COMPETITION

1. Judges Selection: Judges will be selected by Association management; judges will be familiar with all Rules and division requirements.
2. No exhibitor who shows an animal in any other county livestock show twelve (12) months preceding the MCJLS, will be eligible to show an animal in the MCJLS, unless approved by the board of directors.
3. Show officials reserve the right to remove objectionable animals from the show grounds. The division superintendent or classifier/ sifter is instructed and authorized to disqualify from weighing and showing any animal deemed unsuitable, diseased, or undesirable.
4. All livestock must be owned by the exhibitor on the date of validation for that division. The animal(s) must be cared for by the exhibitor during the entire feeding period and supervised by a County Extension Agent or Agriculture Science Teacher.

5. The Corporation reserves the right to review the project program of exhibitors. Committees may be appointed to check exhibits for authenticity.
6. The decisions of the judges shall be final in all cases except where mistakes, fraud, misrepresentation, or collusion, not discovered at the time of the award, is proved. In such cases, the appeal may be taken to the President of the Board of Directors or to the Vice President in the absence of the President, or to a committee that may be created by the Board of Directors, from whose decision there can be no appeal.
7. All protests must be in writing and accompanied by a deposit of \$250.00 in cash, which will be forfeited if protest is not sustained. Such protest must state plainly the cause of complaint, or appeal, and must be delivered to the management a minimum of one hour after the conclusion of the show of the division protested. Each protest should be delivered to management by an agriculture science teacher or county extension agent.
8. All animals in the McLennan County Junior Livestock Show must be checked in by the division superintendents or their assistants by the times in show schedule.
 - a. Exhibitors will turn in the official show weights on all market animals at time of check in.
 - b. Weigh backs will take place on sale qualifying animals at time of show, animals weighing more than allowed or less than the minimum for that species will be disqualified.
 - c. Registration papers will be required on all animals in the breeding classes of beef.
 - d. Exhibitors will be assigned a pen or stall space by the show committee. All hogs, sheep, goats, and cattle must be bedded in their assigned space.
 - e. An exemption of the Certificate of Veterinary Inspection is granted for all livestock and poultry entering the McLennan County Junior Livestock Show in accordance with Section 161.082, Agriculture Code, Vernon's Texas Codes Annotated and Section 51.3, paragraph (d)(2) of the Texas Regulations Governing Entry of Livestock and Poultry into Texas and into Shows, Fairs, and Exhibitions. Temperaturing swine is not required in local livestock shows.
9. No exhibitors, whether by in person or by agent or servant, may interfere with the judges during their adjudication, or show any disrespect to the judge or to the show.
10. Should any animal awarded a prize be disqualified, animals gaining the lower prizes shall graduate up into higher positions next in order above them.
11. No exhibitor may utilize electronic communication or storage devices at any time during official judging.
12. Only show judges, exhibitors, ring stewards, and MCJLS officials will be allowed in the show ring.
13. Participants in the showmanship class must show an animal that said participant owns and exhibited in the show.

14. Exhibitor Substitutions- All show animals must be exhibited by its owner. Exceptions must receive approval of the General Show Superintendent. When an exception is approved, the person exhibiting the animal must be a bona fide “active” member in good standing of a 4-H club or FFA Chapter in McLennan County. Exceptions would include:
- a. When an exhibitor has more than one entry in the same class or an entry in another division showing at the same time.
 - b. When an exhibitor is sick. In this case, a signed statement from a doctor must be presented.
 - c. When an exhibitor is unable to show due to a conflict in schedule with other UIL activities. In this case, a statement signed by the school principal must be presented in advance of the show.
 - d. If an exhibitor has a physical handicap, a doctor’s statement will be required. Another McLennan County 4-H or FFA member will be allowed to assist in the showing of the project once the General Show Superintendent approves.
15. No exhibitor may show a market animal which has previously qualified or been sold at an auction or sale as a market animal at another county, regional, or major livestock show.
16. The showing of unethically fitted livestock, or livestock over age that is eligible for exhibition in the class in which such animal is being presented for exhibition is prohibited. Unethical fitting within the meaning of the rule shall be deemed to consist of any method altering the natural confirmation of any part of his animal being accepted for exhibition, specifically represents that no animal entered therein by him as his exhibit is unethically fitted or altered.
- a. No animal in the livestock division may show evidence of artificial coloring, paint, or powder. The only acceptable coloring shall be hoof dressing, to be used on hooves only.
 - b. No alcoholic substance may be used in preparation of any animal for show or sale.
 - c. Animals must be shown when and in such manner as the judge may require. If the exhibitor refuses to submit to the requirements, the animal in question will be disqualified. If an animal is unruly and becomes a danger to other exhibitors either in the barn or show ring, the exhibitor will be required to remove the animal from the premises.
17. Once an entry has entered the showing for competition, said animal cannot be pulled, or scratched from competition with penalty. That showman forfeits any awards that come with that particular placing and is no longer eligible to show any other livestock of the same species for the duration of the show. Entry that placed below will move up in placing and is now eligible for those awards forfeited by the previous showman.
- a. Example: If a division champion does not come back for the overall drive, then the reserve champion of that particular drive will now be considered champion of the drive and judged as such.
 - b. Class winners – If a 1st place animal does not come back for their particular weight division drive then the 2nd and 3rd place animals move up.
 - c. Showman forfeits any and all winnings for that particular animal and is no longer eligible for the sale of champions for that year with that species.

SALE of CHAMPIONS:

1. When an exhibit qualifies for the Sale of Champions, the exhibitor will receive a letter along the prize(s) for that placing. That letter must be filled out to indicate the exhibitor's intention to sell, not sell, or pending due to an exhibit not yet shown. Exhibitors and their parents are responsible for signing and returning the letter to the show office within 30 minutes after completion of the show. By signing this letter, exhibitors accept the responsibility of all requirements of selling their animals. Responsibilities include writing thank you notes to buyers, staying out of the buyers' area during the sale, not bothering the buyers, etc.
2. Exhibitors are responsible for checking in the night of the sale and attending the auction, if unable to attend due to approved conflict, the exhibitor is responsible for notifying advisor and securing someone to take their place during the sale. If no one attends, or is notified the exhibitor is subject to forfeit their sale slot and any monies awarded for sale slot
3. Only one exhibit per exhibitor may be sold at the Sale of Champions, unless the exhibitor has more than one exhibit that is the Grand Champion or Reserve Grand Champion.
4. An exhibit that is named overall Grand Champion or Reserve Grand Champion in the market division is required to sell in the Sale of Champions.
5. Once an exhibit is declared to sell in the Sale of Champions, the animal cannot be removed from the sale.
6. When an exhibit is pulled out of the sale, there is no loss of any prizes.
7. When an exhibitor withdraws an exhibit from the Sale of Champions, the following procedure will be used to fill that exhibit's place in the sale:
 - a. The sale committee and division superintendents will determine the number of animals in each division to move into the Sale of Champions.
 - b. The sales committee and division superintendents will randomly pick from the next highest placing animals in that division regardless of class. For example, if the top 4 placing animals automatically qualify for the sale, the random pick will come from all 5th place animals. If all 5th place animals are placed in the sale, the random picks will then be chosen from the 6th place animals. In a division that is shown by breed, the random pick will come from within that breed. This process will continue until the correct number of animals for each division is reached.
8. A sales committee will secure buyers and arrange for the highest prices possible for all animals in the Sale of Champions. However, the McLennan County Youth Activities Association, Inc. does not assume responsibility for any guaranteed price or assume welfare of the animal. Any exhibitor may secure bidders for their animal and the animal will be sold to the highest bidder accepted by the auctioneer. Teachers and agents are asked to secure help in the promotion of the sale and encouraged to work through the sales committee in order to have systematic procedure of collecting and paying the exhibitors for their animals. All payments will be made through the McLennan County Youth Activities Association, Inc.

NEW 2023

9. A four percent (4%) sales commission will be charged on each sale lot. Three percent (3%) of the gross of the sale will be used for operating costs of the show. One percent (1%) of the gross of the sale will fund an annual grant given to 4-H clubs and FFA chapters within the county.
10. A minimum of 18% of the total number of animals confirmed to show in each division will qualify for the Sale of Champions. The sale committee and division superintendents will add one percent (1%) from each division until at least 215 sale lots has been reached. This will be determined after animals have been weighed and confirmed for the show and before classes are posted.
11. No paint, glitter, decoration, or props will be allowed on any project in the sale ring.
12. All exhibitors must relinquish ownership of animals sold through the auction to the buyer. The Sale of Champions in conjunction with the McLennan County Junior Livestock Show shall be deemed a terminal sale for all animals sold. In no way shall an exhibitor retain or attempt to retain ownership of any of these market animals at any time prior to, during, or after the sale.
13. All sale animals with state or county validation ear tags/wing bands will have them removed by management prior to the auction. All ear tags will be removed and the animal will be tagged with an ear tag that corresponds to the sale lot number.
14. All non-sale animals will be released immediately after each division show.
15. MCJLS management will secure a floor buyer(s) for the show and prices will be posted. If an exhibitor chooses to floor a non sale animal, the necessary paperwork is located in the show office. Floor animals will be charged a 4% handling fee.
16. All non sale animals that have not been floored must be removed from the premises by noon on Friday the week of the show. Animals still on the premises at this time, without prior authorization, become the property of McLennan County Junior Livestock Show. These animals will be sold to the floor buyer and the money received will go into the MCJLS Scholarship Fund.
17. Only animals exhibited in the show ring are eligible to be floored.

MARKET STEER DIVISION:

Superintendent – TBA

Judge- Jon DeClerck

2. All general rules and regulations apply.
3. All market show and sale rules and regulations apply.
4. All steers exhibited in the MCJLS must be state validated or county validated. Steers may be state validated in the month of June. Steers may be county only validated in the month of September. Exact dates to be determined. Fees for county validation ear tags are due at the time of validation.
5. Steers will be validated in the presence of several officials of the McLennan County Youth Activities Association, Inc., County Extension Agents, Agriculture Science Teachers, etc. All steers will be ear tagged.
6. Animals will be divided into classes as equally as possible by weight only. The show superintendent will determine the number of classes based on total number of entries. The show superintendent has the authority to make the final decision on where to break classes based on weight.
7. CHECK-IN: Exhibitors must check-in with pre-distributed weight cards including validation tag number, weight, and declared breed. Check-in must be completed by deadline on check-in day or be subject to disqualification. Upon completion of check-in, exhibitors will receive show number for each animal checked in. Once an exhibitor has officially checked-in, the entry is final; no further changes can be made.
8. SHOW WEIGHTS: Exhibitors will turn in the official show weight for their steer at check-in. The minimum show weight for all market steers is 1,000 pounds. All steers weighing less than 1,000 pounds will be sifted.
9. WEIGH BACK: Any steer weighing more than 105% of the final declared weight will be disqualified. Steers weighing less than 95% than the official turn-in weight will be disqualified. The MCJLS Show Board reserves the right to weigh back any animal.
10. All steers must be slick shorn with a maximum of one quarter of one-inch length of hair everywhere except switch of tail. Animals must be clipped prior to weigh-in.
11. All cattle must be halter broken. Any animal that gets away from the exhibitor three (3) times will be disqualified and removed from the show ring. If an animal is disqualified after having been placed, the animals placing below will be moved up to fill the vacated position.
12. Steer showmanship classes will follow the market show. Showmanship will be divided into junior, intermediate, and senior divisions. Junior division will consist of exhibitors in grades 3-5. Intermediate division will consist of exhibitors in grades 6-8. Senior division will consist of exhibitors in grades 9-12.

1st – 10th place will receive a ribbon.

Grand Champion and Reserve Grand Champion will receive additional awards.

Showmanship winners will receive a belt buckle and runner-up will receive a plaque.

MARKET SWINE DIVISION:

Superintendent – Jody Wood

Judge- Brad Bevel

1. All general rules and regulations apply.
2. All market show and sale rules and regulations apply.
3. All hogs exhibited in the MCJLS must be state validated or county validated in the month of November. Exact dates to be determined. Fees for county validation ear tags are due at the time of validation.
4. Hogs will be validated in the presence of several officials of the McLennan County Youth Activities Association, Inc., County Extension Agents, Agriculture Science Teachers, etc. All hogs will be ear tagged and ear notches will be recorded.
5. Barrows and open gilts are eligible to be shown.
6. Animals will be divided into classes by breed and weight. Breeds include Duroc, Hampshire, Yorkshire, Berkshire, Light OPB, Dark OPB, and Crossbred. Breed classification will be submitted on weight card which must be completed by 7:00 p.m. on the day of move-in. The breed must be declared upon check-in; however, final determination of breed classification will be made by classifiers appointed by the Show Management
7. Hogs will be classified as they enter to show. Classifiers will classify at the show using the New Swine Classification Guidelines adopted August 2019. The judgment of the sifting committee and classifiers is final and not subject to protest. Hogs classified out of the breed will be moved to their respective weight class in the cross division.
8. Any swine breed exhibited that is not listed in the classification guidelines (Duroc, Hampshire, Yorkshire, Berkshire, Light OPB(Chester, landrace), and Dark OPB (spots & Poland Chinas)) will be classified as a crossbred
9. The show superintendent will determine the number of classes based on total number of entries. The show superintendent has the authority to make the final decision on where to break classes based on weight.
10. In the event of a large number of swine with the same weight and same breed, the show may break these groups into multiple classes using another method other than weight.
11. Breeds with less than ten (10) animals will be combined into the crossbred class, with the exception of the Berkshires which will go into the Dark OPB .
12. CHECK-IN: Exhibitors must check-in with pre-distributed weight cards including validation tag number, weight, and declared breed. Check-in must be completed by deadline on check-in day or be subject to disqualification. Upon completion of check-in, exhibitors will receive show number for each animal checked in. Once an exhibitor has officially checked-in, the entry is final; no further changes can be made
13. SHOW WEIGHTS: Exhibitors will turn in the official show weight for their barrow at check-in. The minimum show weight is 230 pounds
14. WEIGH BACK :The weight submitted at check-in will become the official declared weight to be used for weigh back and official selling purposes. All pigs selected by the judge will be reweighed before entering the arena. Pigs with weights below 220 lbs and pigs weighing more than or less than 10 pounds of their declared weight will be disqualified. Show management reserves the right to verify the weight of any hog selected by the Judge.

NEW 2023

NEW 2023

New 2023

NEW 2023

15. Hogs weighing less than 220 pounds are not eligible to be floored.

16. No one will be allowed behind the pens in the show ring. Water spray bottles will be provided in each pen for the exhibitor's use.

NEW 2023

17. Show order will be: Light OPB, Dark OPB, Berkshire, Yorkshire, Duroc, Hampshire, Crossbred

18. Swine showmanship classes will follow the market show. Showmanship will be divided into junior, intermediate, and senior divisions. Junior division will consist of exhibitors in grades 3-5. Intermediate division will consist of exhibitors in grades 6-8. Senior division will consist of exhibitors in grades 9-12.

1st – 10th place will receive a ribbon.

Breed Champions, Reserve Breed Champions, Grand Champion and Reserve Grand Champion will receive additional awards.

Showmanship winners will receive a belt buckle and runner-up will receive a plaque.

BARROW CLASSIFICATION STANDARDS

updated July 2019

A collaboration by the Texas County Agricultural Agents Association, Vocational Agriculture Teachers Association of Texas, Animal Industries Committee, Texas FFA, Texas 4-H and Texas Pork Producers Association.

All animals must be properly ear notched within seven (7) days of birth with a litter notch in the right ear and individual notch in the left ear to be eligible for the Texas 4-H and FFA Swine Validation Program. Animals not properly notched in both ears will be disqualified. Registration papers, breeder affidavits, or other paperwork is not considered in the classification process. Eligibility for the class is determined only by visual appraisal, as evaluated by classifiers appointed by show management.

LIGHT ALL OTHER PUREBREDS (LOPB): CHESTER WHITE:

Ideal Characteristics

- Solid white in color possessing Chester White breed character.
- Medium sized ears are down when hog is in a relaxed position.



Discriminatory Characteristics

- Partially erect/level ear (flighty).
- Skin pigmentation.



Acceptable Characteristics

- Ear deformity/ear folded in a backwards position towards hog's body/crinkled ear.

Absolute Disqualifications

- Erect ears.
- Colored hair.
- Color on the skin, cumulatively larger than a U.S. minted silver dollar.
- Any evidence of physical tampering that would alter breed character.



LANDRACE:

Ideal Characteristics

- Must be solid white and possess Landrace breed character.
- Ears droop and slant forward coming to a sharper point.



Discriminatory Characteristics

- Short rounded ears.
- Short snout mimicking that of a Chester White.



Acceptable Characteristics

- Ear deformity/ear folded in a backwards position towards hog's body/crinkled ear.

Absolute Disqualifications

- Erect ears.
- Any hair color other than white.
- More than 3 spots of skin pigmentation; each individual spot cannot be larger than a U.S. minted quarter.
- Any evidence of physical tampering that would alter breed character.



**DARK ALL OTHER PUREBREDS (DOPB):
POLAND CHINA:**

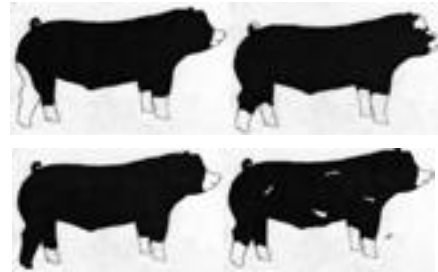
Ideal Characteristics

- Predominantly black possessing Poland China breed character.
- Six white points: nose, each leg/foot and at the end of the tail (unless tail is docked).
- Ears are down when hog is in a relaxed position.



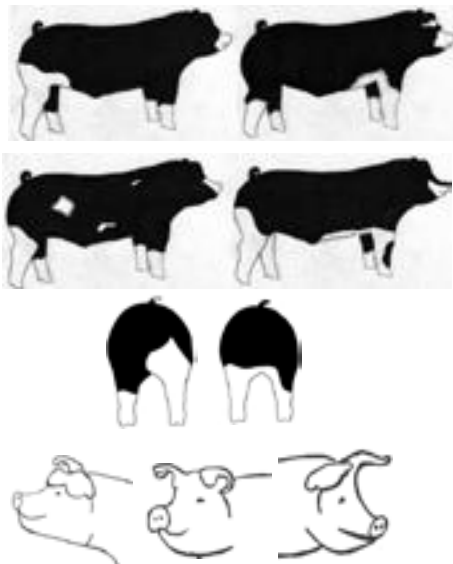
Acceptable Characteristics

- A slight continuation of white from the legs to the body.
- Ear can have white on it.
- Three of the four legs must be white.
- May have an occasional splash of white on the body.
- Hair and skin texture can vary from coarse to thin, and color can vary from dark black to ashy/pale.
- Ear deformity/ear folded in a backwards position towards hog's body/crinkled ear.



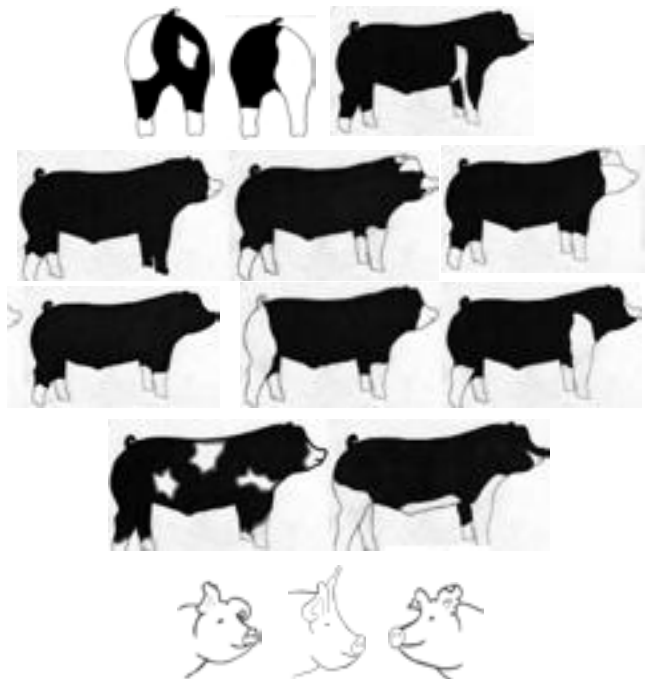
Discriminatory Characteristics

- Partially erect/level ears (flighty).
- A moderate continuation of white from the legs to the body.
- Moderate freestanding white, not attached to a leg.



Absolute Disqualifications

- Erect ears.
- Solid white or solid black face.
- More than one solid black leg.
- If the white on a solid white ear goes past the base of the ear.
- An excessive continuation of white from the legs, encompassing the upper hip or shoulder.
- Excessive freestanding white, not attached to a leg.
- Evidence of belt formation.
- Red or sandy hair.
- Any evidence of physical tampering that would alter breed character.



SPOTTED:

Ideal Characteristics

- Must be black and white, possessing Spotted breed character.
- Ears are down when hog is in a relaxed position.



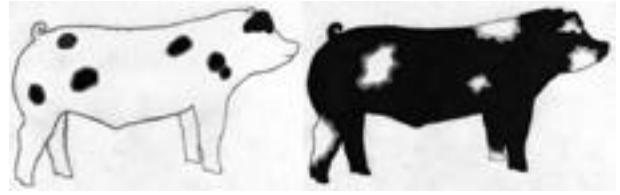
Discriminatory Characteristics

- Partially erect/level ears (flighty).
- Moderate brown spots.
-



Acceptable Characteristics

- Predominantly black with white spots or predominantly white with black spots.
- Ear deformity/ear folded in a backwards position towards hog's body/crinkled ear.



Absolute Disqualifications

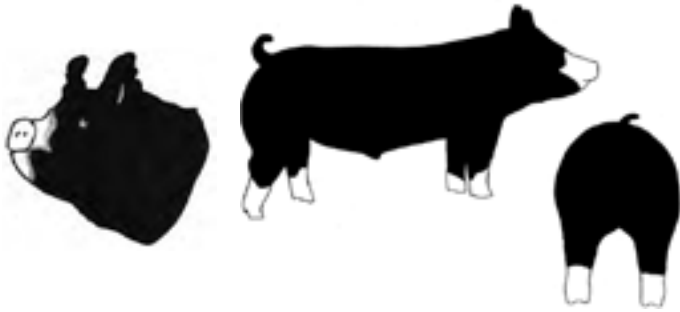
- Erect ears.
- Solid black head from base of ears forward.
- Distinct white belt pattern (hair or skin) encircling and extending down and onto each shoulder.
- Red hair.
- Excessive brown spots.
- Any evidence of physical tampering that would alter breed character.



BERKSHIRE

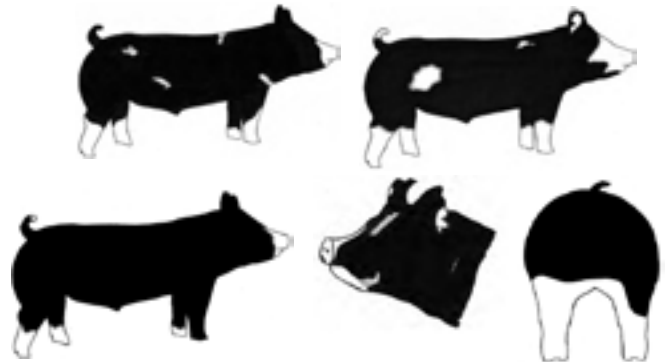
Ideal Characteristics

- Predominantly black with erect ears, possessing Berkshire breed character with regards to skull shape and ear shape.
- Six white points: nose, each leg/foot and at end of tail (unless tail is docked).



Acceptable Characteristics

- Occasional splash of white skin/hair may appear on the body.
- Three of the four legs/feet must be white.
- Ear can have white on it (not full coverage).
- Red or fawn hair, if over black or white skin pigmentation.
- Ear deformity/ear folded in a backwards position towards hog's body/crinkled ear.



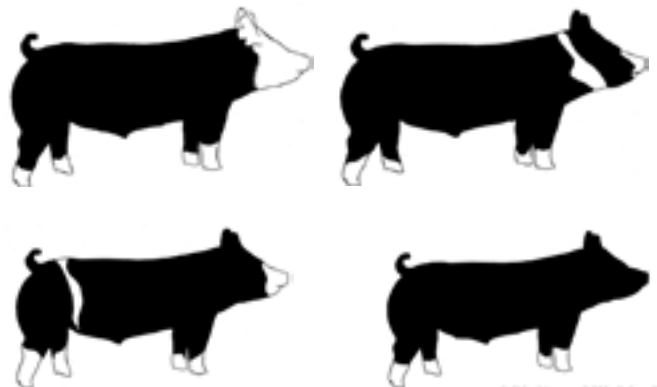
Discriminatory Characteristics

- Gray pigmentation on body (spotting/mottling pattern).
- Moderate amount of white skin splashes.



Absolute Disqualifications

- Solid white or black face from base of ear forward.
- Solid black nose (white does not break rim).
- Solid white ear.
- Excessive white on body.
- Full coverage of white coming up the lower 1/3 of the body (not counting legs) that extends from the base of the jaw thru sternum and lower body through seam of the ham.
- White splash extends from rear leg to upper hip.
- White skin/hair that continuously encircles the body anywhere between the base of the ear and the base of the tail.
- Any evidence of belt formation.
- Lacks breed character (skull and/or ear shape).
- Any evidence of physical tampering.



YORKSHIRE:

Ideal Characteristics

- Must be completely white in color with erect ears, possessing Yorkshire breed character.

Discriminatory Characteristics

- Excessively large or wavy ears.
- Color pigmentation (on body):
 - Two individual pigmentation spots of which neither can be larger than a U.S. minted dime.
 - One pigmentation spot cannot be larger than a U.S. minted quarter.

Acceptable Characteristics

- Ear deformity/ear folded in a backwards position towards hog's body/crinkled ear.

Absolute Disqualifications

- Any hair color that is NOT white.
- Broken/down ears.
- Combined pigmentation spots that exceed a U.S. minted silver dollar.
- Any series of dots that indicate masking.
- Any evidence of physical tampering that would alter breed character.

DUROC:

Ideal Characteristics

- Must be red in color, possessing Duroc breed character.
- Ears are down when hog is in a relaxed position.



Discriminatory Characteristics

- Minimal amounts of black hair.
- Black spots on the skin under two inches in diameter.
- Partially erect/level ears (flighty).



Acceptable Characteristics

- Acceptable colors range from light red to dark brown.
- Ear deformity/ear folded in a backwards position towards hog's body/crinkled ear.

Absolute Disqualifications

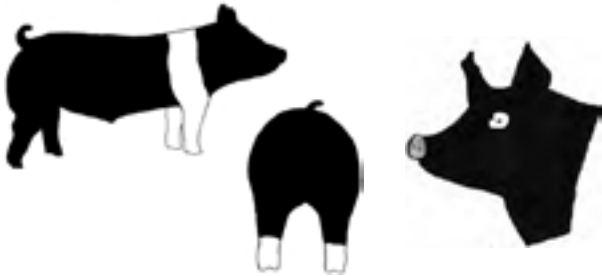
- Excessive amounts of black hair.
- White hair.
- White skin on the body or legs, or that extends over the rim of the nose.
- Four (4) or more black spots on the skin, any of which are larger than two (2) inches in diameter.
- Evidence of a belt.
- Erect ears.
- Any evidence of physical tampering that would alter breed character.



HAMPSHIRE:

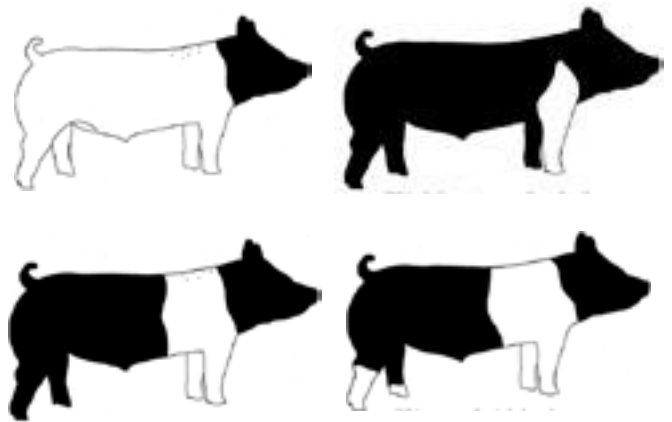
Ideal Characteristics

- Black in color with a full white belt over the shoulders encompassing both front legs/feet.
- Erect ears.
- Possess Hampshire breed character with regards to skull shape and ear shape.



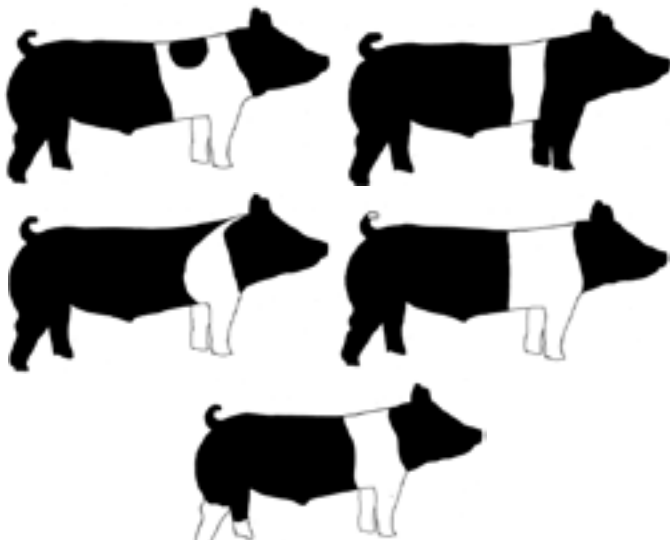
Acceptable Characteristics

- Black head with a white body, with evidence of pigment and freckling down the top.
- White belt starting on a front foot/leg; belt partially encircles body extending to at least the chest floor (half belt).
- Freckling in the belt.
- Ear deformity/ear folded in a backwards position towards hog's body/crinkled ear.



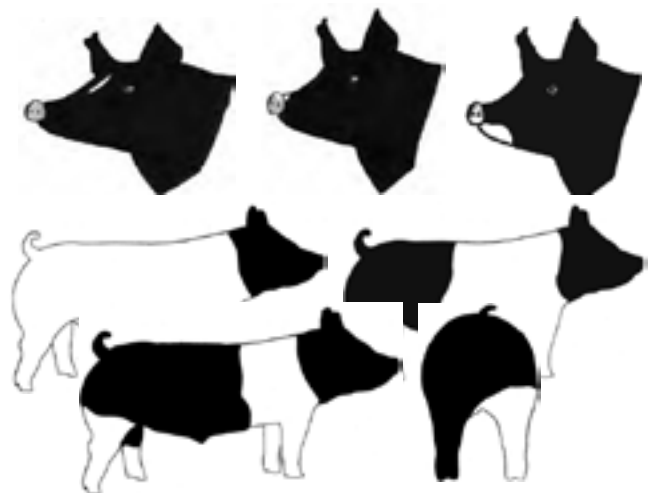
Discriminatory Characteristics

- Large spots within the belt.
- Belt is in front or behind of a solid black front leg.
- If belt v's and runs towards the poll (base of the ear).
- White tip on tail, if docked.
- White on rear leg extends to the base of the ham.



Absolute Disqualifications

- Streaking or evidence of white on forehead.
- White skin extends over the rim of the nose.
- When mouth is closed, the white under the chin cannot exceed what a U.S. minted quarter will cover.
- Black head with a white body without freckles or pigmentation.
- Belt extends past the sheath (sheath must be black).
- Excessive frosting or white hair outside the belt.
- Red hair.
- Droopy or floppy ears.
- Any evidence of physical tampering that would alter breed character.



MARKET LAMB DIVISION:

Superintendent – Kevin Goates

Judge- Josh Cody

1. All general rules and regulations apply.
2. All market show and sale rules and regulations apply.
3. All lambs exhibited in the MCJLS must be state validated or county validated in the month of October. Exact dates to be determined. Fees for county validation ear tags are due at the time of validation.
4. Lambs will be validated in the presence of several officials of the McLennan County Youth Activities Association, Inc., County Extension Agents, Agriculture Science Teachers, etc. All lambs will be ear tagged.
5. Wethers and open ewes are eligible to be shown.
6. Animals will be divided into classes by breed and weight. Breeds include Finewool, Finewool Cross, Southdown, Dorper, and Medium Wool. Lambs will be classified at time of check in. Decisions of the classifier are final. The show superintendent will determine the number of classes based on total number of entries. The show superintendent has the authority to make the final decision on where to break classes based on weight.
7. Medium Wool Division classes will be divided into weight divisions as equally as possible. The show superintendent will determine the number of divisions, with a minimum of three (2).
NEW 2023
8. Breeds with less than five (5) animals will be combined as follows:
 - e. Finewool to Finewool Cross
 - f. Finewool Cross to Medium Wool
 - g. Southdown to Medium Wool
 - h. Dorper to Medium WoolNEW 2023
9. CHECK-IN: Exhibitors must check-in with pre-distributed weight cards including validation tag number, weight, and declared breed. Check-in must be completed by deadline on check-in day or be subject to disqualification. Upon completion of check-in, exhibitors will receive show number for each animal checked in. Once an exhibitor has officially checked-in, the entry is final; no further changes can be made.
10. SHOW WEIGHTS: Exhibitors will turn in the official show weight for their lamb at check-in. The minimum show weight is 95 pounds (with the exception of Southdowns and Dorpers, which must weigh a minimum of 85 pounds)
NEW 2023
11. WEIGH BACK: Any sheep weighing more than 5 pounds of the final declared weight will be disqualified. Sheep weighing less than 5 pounds than the official turn-in weight will be disqualified, The MCJLS Board reserves the right to weigh back any animal.
NEW 2023
12. Lambs will be classified at time of turning in cards, medium wool lambs will just turn in cards by deadline
13. All lambs must be slick shorn and of uniform length above the knee and hock joints. Animals must be clipped prior to check in.

14. Blankets, socks, and muzzles must be removed from animal before classification.
15. All sexually intact sheep (ewes) must have a scrapie tag according to current Texas Animal Health Commission Regulations. A Texas Animal Health Commission Scrapie Tag must be in place before the official county show weigh-in/sift. Any sexually intact sheep (ewes) that are not tagged with a TAHC scrapie tag will not be eligible for show.
16. Show order will be:
 - Southdowns
 - Dorper
 - Finewools
 - Finewool Cross
 - Medium Wools
17. Lamb showmanship classes will follow the market show. Showmanship will be divided into junior, intermediate, and senior divisions. Junior division will consist of exhibitors in grades 3-5. Intermediate division will consist of exhibitors in grades 6-8. Senior division will consist of exhibitors in grades 9-12.

1st – 10th place will receive a ribbon.

Breed Champions, Reserve Breed Champions, Grand Champion and Reserve Grand Champion will receive additional awards.

Showmanship winners will receive a belt buckle and runner-up will receive a plaque.

NEW 2023

Lamb Breed Classification Guidelines

A collaboration by the Texas County Agricultural Agents Association, Agriculture Teachers Association of Texas, TCAAA Animal Industries Committee, Texas FFA Major Livestock Show Advisory Committee, Texas FFA, and Texas 4-H

Please keep in mind, registration papers, breeder affidavits, or other paperwork is not considered in the classification process. Eligibility for the class is determined only by visual appraisal, as evaluated by classifiers appointed by show management.

CLASSIFICATION TERMS:

Acceptable: Characteristics that represent the breed.

Discriminatory: Characteristics that are not reason for absolute disqualification but in combination with other discriminatory visual characteristics could lead to removal from a breed division.

Absolute Disqualifications: Unfavorable visual characteristics resulting in removal from a breed division.

Scur: Horn growth that is not completely attached to the skull.

Birthmark: Dark pigmented skin with dark fiber present within the margins of the pigmentation.

FINEWOOL

Acceptable Breed Characteristics

1. Rambouillet, Delaine, Debouillet, or a cross between these breeds.
2. Silky, white face.
3. Silky ears, medium to moderate in length.
4. Soft pelt.
5. Yellow to white hooves (neutral).
6. Black pads on hooves and black dew claws.
7. Minimal amount of black streaking in the hooves. Less than 1/8 of cumulative hoof surface.
8. Nose should be neutral to pink in color.
9. May be polled or horned. Horns must be indicative of acceptable Finewool breeds.

Discriminatory Breed Characteristics

1. Moderate amounts of brown or black spots in the skin and/or wool.
2. Moderate freckling or pigmented skin (brown or black) on the ears, eyes, nose, and lips.
3. Black eyelashes.
4. Excessive black streaking in hooves more than 1/8 cumulative of hoof surface.
5. Birthmarks.

Absolute Disqualifications

1. Excessively coarse britch and/or harsh pelt.
2. Excessive coarse, chalky, white hair on the face, in the flanks, and/or down the front and/or rear legs.
3. Excessive brown or black spots in the skin and/or wool.
4. Excessive freckling or pigmented skin (brown or black) on the ears, eyes, nose and lips.
5. Brown or black spots in hairline above the hooves to the dew claw.
6. Solid black hooves.
7. Black lambs.
8. Surgical alterations other than re-docking.
9. Steep hip or tendency to show callipyge gene.
10. Head, ear and/or horn shape non-typical to the Finewool breeds (Rambouillet, Delaine, Debouillet, or a cross between these breeds).

FINEWOOL CROSS:

Acceptable Breed Characteristics

1. Must be a cross with evidence of at least 50% Finewool breeding and the remaining percentage exhibiting predominance of ONLY Hampshire and/or Suffolk breeding.
2. Soft pelt which is characteristic of ½ blood wool (60's-62's spinning count).
3. Face and ears should be soft and silky.
4. Spotting and/or brown face and ears.
5. Moderate spotting and/or brown legs not extending above the rear flank and fore flank.
6. Wool must be present below the hocks on the rear legs; wool below the knees on the front legs is not necessary.
7. Reddish, rust colored legs are acceptable.
8. White-faced or ring-eyed crosses are acceptable if pelt is acceptable – as long as no discriminatory characteristics are present.
9. Birthmarks.
10. Scurs and/or horns are acceptable. Horns must be indicative of acceptable Finewool breeds.

Discriminatory Breed Characteristics

1. Excessive black spotting in the skin above the knees and hocks.
2. Moderate black or chocolate brown color on face, ears and legs (including wool).
3. Moderately coarse britch and/or harsh pelt.
4. Moderately coarse, chalky, white hair on the face, in the flanks, and/or down the front and/or rear legs.

Absolute Disqualification

1. Excessive black or dark chocolate brown color on face, ears, and legs (including wool).
2. Excessively coarse britch and/or harsh pelt.
3. Excessive coarse, chalky, white hair on the face, in the flanks, and/or down the front and/or rear legs.
4. Total absence of wool on rear legs.
5. Black lambs.
6. Evidence of other breeds including, but not limited to Dorset and Southdown breed types (head and ear shape of Dorset and/or Southdown).
7. Surgical alterations other than re-docking.
8. Steep hip or tendency to show callipyge gene.

SOUTHDOWN:

Acceptable Breed Characteristics

1. Hair color on muzzle should be mouse-colored, gray to brown and match color on legs and pasterns.
2. Nostril pigmentation may be black to purplish-gray.
3. Head and muzzle should be broad and proportional to body.
4. Head of moderate length and in proportion to body.
5. Ears of moderate length, in proportion to body, and covered with short hair or wool.
6. Black hooves.
7. Slight chalk around eyes.
8. Slight chalk around muzzle.
9. Spots or speckles in the skin only when shorn.

Discriminatory Breed Characteristics

1. Solid white color or dark chocolate color on muzzle.
2. Coarse britch and/or harsh pelt.
3. Predominately pink nose with few black spots.
4. Long, narrow muzzle.
5. Excessive black pigmentation on ears.
6. Excessive ear length not in proportion to head.
7. No hair or wool on ears.
8. Scurs.
9. Absence of wool between scur areas.
10. Striped hooves.
11. Reddish, rust colored hair above hoof to pastern.
12. Black fibers in wool outside of birthmark.
13. Birthmarks.

Absolute Disqualification

1. Speckled face, ears, or legs.
2. Horns.
3. White hooves.
4. Intentional alteration of hair color or skin pigmentation.
5. Total pink pigmentation of nostrils.
6. Black lambs.
7. Surgical alterations other than re-docking.
8. Steep hip or tendency to show callipyge.

DORPER

Acceptable Breed Characteristics

1. Must be a Dorper or White Dorper.
2. Conformation: long, deep, wide body with well sprung ribs and excellent muscling.
3. Color: Dorper – white sheep with black limited to head, neck, and forequarters not below the knee or behind the heart girth; White Dorper – white sheep.
4. Must have at least 1/3 hair primarily on belly, forearm, and britch.
5. 100% hair below the knees and hocks.
6. 100% hair forward of poll.
7. Moderate size ear with no wool covering.
8. Head should be strong, bold with a deep jaw.
9. Polled or small horns or scurs.
10. Spots or speckled pigment in the skin only when shorn.
11. Black spots above the hoof line and below the dewclaw.

Discriminatory Breed Characteristics

1. Tall, leggy, shallow, and/or narrow-bodied lambs.
2. A limited amount of dark fibered spots on body and underline behind heart girth not to exceed a cumulative total of the size of a basketball.
3. A white sheep with brown or red colored speckles in the covering, confined to the head and neck.
4. Tri-colored sheep
5. Excessive wool covering more than 2/3 of body (belly, forearm, and britch).
6. Wool forward of poll.
7. Heavy horns.
8. Long, pendulous ears.
9. Long, narrow muzzle.

Absolute Disqualification

1. All wool or very little evidence of hair on belly, forearm, or britch.
2. Wool below the knees or hocks.
3. Wool on the ears.
4. Excessive amount of dark fibered spots on body and underline behind heart girth exceeding a cumulative total of the size of a basketball.
5. Solid brown, red, rust colored head.
6. Speckling or spots from knee to dewclaw or from hock to dewclaw.
7. Strong breed characteristics of breeds other than Dorper or White Dorper.
8. Surgical alterations other than re-docking.
9. Steep hip or tendency to show callipyge gene.
10. Evidence of color alterations.

MARKET GOAT DIVISION:

Superintendent – Faith Hammermeister

Judge- Shawn Sparks

1. All general rules and regulations apply.
2. All market show and sale rules and regulations apply.
3. All goats exhibited in the MCJLS must be state validated or county validated in the month of October. Exact dates to be determined. Fees for county validation ear tags are due at the time of validation.
4. Goats will be validated in the presence of several officials of the McLennan County Youth Activities Association, Inc., County Extension Agents, Agriculture Science Teachers, etc. All goats will be ear tagged.
5. Wethers and open does are eligible to be shown.
6. Animals will be divided into classes as equally as possible by weight only. The show superintendent will determine the number of classes based on total number of entries. The show superintendent has the authority to make the final decision on where to break classes based on weight.
7. Classes will be divided into weight divisions as equally as possible. The show superintendent will determine the number of divisions, with a minimum of three (3).
8. CHECK-IN: Exhibitors must check-in with pre-distributed weight cards including validation tag number, weight, and declared breed. Check-in must be completed by deadline on check-in day or be subject to disqualification. Upon completion of check-in, exhibitors will receive show number for each animal checked in. Once an exhibitor has officially checked-in, the entry is final; no further changes can be made.
9. SHOW WEIGHTS: Exhibitors will turn in the official show weight for their Goat at check-in. The minimum show weight is 55 pounds
10. WEIGH BACK: Any goat weighing more than 5 pounds of the final declared weight will be disqualified. Goats weighing less than 5 pounds than the official turn-in weight will be disqualified, The MCJLS Board reserves the right to weigh back any animal
11. All goats must be slick shorn and of uniform length above the knee and hock joints. Animals must be clipped prior to check in.
12. All goats must have their horns tipped or be naturally hornless.
13. All sexually intact goats (does) must have a scrapie tag according to current Texas Animal Health Commission Regulations. A Texas Animal Health Commission Scrapie Tag must be in place before the official county show weigh-in/sift. Any sexually intact goats (does) that are not tagged with a TAHC scrapie tag will not be eligible for show.

NEW 2023

NEW 2022

14. Goat showmanship classes will follow the market show. Showmanship will be divided into junior, intermediate, and senior divisions. Junior division will consist of exhibitors in grades 3-5. Intermediate division will consist of exhibitors in grades 6-8. Senior division will consist of exhibitors in grades 9-12.

1st – 10th place will receive a ribbon.

Division Champions, Reserve Division Champions, Grand Champion and Reserve Grand Champion will receive additional awards.

Showmanship winners will receive a belt buckle and runner-up will receive a plaque.

MARKET BROILER DIVISION:

Superintendent – Kevin Wunderlich

Judge-

1. All general rules and regulations apply.
 2. All market show and sale rules and regulations apply.
 3. The birds will be wing banded upon delivery. Each exhibitor must order either twenty-five (25) or fifty (50) birds. Number ordered must be indicated on the Broiler Order Form. All birds ordered must remain under the exhibitor's ownership and be fed and cared for by that exhibitor.
 4. Broiler entries are limited to two pens of 3 broilers per exhibitor.
NOTE: each order (consisting of either 25 or 50 birds) of broilers is considered the same as one animal under family entry rules. When two pens of broilers are entered from the same order, both pens must be entered under the same exhibitor. For more than one exhibitor from the same family to show a pen of broilers, an order of either 25 or 50 birds must be ordered for each exhibitor. Under no circumstances will more than one person be allowed to show a pen of broilers from the same order.
 5. Roosters may be shown.
 6. Two separate entry fees and entry forms will be required if two pens are entered. Broiler order form and payment must accompany order. Birds must be ordered from:
Kevin Wunderlich - Riesel High School
600 E. Frederick
Riesel, TX 76682
 7. Order deadline will be end of September or first of October. Exact date will be announced to ASTs and CEAs. Orders WILL NOT be accepted after deadline. Cost of birds will be announced to ASTs and CEAs. Make checks payable to Riesel FFA. Birds will come 25 per box. If an exhibitor orders 50 birds, he/she will receive two (2) boxes of 25.
 - Chicks must be picked up in December. An exact date and pick up location will be announced to Agriculture Science Teachers and County Extension Agents.
 8. Wing bands will be checked at the show after birds are judged. Wing band numbers MUST match those assigned to the exhibitor. Should wing band numbers not match those assigned to exhibitor, that pen will be disqualified. Birds with missing wing bands, for any reason, will not be allowed to show.
 9. The Grand Champion and Reserve Grand Champion broilers will have wing bands removed before leaving the show ring.
 10. Sick or diseased broilers will not be allowed to show and must be removed.
 11. Coops will not be provided.
- 1st – 20th place will receive a ribbon.
Grand Champion and Reserve Grand Champion will receive additional awards

MARKET TURKEY DIVISION:

Superintendent – Kevin Wunderlich

Judge-

1. All general rules and regulations apply.
2. All market show and sale rules and regulations apply.
3. All turkeys that will be shown at the McLennan County Junior Livestock Show will come from the Houston Livestock Show / San Antonio Livestock Show / Star of Texas hatch. THEREFORE, there are two (2) possible ways to secure birds for the county show:
County Show ONLY birds
County, San Antonio, Houston, and Star Show birds.

A. County Show ONLY Turkeys.

- 1) All birds will be ordered through Riesel High School. These birds will be from the San Antonio/Houston/Star hatch BUT MAY ONLY be shown at the McLennan County Junior Livestock Show. The birds will be wing banded upon delivery. Each exhibitor can order in multiples of 10 birds up to 50. Birds will be straight run.
- 2) Each exhibitor may show two birds – 2 toms, or 2 hens, or 1 tom and 1 hen. Toms will show against toms and hens will show against hens.
- 3) County Show ONLY birds must be ordered from:
Kevin Wunderlich
Riesel High School 600
E. Frederick
Riesel, TX 76682
- 4) Order deadline for COUNTY ONLY birds will be late May or early June. Exact dates will be announced to ASTs and CEAs. Orders WILL NOT be accepted after the deadline. Cost of birds will be announced to ASTs and CEAs. Make checks payable to Riesel FFA. Pick-up date will be in October at the McLennan County Extension Office. An exact date will be announced to Agriculture Science Teachers and County Extension Agents.

B. County Show, San Antonio, Houston, and Star Turkeys.

- 1) Exhibitors wanting to show turkeys at the county show and have the option of showing at San Antonio, Houston, and/or Star must order their turkeys through their respective FFA chapter if showing under FFA or through the county extension agent if showing under 4H. See your FFA advisor or county extension agent for entry details. Information can also be found online at <http://gallus.tamu.edu> . Click on Youth Programs under Extension. Pick-up date is in October. Please be aware that only agriculture science teachers or county extension agents may place orders.

- 2) Each exhibitor may show two birds at county – 2 toms, or 2 hens, or 1 tom and 1 hen. Toms will show against toms and hens will show against hens.
- 3) Once turkeys are picked up, a copy of the print out received at the pick-up at Texas A&M University listing the band numbers assigned to the exhibitor should be mailed by October 31 to:
Kevin Wunderlich
Riesel High School
600 E. Frederick
Riesel, TX 76682
4. All birds ordered must remain under the exhibitor's ownership and be fed and cared for by that exhibitor.
5. Wing band numbers will be checked upon arrival at the show. Wing band numbers MUST match those assigned to the exhibitor. Should wing band numbers not match those assigned to exhibitor, that bird will be disqualified. Birds with missing wing bands, for any reason, will not be allowed to show.
6. The Grand Champion and Reserve Grand Champion turkeys will have wing bands removed before leaving the show ring.
7. Sick or diseased turkeys will not be allowed to show and must be removed.
8. Coops will NOT be provided.

1st – 20th place will receive a ribbon.

Grand Champion and Reserve Grand Champion will receive additional awards.

RABBIT DIVISION:

UPDATED 2022

Superintendent – Sean Sammons & Shanna Denson

1. All general rules and regulations apply.
2. All market show and sale rules and regulations apply.
3. Rabbits must be the bona fide property of the exhibitor as of validation, and must be continuously fed and cared for by the exhibitor as a project under the supervision of an AST and/or CEA. In case of disqualification under this rule, other exhibitors shall, if qualified, be moved up on the list of winners.
4. All meat pens must be validated. Meat pens must be in exhibitor's possession by the date of validation. Validation will be in the month of January. Exact date to be determined. A cost of fifty (.50) cents per head will be charged for validation.
5. Each exhibitor may enter up to, but not exceeding three (3) meat pens.
 - a. A meat pen consists of three fryers of the same breed and variety, but does not all have to consist of the same sex.
 - b. Rabbits will be weighed on the official show scales, and must weigh at least 3lbs 8oz (3 ½ lbs.), but not exceed more than 5lbs 8oz (5 ½ lbs.) at weigh-in.
 - c. Rabbits must not be over 70 days old at the time of the show.
 - d. Elimination of a meat pen disqualifies all animals within the pen, and no substitutions may be made.
 - e. Meat pens will be eliminated if:
 - i. More than one breed or variety is in the same pen.
 - ii. Rabbit has defects such as blindness in either or both eyes, missing toes, missing or broken toenail, bobbed or broken tail.
 - iii. Rabbit has any sickness or disease such as cysts, abscesses, ruptures, tumors, snuffles, matted eyes, mange, mites, fleas, malocclusion, or vent disease.
6. Rabbits will be judged in accordance with American Rabbit Breeder's Association's (ARBA) Standard and Guide for Judging Meat Classes. Judges will additionally refer to the appropriate Breed Standards, as they deem necessary.
 - a. No oils, polishes, powders, or other products may be used which would cosmetically alter the rabbits' naturally groomed appearance.
 - b. Four main factors of judging:
 - i. Meat Type (40%) – Rabbits should be compact, short, and well filled out with rounded, solid flesh. Hindquarters are most important (thickness of), then loin (wide, deep loins), and finally shoulders (e=well-developed).
 - ii. Condition (30%) – all three rabbits in the pen should be in prime condition
 - iii. Uniformity (20%) – pen should reflect uniformity of weight, size, appearance, condition, meat type, and fur.
 - iv. Fur (10%) – should conform to breed standards and be uniform on all three animals
7. Exhibitors must have suitable carrying cages for their rabbits to and from show and validation, as well as while awaiting judging and weigh-in. Cages/carriers must be wire bottomed with a solid bottom to prevent the spread of urine and feces. Boxes, dog crates, pet taxis or crates are not acceptable or safe for transporting rabbits.
8. Exhibitors who have more than one meat pen place in the top ten and/or make sale, may only receive the highest placing trophy. The only exception is if the exhibitor has both the Grand and Reserve Champion pens, then the exhibitor is entitled to receive both trophies.

9. Awards:
 - a. Top ??% of total entries will make sale. Only one pen per exhibitor can be sold.
 - b. Grand and Reserve Champions will receive trophies and jackets.
 - c. Top 10 meat pens will receive trophies and donor awards.
 - d. 11th – 20th will receive ribbons.

Breeder Rabbit Division:

Updated
2023

10. All general rules and regulations apply.
11. Rabbits must be the bona fide property of the exhibitor as of validation, and must be continuously fed and cared for by the exhibitor as a project under the supervision of an AST and/or CEA. In case of disqualification under this rule, other exhibitors shall, if qualified, be moved up on the list of winners.
12. Each exhibitor may enter and show up to, but not exceeding three (3) breeder rabbits.
 - a. Breeder rabbits do not require validation, Tattoo and breed must be listed at time of entry and will be checked at time of show.
 - b. Two entries per class per exhibitor will be allowed in the Breeding Rabbit classes
13. Breeding Rabbits entered in the rabbit division must be owned by exhibitor on or before December 10, 2022.
14. Animals will be divided into classes by breed and gender. Breeds include Californian, New Zealand, Holland Lop, Polish, Mini Rex, Mini Lop, Netherland Dwarf, Other Breed-4 and Other Breed-6
15. Any breed with five(5) or more entries will have its own breed division. Any breed not meeting the five head minimum will be grouped in Other Breed-4 or Other Breed-6 division (see chart for specific breed list).
16. Breeds not classified as otherwise noted in catalog will be classified as either Other Breeds 4-class or Other Breeds 6- class according to the ARBA guidelines.
17. Only ARBA recognized breeds and varieties maybe shown in the Breeding Rabbit Division (see chart on pg. 36)
18. Breeder rabbits will not be sold.
19. Awards:
 - a. Grand and Reserve Champions will receive trophies and donor awards.
 - b. Top 10 meat pens will receive trophies and donor awards.
 - c. 11th – 20th will receive ribbons.

Showmanship:

20. Rabbits used for showmanship must be owned by exhibitor and entered in the show.
21. Showmanship consists of a hands on demonstration of rabbit knowledge to a qualified showmanship judge. Participants must:
 - a. Demonstrate their ability to handle and care for their rabbits
 - b. General knowledge of rabbits and rabbit anatomy
 - c. Ratings will be compiled using the ARBA Rabbit Showmanship score card.
22. Showmanship classes are as follows:
 - d. Junior Division – exhibitors in 3rd – 5th grades
 - e. Intermediate Division – exhibitors in 6th – 8th grades
 - f. Senior Division – exhibitors in 9th – 12th grades
23. Awards:

Division winners and runners up will receive awards
24. Overall High point 4H and FFA members will be awarded trophies

ARBA RECOGNIZED BREEDS Chart:

<u>BREED</u>	<u>Class</u>	<u>Breed</u>	<u>Class</u>	<u>Breed</u>	<u>Class</u>
American	6 Class	American Chinchilla	6 Class	Giant Chinchilla	6 Class
Harlequin	4 Class	American Fuzzy Lop	4 Class	Havana	4 Class
American Sable	4 Class	Himalayan	4 Class	Holland Lop	4 Class
Argente Brun	6 Class	Jersey Wooly	4 Class	Belgina Hare	4 Class
Lilac	4 Class	Beveren	6 Class	Lionhead	4 Class
Blanc De Hotot	6 Class	Mini Lop	4 Class	Britannia Petite	4 Class
Mini Rex	4 Class	Californian	6 Class	Mini Satin	4 Class
Netherland Dwarf	4 Class	Champagne d'Argent	6 Class	New Zealand	6 Class
Checkered Giant	6 Class	Palomino	6 Class	Cinnamon	6 Class
Polish	4 Class	Crème D'Argent	6 Class	Rex	4 Class
Dutch	4 Class	Rhineland	4 Class	Dward Hotot	4 Class
Satin Angora	4 Class	English Angora	4 Class	Satin	6 Class
English Lop	6 Class	Silver	4 Class	English Spot	4 Class
Silver Fox	6 Class	Flemish Giant	4 Class	Silver Marten	4 Class
Florida White	4 Class	Standard Chinchilla	4 Class	French Angora	4 Class
Tan	4 Class	French Lop	6 Class		

BEEF HEIFER DIVISION:

Superintendent – Tina Gardener

1. All general rules and regulations apply.
2. Ownership deadline is November 1. Registration papers will be required. No females born before September 1, 2020 can be entered.
3. All heifers must be state validated in McLennan County.
4. Entries are due December 10. At time of entry, an exhibitor must submit registration papers for any possible substitution heifers.
5. Any breed with five(5) or more entries will have its own breed division. Classes will be broken by age and numbers. Any breed not meeting the three head minimum will be grouped in other American, British or European Classes.

6. Heifer Class Breaks

Updated
2023

- a. April 2022- After
 - b. January 1, 2022- March 31, 2022
 - c. October 1, 2021- December 31, 2021
 - d. July 1, 2021- September 30, 2021
 - e. April 1, 2021- June 30, 2021
 - f. January 1, 2021- March 31, 2021
 - g. September 1, 2020- December 31, 2020
7. No crossbred heifer classes.
 8. No Dairy classes.
 9. Show committee may break classes equally based on total number entered.
 10. All cattle must be halter broken. Any animal that gets away from an exhibitor three (3) times will be disqualified and removed from the show ring. If an animal is disqualified after having been placed, the animals placing below will be moved up to fill the vacated position.
 11. Show order will be:
 - a. **Americans**
Individual breeds that make in alphabetical order
Other Americans
American Champion Drive
 - b. **British**
Individual breeds that make in alphabetical order
Other British
British Champion Drive
 - c. **European**
Individual breeds that make in alphabetical order
Other European
European Champion Drive
 - d. **Overall Champion Drive**

12. Heifer showmanship classes will follow the show. Showmanship will be divided into junior, intermediate, and senior divisions. Junior division will consist of exhibitors in grades 3-5. Intermediate division will consist of exhibitors in grades 6-8. Senior division will consist of exhibitors in grades 9-12.

1st – 10th place will receive a ribbon.

Breed Champions, Reserve Breed Champions, Supreme Grand Champion and Reserve Grand Champion will receive additional awards.

Showmanship winners will receive a belt buckle and runner-up will receive a plaque.

Agricultural Mechanics DIVISION:

Superintendent – Charles Prause

Show Details:

Entry Deadline: December 10th, 2022

Arrival: Monday February 6, 2023, Time: TBD

Judging of Projects: Monday February 6, 2023 – Time: TBD

Results & Awards: Immediately following completion of judging

Release of Projects: All project must be removed from the premises by Thursday evening February 9, 2023

Division General Rules:

1. Entry Fee: The entry fee for each project will be \$25.00 per project.
2. Individual/Group Entries: Projects may be individually, or group constructed. Entries must be made in the name of the FFA Chapter or 4-H Club. Entries must include only the name(s) of those who participated in the planning and construction of the project. Group projects are comprised of two (2) or a maximum of six (6) students.
3. No exhibitor may be involved in the construction of more than 3 projects, whether group or individual. This does not limit the number of projects a chapter or club may enter.
4. Eligible exhibitors are high school Agricultural Science Programs and 4-H members of McLennan County School Districts.
5. FFA and 4-H members must have constructed projects as a part of their agricultural mechanics instruction in agricultural science, or as a part of their supervised work experience program. Projects must be designed and constructed under the direct supervision and guidance of the CEA/AST.
6. Placement of the project will be at the discretion of show officials. Display space under shelter is NOT guaranteed. Off-Loading equipment is not guaranteed. Projects may be exhibited on trailer used for hauling.
7. A project may be exhibited only one time at the McLennan County Jr. Agricultural Mechanics Project Show and must have been constructed within one calendar year of the exhibition date.
8. All projects are to be identified with exhibitor number. Chapter/Club identification will be permitted.
9. Any equipment, trailers etc. that will travel on public roads and highways must meet all Federal and State DOT Standards. Current Federal DOT Inspection stickers will be honored. Anything that does not have a current DOT Inspection sticker or that does not meet DOT Regulations will be subject to the judge's discretion.
10. All projects must be complete including finish.

11. Documentation and Research: Documentation is considered a research portfolio and should not be constructed as a scrapbook.
 - Documentation and research must include the following components:
 - a. Working Drawing – Must include a complete original (exhibitor drawn) plan(s) of the project constructed.
 - b. Bill of Materials (BOM) – Must include a list or description of material used to construct project. Total cost of construction must be included.
 - c. Photographs – Show work in progress and should illustrate proper safety procedures including clothing, eye, and face shields, etc. Photographs should be sequenced in the order of constructing the project.

12. It is recommended that one member of the FFA Chapter/4-H Club be present at the time of judging to answer questions while project is being judged. Projects will be judged on the following criteria.

Workmanship.....	25 points
Sound Structural Design & Balance.....	15 points
Degree of Difficulty.....	10 points
Practicality.....	10 points
Finish.....	10 points
Plans, Bill of Materials, Photographs.....	10 points
Student Knowledge.....	20 points

13. **Late Entries – All entries are due December 10th. Entry forms received after December 10th will be charged a late fee of \$60.00 per entry in addition to the original fee(s). Absolutely no entry forms will be accepted after December 26th. The entry fee(s) and late fee(s) must be submitted with entry form to the participant’s CEA or AST.**

Divisions & Classes Section:

Livestock Equipment Division:

1. Gates & Livestock Panels
2. Squeeze Chutes, restraining equipment, crowding, or working pens
3. Trim chutes, blocking stands, livestock crates and head gates (**Includes Electrical Livestock Equipment**)
4. Feeders – includes self and creep feeders – feeders/water troughs built from wood, steel, or concrete.

Farm Machinery Division:

5. Hay Handling Equipment – includes hay spears, single/double bale hay trailers, bale pickup equipment, etc.
6. Spraying Equipment – herbicides, insecticides, and other chemicals
7. Mounted or pull type tractor equipment & machinery
8. Hydraulic Equipment
9. Shop Equipment (**Includes Electrical Shop Equipment**)
10. Truck Accessories and Equipment

Outdoor Cooking Division:

11. Non-towable outdoor cooking devices – Fire Pits (Open Top Only)
(If Fire Pit has a grill it will be moved to Class 12).
12. Non-towable outdoor cooking devices – BBQ Pit Smokers/Grill, Fire Pit w/ Grill Top, Fish Cookers.
13. Tow-able outdoor cooking equipment (with lug bolts) – BBQ pits, smokers, grills

Home Convenience Division:

- 14. Small Indoor furniture – **(Less than 12 square feet) (Includes Home Electrical Equipment)**
- 15. Large Indoor furniture – **(More than 12 square feet) (Includes Home Electrical Equipment)**
- 16. Lawn Furniture – **(Swings, benches, chairs, yard tables)**
- 17. Yard Convenience – **(Picnic Tables, Planters, Wood racks, dog houses)**
- 18. Other Yard Conveniences – **(Potting Sheds, Storage Bldgs., Greenhouses, Playground Equipment, Gazebos, etc.)**

Wildlife Division:

- 20. Feeding and Watering Equipment
- 21. Traps and Capture Devices, Processing and Other Equipment **{Includes Electrical Wildlife Equipment}**
- 22. Stands, Blinds

Trailer Division:

- 23. 12’ & under bumper pull utility trailers
- 24. Over 12’ bumper pull utility trailers
- 25. Stock trailers (gooseneck & bumper bull)
- 26. Gooseneck and Flatbed/Implement Trailers – all lengths
- 27. Other trailers – welder trailers, etc.

Horse Drawn Equipment Restoration:

- 28. Transportation
- 29. Farm & Ranch Equipment (plows, mowing machines, etc.)

Tractor Restoration Division:

- 30. Models from 1960 and earlier
- 31. Models from 1961 to 1995

***** The restoration division must have begun upon the completion of the 2022 McLennan County Jr. Livestock Show.**

Judging System for Tractor Division:

- a. Mechanical..... 50 points
- b. Aesthetics..... 20 points
- c. Originality..... 10 points
- d. Safety Equipment..... 10 points
- e. Documentation..... 10 points
- TOTAL..... 100 points

- **Mechanical** – will include the restoration of engine, transmission, final drive, fuel system, cooling system, cranking, or starting system, charging system, hydraulic system, steering system, etc.
- **Aesthetics** – will include overall appearance of the tractor. This includes workmanship and finish. Items to be considered include but are not limited to metal preparation, completeness of sheet metal, paint and finish, detail and completeness of components such as wheels, tires, steering wheels, seats, decals, instrument panels, wiring harness, etc.

- **Originality**– will include paint color, fasteners, electrical systems, fuel systems, exhaust systems, mechanical systems, original unaltered serial plates, etc.
- **Safety Equipment**– will include all equipment that was original to the tractor. It also includes the provision of drip pans containing floor absorbent to collect any liquids that may drip from the tractor during display. Fuel shutoff valves under all fuel tanks must be functional and tractors are to be exhibited with the valves closed. Tractor engines are to be started and run only at the request of judges or show officials. An ABC fire extinguisher must be provided with each tractor.
- **Documentation** – must be typed or computer generated and is to include a one-page description of the overall restoration project, and expense report identifying all cost of restoration, photos showing before, during and after restoration that shows safe working environment, and a complete description of all mechanical work performed. All documentation must be displayed in a three-ring binder⁴, divided, and sequenced with a table of contents and page numbers.

Awards Section:

- **Class Winners Awards:** 1st, 2nd, & 3rd places of each class will be announced.
- **Division Champion Awards:** 1st & 2nd place projects of each class will be judged for Division Champion and Reserve Division Champion. The winning projects will be awarded.
- **Overall, Champion Awards:** Division Champions and Reserve Division Champions will be judged for Overall Grand Champion and Overall Reserve Grand Champion of Show.
 - Overall Grand Champion and Overall Reserve Grand Champion of show will each be awarded a banner.
- **Sweepstakes Awards:** Awards will be awarded to the FFA Chapter/4-H Club that accumulates the most points based on the number of entries with each placing and Division Champions and Reserve Division Champions.
 - 1st, 2nd & 3rd places will receive a banner.
- **Showmanship Award:** Presented to school, club or individual selected as having presented the best public image. Judging of showmanship will take place from 8:00 a.m. until the completion of judging of all projects. Individual Champion Showmanship and Reserve Champion Showmanship banners will be awarded. Group Champion Showmanship and Reserve Champion Showmanship will be awarded.
 - **Major considerations in the selection of showmanship winners are listed:**
 - a) Appropriate display and presentation of projects.
 - b) Appropriate display of project plans and photographs.
 - c) Housekeeping around project display.
 - d) Appropriate dress.
 - e) Conducive attitude and participation of exhibitors.

Ag Mechanics Market Place Competition Division

Superintendent – Charles Prause

NEW 2023

Show Details:

Entry Deadline: December 10th, 2022

Arrival: Monday February 6, 2023, Time: TBD

Judging of Projects: Tuesday February 7, 2023 – 8:00 a.m.

Results & Awards: Immediately following completion of judging

Sale of Champions: Friday, February 10th, 2023 - 6:00 p.m.

2023 Project Theme :Picnic Table

Release of Projects: All project must be removed from the premises by Thursday evening February 9, 2023

Division General Rules:

1. **Entry Fee:** The entry fee for each project is \$50.00. Entries must be submitted on official entry form by the deadline date of December 10, 2022. **NO LATE ENTRIES!**
2. **Eligible Entries:** The McLennan County Junior Livestock Show makes available to County Extension Agents and Ag Science Teachers of 4-H Clubs and FFA Chapters the opportunity to enter one (1) one Ag Mechanic Marketplace project. Entries must be submitted in the name of the 4-H Club or FFA Chapter. Contestants must be bona fide members of the 4-H Club and/or FFA Chapter. They must be enrolled in and attending public, private or home school elementary or secondary schools of McLennan County at the time of the event.
3. **Number of Entries:** Each club or chapter may enter a maximum of one (1) project.
4. **Projects:** Projects must have been constructed by FFA or 4-H members. Projects must be designed and constructed under the direct supervision of the CEA or AST. Projects are not eligible for the McLennan County Junior Livestock Ag Mechanic Show.
5. **Theme:** Each year a project theme will be chosen for 4-H Clubs and FFA Chapters to follow. For example, the project theme for 2023 will be Picnic Tables, project theme for 2024 will be fire pits. The theme will be chosen each year by the superintendent of the show. The purpose of this theme is to allow all contestants to compete on the same playing field.
6. **Construction Date:** A project may be exhibited only one time at the McLennan County Ag Mechanic Marketplace Show and must have been completed within one calendar year of the exhibition date.
7. **Teams:** Teams will be comprised of two (2) or a maximum of (4) four students. Teams are encouraged to be creative, innovative, but maintain the marketability of their project. Students competing in the Marketplace Show are still eligible to compete in the Ag Mechanic Project Show with a different project.
8. **Documentation:** Each marketplace entry must have the following documentation.
 - a. Product Summary and 5 High Quality Photographs.
 - b. Marketing Flyer/Materials

9. Auction: Only the Grand Champion Overall and Reserve Grand Champion Overall will be selected to sale in the Sale of Champions Auction on Friday, February 10th, 2023.
 Depending on the number of project entries confirmed to show, additional sale slots will be determined by the Sales Committee. NO Silent Auction Bid Sheets will be allowed during the show and sale. The "Market Value" listed on Product Summary and Marketing Materials will be honored as the minimum/starting bid.
10. Exhibit Space: Projects will be displayed at the discretion of show officials. Display space under shelter is not guaranteed.
11. Project Completeness: All projects must be complete including finish. Any item necessary for use of the project must be a part of the project.
12. Teams are encouraged to be creative, innovative, but maintain the marketability of their project.
13. Awards: Depending on the number of entries confirmed at the show, Grand Champion Overall, Reserve Grand Champion Overall and 3rd place overall will receive a banner.
14. Release of Marketplace Projects: All Ag Mechanic Marketplace projects must be removed from the premises by Thursday evening February 9, 2023, except for the Grand Champion Overall, Reserve Grand Champion Overall and 3rd Place Overall.

NOTE: At least one team member is highly encouraged to be available to answer questions from the public or show officials including judges at all times. Teams are highly encouraged to have proper materials to market their project to any patrons or show officials at all times.

Contest Format

Project Workmanship/Quality.....	50%
Team Sales Presentation.....	35%
Product Summary/Marketing Materials.....	15%

Team Sales Presentation – 35%

1. The Product Summary and Marketing Materials will be use in the team sales presentation to “sell” the project entered to a panel of judges.
2. The judges will act as a real customer which may include not buying the project. Participants will have to establish rapport with the judges and ask probing questions to ensure they meet the judge’s needs.
3. The judges will utilize the Product Summary to prepare for the presentation conversation.
4. Teams may use only the Product Summary and Marketing Flyer during the Team Sales Presentation. No slide shows, electronic presentations, videos, etc. may be used.
5. All members of the team must be present, and all must participate.
6. Teams should present themselves with a professional appearance.
7. Teamwork and involvement of team members will be judged during the event.
8. Teams should plan to accomplish the following tasks during the sales presentation.
 - a. Introduce themselves to the customer in the opening of the presentation.
 - b. Introduce the product to the customer.
 - c. Point out the features of the product.
 - d. Explain how the product will benefit the customer. Ask for the customers reaction to the product.
 - e. The customer will object to some element of the sales presentation. Teams should try to overcome the objection (price, size, color, etc.) with a positive solution to the customers objection.
 - f. The customer will also give the teams a chance to close the sale during the presentation. Ask for the business and be prepared to finalize the order.

Product Summary/Marketing Materials – 15%

1. Product Summary: Each team will develop a product summary to be submitted to the judges on day of competition.
2. Product Summary Should Include the Following:
 - a. Club/Chapter/School Name
 - b. Product to be sold
 - c. Statement of marketing situation
 1. Who is the customer?
 2. Why would the customer want the product?
 3. Who are the major competitors selling a similar product?
 - d. Features of the product
 - e. Benefits of the product for the customer
 - f. Market Value – This will also be used as the minimum bid for the project.
 - g. Product Specifications: weight, size dimensions, maintenance requirements, weight ratings, etc.
 - h. As a supplement to the Product Summary the team should include at least 3 to 5 photographs of the completed project to be used for the promotion of the project.

3. Marketing Flyer: Each team will develop an 8.5" x 11" one or two-sided flyer promoting and detailing the product. Flyer should be designed to be utilized as an advertisement for and an overview of the product to be shared with customers.

The Marketing Flyer will be turned in upon arrival at check in and teams should supply judges up to 5 copies during the Sales Presentation.

OFFICERS AND BOARD MEMBERS FOR THE 2023 SHOW YEAR

PRESIDENT: ANTHONY MEURER
FIRST VICE PRESIDENT: FAITH HAMMERMEISTER
SECOND VICE PRESIDENT: BRIAN BROOKSHIRE
SECRETARY: KEVIN GIBBS
TREASURER: CATHY WOOD

Members with Terms Expiring in 2023:

Mike Alton	Kevin Lilley	Steve Lewis
Anthony Meurer	Kevin Wunderlich	Randy Solberg
Tina Gardner	Alex Mynarcik	Misty Groschke

Members with Terms Expiring in 2024:

Kevin Gibbs	Lisa Miller	Cathy Wood
Rick Hines	Chase Sligh	Jaye Meurer
David Wren	Brian Brookshire	

Members with Terms Expiring in 2025:

Trent DeLeon	Craig Maulsby	Jody Wood
Shanna Denson	Clarence Majewski	Faith Hammermeister
Kevin Goates	Matt Richardson	Dwain Ellis

McLennan County Jr. Livestock Show 2023 Schedule

	Monday Feb. 6 th	Tuesday Feb. 7 th	Wednesday Feb 8 th	Thursday Feb. 9 th	Friday Feb. 10 th
5:00 a.m.		Barn opens	Barn opens	Barn opens	
6:00 a.m.					
7:00 a.m.			Rabbit Weigh in & check in	Poultry check in	
8:00 a.m.		Ag Mech Market Place Judging	Rabbit Show	Poultry Show	Livestock Judging Reg.
9:00 a.m.			Heifer Check In		Livestock Judging Contest
10:00 a.m.		Market Goat Show	Market Steer Show		
11:00 a.m.					
12:00 p.m.		Steer & Heifer Arrival	Swine Arrival	Market Swine Show	
1:00 p.m.		Market Sheep Show	Heifer Show		
2:00 p.m.	Sheep & Goat Arrival				
3:00 p.m.					
4:00 p.m.					
5:00 p.m.					
6:00 p.m.	Sheep Classification 6pm MW Sheep Card due 4-6pm Goat Weight Cards Due 4-6pm	Steer Weight Cards Due (4-6pm)	Swine Weight Cards Due (4-6pm)		Sale of Champions (6:30 pm)
7:00 p.m.					
11:30 p.m.	Barns Close	Barns Close	Barns Close	Barns Close	

- Ag Mechanics will move in on Monday February 6th, time is TBD
- Ag Mechanics show will be Monday February 6th, time is TBD