



# Lubbock County 4-H News



Lubbock County Extension Office • (806) 775-1740 • Fax (806) 775-1758 • <http://lubbock.agrilife.org/>  
 Physical Address: 916 Main, Suite 401 • Lubbock, TX 79401 • Mailing Address: P.O. Box 10536 • Lubbock TX 79408

November - December, 2018

## 4-H MEMBERSHIP

If you have not completed your 4-H membership on 4-H Connect it is time to do so. An enrollment fee of \$25 per year, per member (official 4-H age 9 or in the 3<sup>rd</sup> grade through age 18) is now required for participation in any 4-H meeting, contest or activity. To join, please visit the county website <http://lubbock.agrilife.org/>; and click on enrollment/4-H Connect. If you have previously enrolled, please use your past profile.

**This will be your last 4-H Newsletter until the 4-H enrollment is completed. Please contact Ronda if you have any questions.**



## 2018 CHILDREN'S 4-H BARNYARD

The Lubbock County Extension Staff would like to say "THANKS" to everyone who assisted with the 2017 Children's 4-H Barnyard at the South Plains Fair.

We also want to thank our sponsors for this year: the South Plains Fair and Purina Mills - for providing the feed for the animals.

And finally, we want to thank each of the families and individuals who provided animals and exhibits for the Barnyard. Without these individuals and their animals, we would not be able to operate. Thank you to: the Verkamp's, the Townsend Agency, the Jackson's, Caprock BeeKeepers Association, the Kendrick's, the Robinson's, the DeSautel's and Billy Scott family.

Parents and 4-H'ers:

If you have questions about the Lubbock County 4-H program, need assistance or need more information about an event, activity or project, please give us a call. We're here to serve you, but you must let us know when you need assistance or have special interest areas.

## IN THIS ISSUE

### Page 1

4-H Membership  
 2018 Children's 4-H Barnyard

### Page 2

4-H Foundation Scholarship Training  
 Parent-Leaders Association  
 Texas 4-H Center Website  
 Are You a Member?  
 Teen Council  
 Lubbock County 4-H On-Line  
 Club Managers  
 Countywide 4-H Christmas Activity

### Page 3

One Day 4-H Rescheduled  
 Christmas Community Service at Bayer Ag Museum  
 4-H Adult & Youth Advisory Board  
 School Excuse Policy  
 Annual Pet Food Drive for Meals on Wheels  
 4-H Recordbooks

### Page 4

4-H Schwann's Fundraiser  
 4-H Benefit Day with Fuddrucker's  
 Feed a friend - It's as Easy as Pie  
 LaQuinta

### Page 5

4-H Clover Kid Opportunities  
 4-H Projects • Shooting Sports

### Page 6

- Archery, Rifle, Shotgun
- Photography Project
- 4-H Consumer Decision-Making
- Livestock Projects - Major Show Entries, Non-Livestock Show Entries, Swine Project Validation, Livestock Judging, Horse Quiz Bowl, Horse Judging,

### Page 7

District Contest Registration  
 Rabbit Show  
 Accidental/Medical Insurance  
 Texas Brigade

### Page 8

County 4-H Food Show Results

### Page 8 & 9

County 4-H Food Challenge Results

### Page 9 & 10

Kay's Korner

### Page 11 & 12

November / December Calendars

### Page 13

Lubbock County Goat Jackpot flyer

### Page 14

Pet Food Drive

### Page 15

Schwann's Fundraiser flyer

### Page 16

4-H Benefit Day with Fuddrucker's

### Page 17

D2 4-H Shooting Sports Ambassadors

If you need any type of accommodation to participate in this program or have questions about the physical access provided, please contact Ronda Alexander at 806-775-1740 at least 2 weeks prior to the program or event.

## SCHOLARSHIPS

### *4-H Foundation Scholarship Training*

Scholarship applications are currently available on line at the 4-H Foundation website. A county scholarship preparation meeting will be held on **Tuesday, December 11 at 6:00 p.m.** at the County Extension Office. Please RSVP to Ronda by *Monday, December 10* if you plan to attend the training. Any youth in High School and their parents will find this training helpful. For anyone planning on applying for a scholarship this year please review the scholarship guidelines; for 4-H purposes, you will need to complete the FAFSA information prior to December 1.

Andy Hart, District 4-H Specialist will also be conducting 4-H Scholarship Training on **Monday, November 26**.

## PARENT- LEADERS ASSOCIATION

Parent Leaders will not meet in November or December.

## TEXAS 4-H CENTER WEBSITE

While you are surfing the web, don't forget to visit the Texas 4-H Center's website: <http://texas4hcenter.tamu.edu/> You never know what you might find. You might even want to do a little Christmas shopping.

## ARE YOU A MEMBER?

The Texas 4-H Friends and Alumni Association would like to have you as a member! To find out more about them, visit [www.texas4hfriends.org](http://www.texas4hfriends.org)

## TEEN COUNCIL

### *December Community Service- Wrapping Presents*

For our fall community service activity, Teen Council members will be wrapping Christmas presents at the Lubbock State School on **Sunday, December 9 from 3- 5 p.m.** Please RSVP by *Friday, December 7* if you plan to participate. We will be at the volunteer office [after entering the grounds (entrance from University just North of the North Loop) turn right at the first stop sign, Volunteer Center will be on the right at the next stop sign].

## *4-H Teen Leadership Retreat*

The Texas 4-H Center will be hosting a Teen Leadership Retreat **January 4-6** at the Texas 4-H Center at Lake Brownwood. The Retreat is for Senior age 4-H'ers in grades 7-12. Registration is \$140 for youth and \$90 for adults, open through *December 21* on the 4-H Center's website (not 4-H Connect). Adult chaperones are required to attend. Visit the Texas 4-H Conference Center website for more information.

### *December Community Service - Salvation Army Bell Ringer's*

Last year Teen Council members volunteered as Bell Ringer's at the 19<sup>th</sup> and Quaker Market Street. We will be doing this again this year on **Saturday, December 15** from 10 a.m. - 6 p.m. We need 2 people per shift. Please call Ronda to sign up for a shift: 10-12 p.m., 12-2 p.m., 2-4 p.m., and 4-6 p.m.

## LUBBOCK COUNTY 4-H ON-LINE

If you lose your 4-H newsletter, there's still hope. You may now access the 4-H newsletter as well as various other sources of information at: <http://lubbock.agrilife.org/>

## CLUB MANAGERS

Club Managers, as you get started with the new 4-H club year, please give Ronda a call if you have any questions, she'll be happy to assist you with the information that you need. Also, if you would like to schedule her to come to your club meeting or to present a program for your club, please contact her as soon as possible. She would like to attend at least one meeting of each 4-H club in the Fall and the Spring.

Please also mark your calendars for the next Club Managers Training which will be held on **Monday, November 26 at 5:30 p.m.** at the County Extension Office.

## COUNTYWIDE 4-H CHRISTMAS ACTIVITY

This year instead of a 4-H Christmas Party, we will be assisting with the Salvation Army Angel Tree project sorting their donations. We are tentatively planning for **Friday, December 14**, from 5-8pm. There is a possibility we would be moved to Saturday, but we will not know that until later. If you would like to assist, please sign-up and we will let you know the details when we receive them.

### ONE DAY 4-H RESCHEDULED

Due to difficult weather conditions, we had to cancel our One Day 4-H Community Service at the South Plains Food Bank Farm. We have the opportunity to reschedule for **Saturday, December 1<sup>st</sup>** from 10-12pm at the Food Bank Farm, 204 76<sup>th</sup>. Please *RSVP by Friday, November 30* if you plan to attend. Be sure to wear your work clothes and bring work gloves.

### CHRISTMAS COMMUNITY SERVICE AT BAYER AG MUSEUM

4-H has been asked to assist with a kids Christmas Event at the Bayer Museum of Agriculture on **Sunday, December 9<sup>th</sup>**. They need assistance with set-up from 1-2pm; and then being available from 2-4pm to assist with the children's activities. 4-H'ers will assist the younger children attending with the activities. So 4-H'ers need to be Intermediate or Senior age in order to assist. Please *RSVP by December 7*, if you would like to volunteer.

### 4-H ADULT & YOUTH ADVISORY BOARD

**Tuesday, November 27 at 6 p.m.** will be the date of our next 4-H Adult and Youth Advisory Board meeting. The meeting will be held at the County Extension Office Conference Room. Any interested 4-H'ers or leaders are welcomed to serve on this Board, please let Ronda know of your interest, prior to the meeting.

### SCHOOL EXCUSE POLICY

4-H members who plan to participate in livestock shows and miss school classes must sign up for the livestock shows at sign-up.



The Extension Office will make a request for your school absence prior to the event (livestock show). **This request will list only your intent to attend a certain stock show. All the dates will be listed on the excuse for the particular stock show. It is the 4-H member's responsibility to notify the school of the exact dates you will be missing.** This request will also indicate a check for the 4-H members academic eligibility for extracurricular activities; the 4-H'er, their parents and the sponsoring show will be notified. Any non-compliance by such 4-H'ers will be penalized by the school districts policy (Discipline Management System).

4-H members and families need to take the following actions–

1. Complete the 4-H school excuse form.
2. Work with school instructors on homework, tests, etc. prior to the absence;
3. **Check with school officials at least 7 days prior to absence to see that you are on the request list and determine eligibility; and notify the school officials of the exact days you will be absent.**
4. Monitor your own personal 10 day / 90% absence / attendance requirements as outlined by your school district; and
5. Thank school officials for their cooperation. Any changes in procedures/policies will be noted at sign up.

### ANNUAL PET FOOD DRIVE FOR MEALS ON WHEELS

Alyssa Elmore will be continuing the Pet Food Drive that was started by Carolyn Benitez. Donations of cat food and dog food are taken to Meals on Wheels for their senior clients.

The pets of the elderly and disabled in many cases are the only companionship these people have and they will give their own food to the pet instead of eating it themselves. By providing the pet food with their meals the clients' lives are made better.

Alyssa will be collecting pet food and/or donations from **November 13 through December 15**. You can drop your donations off at the County Extension Office or call 787-6356 or 252-0727 to make arrangements for donations. Thank you for your assistance. You may also make a monetary donation and she will purchase pet food for you.

### 4-H RECORDBOOKS

If you are interested in 4-H recordbooks and record keeping, please make sure to attend the County training on **Tuesday, December 4** at 6:30 p.m. at the County Extension Office. *Please RSVP by noon on December 3*, if you plan to attend. If you can't make this one, there will be more scheduled in the Spring or you may have one scheduled specifically for your 4-H Club. There are changes to the Recordbook forms, so everyone needs to attend a training to get the updated information.

**4-H SCHWANN'S FUNDRAISER**

Through the holidays, Lubbock County 4-H will be participating in the Schwann's Fundraiser. Our fundraising date will be November 15 through December 30. To support us, simply use our code "43413" for online purchases or for the online purchase of a gift card. See the flyer in the newsletter for more information. Be sure to share our code with your neighbors, friends and family. This works for any location - not just the Lubbock area.

**4-H BENEFIT DAY WITH FUDDRUCKER'S**

Lubbock County 4-H will be having a fundraiser at Fuddrucker's (5501 Slide Rd) on **Thursday, November 29**; so we need your help supporting the event and telling all of your friends to attend. They must say they are there to support Lubbock County 4-H when they order, in order for us to get credit for the fundraiser. Tell everyone and be sure to attend and help support 4-H. Eat out, let them do the cooking and the dishes, and support Lubbock County 4-H!.



This Holiday Season,  
**"Feed a Friend - It's as Easy as Pie!"**  
November 10-17



**Don't forget to support our friends at Meals on Wheels!**

For a \$5 donation to Lubbock Meals on Wheels, donors will receive a coupon for a Sara Lee pie.

Donations can be made at any local United Supermarkets location (through the cashier, at the customer service counter, or to the Meals on Wheels' representative in the store) or at the Meals on Wheel' office, 2304-34th Street. Coupons are redeemable at Lubbock United Supermarkets through December 31, 2018.

Sponsored by united Supermarkets/Market Street, KLBK-13 and KAMC-28.

They are also in need of volunteers to man a table in the United Stores to ask for \$5 donations for this campaign. To sign up please contact [Brittany@Lubbockmow.org](mailto:Brittany@Lubbockmow.org).

**LaQuinta**

**15% DISCOUNT FOR TEXAS 4-H SUPPORTERS**



**15%**

Discount for Texas 4-H Supporters



La Quinta Inns & Suites® is proud to be part of a Alliance Agreement with the Texas 4-H Organization. Supporters can enjoy a 15% discount at any of our 700-plus locations in the United States, Canada and Mexico.

Visit [LQ.com](http://LQ.com) (code TX4H) or call 800-SLEEPLQ (753-3757) (ask for "TX4H Youth Discount")

\*15% discount is available at participating hotels for Texas 4-H Organization members, their families, and supporters. Tax not included, some blackout dates may apply, cannot be used in conjunction with any other discounts or special offers. Subject to availability. LA QUINTA is registered in the U.S. Patent and Trademark Office. ©2009 LQ Management L.L.C.

Don't forget to use your LaQuinta discount card the next time you travel. You will receive a 15% discount as well as provide a reward to the Texas 4-H program. See the discount card below. If you are calling to make reservations, be sure to ask for the "TX 4H Youth Discount". Anyone is welcomed to use the discount, so be sure to share this information with your family and friends!



## 4-H CLOVER KID OPPORTUNITIES

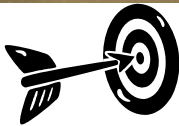
Did you know that 4-H is for everyone! As the new school year is upon us, Lubbock County is creating new, fun and exciting ways to incorporate the 4-H Clover Kids into our program. Clover Kids are available for children ages 5 to 8 years (K-2). At each meeting there will be an activity and a 4-H project learning experience for each youth to be involved in. Clover kids do not pay an enrollment fee, but they do need to be enrolled in 4-H.

Our next Clover Kid meeting will be held on **Wednesday, November 7 from 5:30-6:30 p.m.** at the Texas Tech Equestrian Center, 5712 CR 1500; we will meet by the concession stand. The program will be on the 4-H Horse project. For December, we will meet on **Thursday, December 6** from 5:30 - 6:30 p.m. at the County Extension Office, and will be doing a community service activity. There is no cost to attend.

## 4-H PROJECTS



### SHOOTING SPORTS PROJECTS AIMING FOR THE BULL'S EYE



The 4-H Shooting Sports project is one that is not designed for individual study. Due to safety concerns, a minimum of one certified coach is required to supervise any 4-H Shooting Sports event or practice session. We offer 3 discipline trainings in Lubbock County. They include 3-Position Smallbore Rifle, Archery, and Shotgun. Because of the popularity of the Shooting Sports project, we must reserve the right to limit participation if necessary to maintain a safe shooting environment. If you are interested in Rifle or Archery, *please call the Extension Office to get your name on the list.* The January Newsletter will have specifics for information about meetings.

#### 2019 4-H Archery Program

The Lubbock County 4-H Archery Program will be begin in February. There is a weekly project fee for this project. Levels of Competition available are:

- District 4-H Archery Contest in May
- Invitational Shoots
- State 4-H Indoor Archery Match
- State Postal League

To register for this project, first contact the Lubbock County extension Office at 775-1740. This is a very popular project, so be sure that you sign up early.

#### 2019 3-Position Rifle Program

The spring 3-position rifle project involves indoor .22 cal. Rifle shooting in the prone, standing, and kneeling positions. Firearms are provided. Practices are held Mid January through April. There is a weekly project fee to participate.

Competition includes:

- County and District competition - all age levels.
- Optional Statewide Postal League Competition - Intermediate and Seniors Only.
- State Rifle Match Competition - Seniors Only - qualifying event. Top 3 teams at District.

If you are interested in the 3-position rifle project, contact us at the Lubbock County Extension Office at 806-775-1740 and put your name on the interest list.

#### 2019 Shotgun Program

This is a summer program scheduled to begin in April, 2019. Sign up for this project will be in the March/April 4-H Newsletter.



### PHOTOGRAPHY PROJECT

#### Senior Photography Contest Rules

It is never too early to begin thinking about and taking photos for the Senior Photography contest. You may pick up the new rules from the Extension Office or you may access them at

[https://texas4-h.tamu.edu/wp-content/uploads/2018-19\\_texas\\_4h\\_photography\\_tules.pdf](https://texas4-h.tamu.edu/wp-content/uploads/2018-19_texas_4h_photography_tules.pdf)

Just a reminder photos must place 1<sup>st</sup> at the county contest in order to advance to state. The county contest is held mid-March. Watch the newsletter for more details. Juniors and Intermediates will have the same categories, although specifics about District haven't been determined yet. You can start taking photos now.



**4-H Consumer Decision-Making**

If you haven't signed up for the Consumer Decision-Making project, it isn't too late. The District Contest is **December 8** in Lubbock. Practices are being held at the Extension Office on **November 6 at 5 p.m., November 14 at 5 p.m., Nov 20 at 5 p.m. and Nov 27 at 5 p.m.** District contest registration deadline is December 3, call Ronda to be sure you get registered for the competition. We will also have a practice contest to prepare for District which will be held on **Tuesday, December 4 at 5:00 p.m.**



**LIVESTOCK PROJECTS**

Major Show and County Stock Show Entries  
Monday through Thursday  
November 5, 6, 7, 8, 2018  
8 a.m. - 4:30 p.m.  
County Extension Office, 916 Main,  
Suite 401

**Dates for the 2019 Livestock Shows** can be found on our website <http://lubbock.agrilife.org/>. Click on Links - Major Stock Shows.

**Entries for Non-Livestock Show Contests at Major Livestock Shows**

DEADLINE IS NOV 9<sup>th</sup>!

If you plan to compete in a Major Livestock Show, in a non-livestock show competition (i.e. public speaking, horse judging, food challenge, etc.) please do not wait until the posted stock show deadline to complete your entry at the County Extension Office. The majority of these entries must go through the County Extension Office and be submitted when stock show entries are sent in. This requires some time and expense to send these entries in. Please contact us early, to let us know you plan to enter and we will let you know when the office deadline is. Robert does not wait until the last day to send in entries, therefore if you miss the county entry submission, you will have to pay any additional expenses, as well as postage for this

to be sent in. Some Livestock Shows also include an office/paperwork fee in addition to the contest entry fee. If you have questions, please contact us immediately - **DO NOT WAIT UNTIL THE LAST DAY TO ENTER!**



**SWINE PROJECT**

**Validation**

All swine projects (barrows) must be validated for ownership in late November. This includes barrows which will be shown at Lubbock County and all major livestock shows.

Validation consists of ear tagging, hair samples, recording ear notches and completion of the appropriate forms. The validation process will be conducted similar to last year.

All members with swine will be notified of validation times and locations. If you are not notified by November 21 - call the office for details.

**Lamb, Goat, Steer and Swine Showmanship Clinic**  
District 2 Livestock Ambassadors will have a Lamb, Goat, Steer and Swine Showmanship Clinic on **December 15, 2018**, at the Texas Tech Arena. Time TBD. Admission Free. Call Robert at the County Extension Office for details.

**Livestock Judging**

If you are interested in participating contact Robert to get on the list. Watch the Lubbock 4-H Livestock FACEBOOK page for details and on Twitter @4hLubbock

**HORSE PROJECT**

**Horse Quiz Bowl**

We currently have 4-H Horse Quiz Bowl practices being held. If you are interested in participating, please contact Ronda for contact information. The District Contest will be held in Lubbock on **December 8** in the afternoon, with registration due on 4-H Connect by *December 3*. Please notify Ronda if you have a team competing, so that she can register you for the competition on 4-H connect. Please note Quiz Bowl rules of play have changed, contact Ronda for the updated information.

**4-H Horse Judging**

We have several 4-H groups which are planning 4-H Horse Judging practices and many opportunities for you to get involved. If your club does not have a horse judging group, then you are welcome to practice with the Shallowater group, which typically meets on Sunday afternoons. The District contest isn't until April, however they will begin

practices soon. To sign up you may contact Ronda at the Extension Office or Samantha Kendrick at Shallowater - 474-8791. Tiffanie Brooks is also working with a Senior Horse Judging group that will meet separately from the Shallowater group. Please contact Ronda to find out meeting information for this group.

### ***District Contest Registration Information***

If you plan to compete in the District Horse Quiz Bowl, Meat Judging, Beef Quiz Bowl, or Consumer Education Contest – be sure to let Ronda know by the registration due date listed with the contest information. She will enter members on 4-H Connect.

### **4-H RABBIT PROJECT**

What's up Doc? Well it is the 4-H Rabbit Project meeting series which will begin on **Monday, November 26** at 7 p.m. at the County Extension Office. Lamb County Volunteer and Rabbit Breeder, Teresa DeSautel will be conducting the meetings for us. For the first meeting, we will be learning the basics about bunnies. We will also schedule our next project meetings, which will include a visit to her facilities to see her bunnies. Please RSVP by *Monday, November 19*, if you plan to attend the meeting. We won't have bunnies at the first meeting, so you can leave them at home.

### **ACCIDENTAL/MEDICAL INSURANCE**

The Texas 4-H Youth Development Program is pleased to announce that an accidental/medical insurance policy has been purchased through American Income Life for all 4-H members and volunteers for the 2018-19 4-H year. This policy provides blanket coverage for all enrolled 4-H members and approved 4-H volunteers for all 4-H events, including 4-H events and activities that require travel across county and state lines. Therefore, counties no longer have to purchase an annual policy or a policy for individual events and activities throughout the year.

Please keep in mind that this policy is only for enrolled and active 4-H members and approved 4-H volunteers. Therefore, you may want to consider an additional policy for individual events and activities that involve non-4-H members or adults that are not approved 4-H volunteers. American Income Life is a nationally recognized insurance provider for many 4-H activities and events. However, other companies offering similar insurance coverage can be explored.

The policy purchased is also an excess (secondary) policy. For 4-H members and volunteers that have health insurance, their personal policies will be the primary insurance provider for treatment/care with the American Income Life policy providing secondary coverage for costs incurred that were not covered by their primary insurance provider. For 4-H members and/or volunteers that do not have health insurance, this American Income Life policy will provide primary coverage. Those for which this policy will serve as primary coverage, the Policy Number (found on the claim form) will need to be provided to the medical facility providing care for the 4-H youth/adult volunteer.

If any accident, injury or illness occurs at a 4-H event in which insurance coverage must be accessed, you are asked to complete the attached claim form and submit it to Courtney Dodd ([cfdodd@ag.tamu.edu](mailto:cfdodd@ag.tamu.edu)) within 10 days of the incident. This form may also be accessed on the publications page of the Texas 4-H Website or at the following direct link: <http://texas4-h.tamu.edu/files/2015/09/Texas-4-H-Claim-form.pdf>

If any accident, injury or illness occurs at a 4-H event in which insurance coverage must be accessed, you need to contact Ronda immediately so that claim information can be properly submitted.

### **TEXAS BRIGADE**

Bax Edwards shares his experiences from the Texas Brigades Camp.

### ***Local Youth Attends Prestigious Camp***

Texas Brigade camps across Texas are teaching and educating young teens. I was fortunate to be selected to attend the North Texas Buckskin Brigade last July. This is one of the 8 brigade camps that are offered. This camp was a good learning opportunity for me. I got to do many things while attending this camp.

Twice a week we got to shoot at the ranges. We got to shoot with two different kinds of firearms. The first kind was a scoped twenty-two rim fire that the camp owns. With this gun, we got to shoot at 1 knock-over targets and a spinning target that we had to shoot free handed for a competition. I ended up getting 4<sup>th</sup> out of 30 kids in my camp. The other gun was a 243, and it was very fun, but it was not for competition.

We also learned about deer hunting and raising deer too. One way we learned about a deer was by learning about

the anatomy of deer. We first had to learn about the insides to further help us in raising and feeding deer on our property. We also had to know how to manage our land based on that information. There are two ways you can manage your land. One is by knowing what kinds of plants you are growing and choosing the best kinds of plants for your ranch. The other way is by managing your deer populations. By cowering your deer to have enough food, you can keep your buck to doe ratios even.

Another thing we got to do at camp was work on our speaking skills and abilities. One way we worked on this was by marching every morning at 6:00 a.m. This taught us to speak out of our diaphragm and be able to speak loud and clear. Another way we worked on it was by giving a power point presentation in front of the camp directors as a group. We were also interviewed by our camp director in front of a camera, and then we watched it and critiqued ourselves.

One of the best parts of camps was building friendships. We did this by being in our herds which was a group of eight kids. The herds were assigned to us, and we did everything together. Through the week we built friendships by working through activities together. The activities gained us points, and by the end of the week, whichever herd had the most points got to go on the top herd hunt and hunt for Axis deer. My herd, unfortunately, did not get first, but my cousin, Cutter's group did, and he will get to attend the hunt in January. The things we worked through bonded us together and formed an unforgettable friendship.

Overall, this camp had a big impact on me as a person. The speaking, shooting, friendships, and many other things I did at the camp were all excellent experiences. This camp was very educational and is great for outdoor people like myself.

If you're interested in attending camp or just want more info. go to : [www.TexasBrigades.org](http://www.TexasBrigades.org) or call: 210-556-1391.



### County 4-H Food Show Results

Jr. Fruits and Vegetables	Sadie Cole	1 <sup>st</sup>
Jr. Breads and Cereals	Jenny Sullivan	1 <sup>st</sup>
	Karter Bowen	2 <sup>nd</sup>
Jr. Main Dish	Paige Chowning	1 <sup>st</sup>
	Ryan McCallister	2 <sup>nd</sup>
	Kate Harlien	3 <sup>rd</sup>
	Eamon Carter	4 <sup>th</sup> tie
	Brynlyn Barnwell	4 <sup>th</sup> tie
	August Ramsey	5 <sup>th</sup>
Jr. Nutritious Snacks	Brynlee Edwards	1 <sup>st</sup>
	Lucy Fritz	2 <sup>nd</sup>
	Rylan Messer	3 <sup>rd</sup>
Int. Breads and Cereals	Seth Crump	1 <sup>st</sup>
Int. Fruits and Vegetables	Dalton Baldrige	1 <sup>st</sup>
Int. Main Dish	Kyndra Messer	1 <sup>st</sup>
	Lainey Johnson	2 <sup>nd</sup>
Int. Nutritious Snacks	Joseph Fritz	1 <sup>st</sup>
Sr. Fruits and Vegetables	Colton Baldrige	1 <sup>st</sup>
Sr. Main Dish	Ashlynn Messer	1 <sup>st</sup>
Clover Participants: Brynn Bading, Bristol Chowning, Brix Edwards, Maci Johnson, and Benjamin Ramsey		

### Lubbock County 4-H Food Challenge County Results

#### Junior - Breads & Cereals

Shallowater 1 2 <sup>nd</sup> place	Katie Ogle, Lilah Graves, Ellie Shoaf, Kennadi Altmann
Shallowater 3 3 <sup>rd</sup> place	Emma Caballero, Emma Caudle, Abriana Carrasco, Valeigh Salyer
Wildcat 4 1 <sup>st</sup> place	Molli Harris, Abigail Follis, Brylin Parker, Cutter Griffis

#### Junior - Nutritious Snacks

Shallowater 4 3 <sup>rd</sup> place	Sadie Cole, Taylor Dennis, Adyson Sandoval, Eaman Conner
-------------------------------------	--



Frenship 2<sup>nd</sup> place

Maci Cooper, Keegan Martin, Mikayla Roberts,  
Haley Zeledon

Shallowater 2 1<sup>st</sup> place

Aubree Gutierrez, Lainey Barker, Presley Kute,  
Rayleigh Stephenson

#### **Int. - Main Dish**

Shallowater 12<sup>nd</sup> place

Lana Brickey, Reagan Winn, Mackenzie Hopkins

Wildcat 2 1<sup>st</sup> place

Kylan May, Audrey Mull, Nate Gumaer, Destry  
Griffis

#### **Senior - Main Dish**

Wildcat 2 1<sup>st</sup> place

Byron Goen, Avery Goen

#### **Senior - Breads & Cereals**

Wildcat/ Frenship 1<sup>st</sup> place

Alyssa Elmore, Madison Taylor, Audrey  
Crawford, Ashlynn Messer

#### **Junior - Fruits & Vegetables**

Wildcat 1 2<sup>nd</sup> place

Brynlee Edwards, Jenny Sullivan, Kincy Wilson,  
Rylan Woody

Wildcat 2 1<sup>st</sup> place

Paige Chowning, Abby Goen, Lucy Fritz, Caleb  
Mull

Wildcat 3 3<sup>rd</sup> place

Brenlei Parker, Emma Clawson, Reese Williams,  
Kylee McDonald

#### **Int. - Breads & Cereals**

Shallowater 4 2<sup>nd</sup> place tie

Callie Lain, Milei Wright, Malia Kelly

Wildcat 3 2<sup>nd</sup> place tie

Wyatt Taylor, Cooper Modisette, Lainey Johnson

Shallowater 3 1<sup>st</sup> place

Khaki Bishop, Katie Holcomb, Ann Dugger,  
Mallory Emery

#### **Int. - Fruits & Vegetables**

Shallowater 2 3<sup>rd</sup> place

Dalton Baldrige, Eli Bowe, Jud Bowe

Wildcat 1 1<sup>st</sup> place

Bax Edwards, Brier Griffis, Joseph Fritz, Kendall  
Follis

Shallowater 5 2<sup>nd</sup> place

Kyndal Clayton, Taylor Stevens, Kade Bobo,  
Addison Medley

#### **Senior - Fruits & Vegetables**

Shallowater 1<sup>st</sup> place

Taylor Everitt, Jace Morton, Colton Baldrige,  
Jalyn Levens

#### **Senior - Nutritious Snacks**

Wildcat 4 1<sup>st</sup> place

Brooke Zwonitzer, Molly Zwonitzer, Jenna Caffey

### ***KAY'S KORNER***

#### **Traveling with Children for the Holidays? Make Sure All Children are Riding Safely**

Christmas is almost here, and families will be traveling by car and airplane to visit with friends and relatives. This is an appropriate time to stop and think about having your child in the proper car seat before planning your trip. Although parents always want to protect their children, studies show that nationally, 3 out of 4 car seats are not used correctly. For a car seat to best protect your child, it must be the right seat for your child's age, weight, height and developmental stage, and must fit properly in your vehicle while being installed correctly and securely.

Children are at greater risk than adults in a vehicle crash. In fact, motor vehicle crashes are one of the leading causes of death for children 14 and under. Safety belts and car seats are the single most effective tool in reducing these deaths and injuries. Unfortunately, in 2015 alone, less than half of the children killed in vehicle crashes in Texas were known to be restrained.

That's why the Texas A&M AgriLife Extension Passenger Safety Project is urging all parents and caregivers to secure children properly in age- and size-appropriate child safety seats in the back seat of your vehicle — which is the most effective thing you can do to protect them in the event of a crash. In fact, in motor vehicle crashes, child safety seats reduce the risk of fatal injury by 71 percent for infants and by 54 percent for toddlers. Get a free inspection by a certified Child Passenger Safety Technician to make sure you are using the child safety seat correctly. To locate a technician in Texas, visit: <http://buckleup.tamu.edu>. Technicians can provide hands-on advice and instruction.

If you are traveling by plane, it is always safest to purchase a separate seat for your child, and bring an FAA-approved car seat. Most car seats, except for booster seats, are approved for use on an airplane. Turbulence is the greatest danger for a child on an airplane trip, and a properly

installed car seat can protect your child from injuries due to being thrown around in the plane. Traveling with your car seat will also ensure that you will have it ready for your use when you arrive at your destination.

For a child safety seat to do its job correctly, it must be:

- Appropriate for your child's age and size
- Installed properly in your vehicle
- Adjusted to fit your child securely

Follow these guidelines from American Academy of Pediatrics to keep your children riding safely:

- **Infants and Toddlers – Rear-facing Only and Convertible Seats**

All infants and toddlers should ride in a rear-facing seat until they are at least 2 years of age or, preferably, until they reach the highest weight or height allowed by their car seat manufacturer.

- **Toddlers and Pre-schoolers – Convertible or Forward-facing Seat with a Harness Seats**

Children who have outgrown the rear-facing weight or height limit for their convertible seat should use a forward-facing seat with a harness for as long as possible, up to the highest weight or height allowed by the car seat manufacturer.

- **School-age Children- Booster Seats**

Children whose weight or height exceeds the forward-facing limit for their car seat should use a belt-positioning booster seat until the vehicle seat belt fits properly — typically this is between the ages of 8-12 years old.

- **Older Children – Seat Belts**

When children are old enough and large enough to use the vehicle seat belt alone, they should always use lap and shoulder seat belts for the best protection.

**Remember:** All child passengers under age 13 should ride securely restrained in the back seat, where they are safest — every trip, every time.

Take time before you leave to make sure that the holidays will be a safe and enjoyable time for your family. Buckle everyone up correctly on every trip!








Ronda Alexander  
County Extension Agent, 4-H  
Lubbock County



Lubbock County Extension Staff  
P.O. Box 10536, Lubbock, TX 79408  
916 Main, Suite 401, Lubbock TX 79401  
(806) 775-1740 Fax: (806) 775-1758

E. Kay Davis CEA-Family & Community Health	Robert Scott CEA-Agriculture
Nancy Trevino-Schafer CEA-Urban Youth Development	Christina Reid CEA-Horticulture
Open EA-Integrated Pest Management	Open CEA-Agriculture

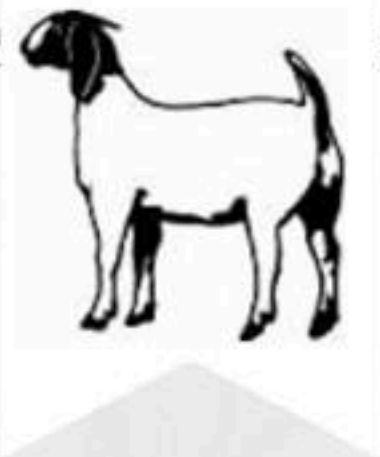
The information given herein is for educational purposes only. References to commercial products or trade names is made with the understanding that no discrimination is intended and no endorsement by the Extension Service is implied.

We will seek to provide reasonable accommodations for all persons with disabilities for any of our meetings. We request that you contact Texas A&M AgriLife Extension Service - (806) 775-1740, as soon as possible to advise us of the auxiliary aid or service that you will require.

Sunday	Monday	Tuesday	Wednesday	Thursday	Friday	Saturday
 <p>Texas A&amp;M AgriLife Extension Service Lubbock County 4-H <b>NOVEMBER 2018</b></p>						
				1	2	3
4	5	6 ● 5:00 Consumer Practice, CEO	7 ● 5:30-6:30 p.m. 4-H Clover Kids meeting, TTU Equestrian Center	8	9	10
8:00 a.m. - 4:30 p.m. Livestock Show Sign-Up, Lubbock						
11	12 ● County Holiday CEO Closed 	13	14 ● 5:00 Consumer Practice, CEO	15	16	17
18	19 	20 ● 5:00 Consumer Practice, CEO	21	22 	23	24
Swine Validation		County Holidays - Thanksgiving				
25	26 ● 5pm Club Mgr Tr., CEO ● 7pm 4-H Rabbit Proj. Mtg, CEO ● 4-H Foundation Sch Tr	27 ● 5pm Consumer Practice, CEO ● 6pm 4-H Adult & Youth Adv. Board, CEO	28 	29 4-H Benefit day at Fuddruckers	30 ● RSVP if attending One Day 4-H Community Service on 11-1	
Swine Validation						

Sunday	Monday	Tuesday	Wednesday	Thursday	Friday	Saturday	
		Texas A&M AgriLife Extension Service Lubbock County 4-H <b>DECEMBER 2018</b>					1 ●10-12pm One Day 4-H Community Service, SP Food Bank Farm
2	3 ●RSVP if attending Recordbook training on 12-4	4 ●6:30pm 4-H Recordbooks Co. Training, CEO	5	6 ●5:30-6:30pm Clover Kid Community Service Activity, CEO	7 ●RSVP if attending Community Service events on 12-9	8 ●District 2 Consumer Decision-Making Contest ●pm District 2 Horse Quiz Bowl Contest	
9 ●3-5pm Teen Council Community Service, Lubbock State School ●1-4pm Community Service at Bayer Ag Museum	10 ●RSVP if attending Scholarship Training on 12-11	11 ●6pm County Scholarship Prep Meeting, CEO	12	13	14 ●5-8pm Salvation Army Angel Tree	15 ●10am-6pm Teen Co. Bell Ringers, market Street 19 <sup>th</sup> & Quaker (Call Ronda to sign up for a shift) ●Showmanship Clinic, TTU Arena	
16	17	18	19	20	21	22	
23	24	25  Christmas Day <div style="border: 2px solid blue; padding: 5px; text-align: center; margin-top: 5px;">             County Holiday - CEO Closed           </div>	26	27	28	29	
30	31						





# LUBBOCK COUNTY GOAT JACKPOT JUDGE: Chase McPhaul

== 1/9/19-6pm ==

Location.....TTU Livestock Pavilion  
Entry Deadline.....Day of Show  
Official Weigh-in.....5:00-6:00pm (no weigh back)  
Entry Fee..... \$25

Showmanship starts at 6:00pm

## SHOW RULES AND GUIDELINES

1. Open to any 4H or FFA member in Lubbock County (Pewees do not have to be members)
2. **Goats must be state validated**
3. Weathers and/or does allowed
4. Minimum weight 50 lbs. -no maximum
5. Horns allowed, but must be tipped
6. Must be uniformly slicked sheared, no longer than 3/8 inch above the hocks
7. No tooth rule
8. OFFICIAL WEIGH IN. NO WEIGH BACK.
9. Buckles awarded for Grand, Reserve Grand Champions
10. Buckles to Showmanship Winners

Show order: Pewee (2nd grade and under), Junior (3rd-5th grade), Intermediate (6th-8th grade), Sr. (9th-12th grade),

Contact Robert Scott for more information  
806-775-1740



# PET FOOD DRIVE

Alyssa Elmore of the Wildcat 4-H Club in Lubbock County will be continuing the Pet Food Drive again this year.

Donations of cat food and dog food are taken to Meals on Wheels for their senior clients.

The pets of the elderly and disabled, in many cases, are the only companionship these people have and they will give their own food to the pet instead of eating it for themselves. By providing the pet food with their meals, the clients' lives are enhanced.

Alyssa will be collecting pet food and/or donations from **November 12 through December 14.**

**There will be a drop of location at the District Fall Round Up on December 8, 2018.**

You can drop your donations off at the Lubbock County Extension Office or call 806-252-0727 or 806-787-6356, to make arrangements for donation drop-off in Idalou.

Thank you for your help!

You may also make a monetary donation and she will purchase pet food for you.



# SCHWANN'S

## Lubbock County 4-H Fundraiser

Timeframe: November 15–December 30, 2018

Process:

- 1) Log onto [www.schwanns.com](http://www.schwanns.com)
- 2) Enter Promotional Code: 43413
- 3) Order desired products online and they will be delivered to your location
- 4) Or place your order by phone at 1-855-870-7208.



Lubbock County 4-H will receive credit for 20% of all products ordered through this Schwann's promotion and 40% for gift card purchases.

Please share with family, friends and co-workers.



*Dine Out for*  *a Good Cause!*

# BURGERS

## **FOR** Benefits

**LUBBOCK COUNTY 4-H**  
*Thursday, November 29<sup>th</sup> (all day)*  
*Fuddruckers- 5501 Slide Rd*

**MENTION THE ABOVE NAMED ORGANIZATION  
WHEN YOU ORDER AND YOUR GROUP  
WILL RECEIVE **15%** OF PURCHASE  
AS A DONATION FROM FUDDRUCKERS.**







## District 2 4-H Shooting Sports Ambassadors 2018-19 Program Requirements and Expectations



Applications are due by Monday, December 3, 2018 to Margaret Freeman at [mgfreeman@ag.tamu.edu](mailto:mgfreeman@ag.tamu.edu)

Previous 4-H Shooting Sports Ambassadors must participate in this application process to be eligible for a position for the 2018-19 4-H year. Current Texas 4-H Ambassadors will only be required to turn in a paper application and will not be required to maintain the district service hours. State 4-H Ambassadors will not be subject to the same point system as District 2 4-H Shooting Sports Ambassadors (they will be responsible for the state point system only).

### Basic Requirements for Applicants (all must be met)

- Must be enrolled in high school in the 9<sup>th</sup> – 12<sup>th</sup> grade as of September 1, 2018.
- Must be actively enrolled member of Texas 4-H via 4-H Connect for current 2018-19 year.
- Must be an active member of a county-level Texas 4-H Shooting Sports project coached by a certified coach.
- Selection requires attaining and reporting a minimum number of service points within the service year to maintain an Ambassador position.

### Expectations of District 2 Shooting Sports Ambassadors

- Be an active part of the District 2 4-H Shooting Sports program.
- Point system will be distributed and required upon selection of Ambassadors.
- Communicate with fellow district Ambassadors and the adult leader and 4-H Specialist.
- Maintain personal conduct at all times that will represent a positive leader and role model for 4-H and the shooting sports program.
- Be an active, positive support for the 4-H Shooting Sports project at the county and district levels.
- Be available and participate in various activities and events other than competitions to promote and support 4-H and shooting sports.
- Participate in the mandatory training designed for the District 2 4-H Shooting Sports Ambassadors.

### Application Process

1. Applications due to the District 2 Office by December 3, 2018.
2. The application consists of two parts:
  - a. The first part is submission of application to [mgfreeman@ag.tamu.edu](mailto:mgfreeman@ag.tamu.edu) .
  - b. Applicants will be required to send a personal video which introduces themselves, tells where they are from, what disciplines they have participated in, and why they would make a good Ambassador. Please record a video using Youtube and send a link in with your application for viewing.
3. Returning Ambassadors are required to complete an application and do not need to submit a video.
4. State 4-H Ambassadors will be accepted automatically if they submit the application. State 4-H Ambassadors will serve as mentors and assist the advisors with the District 2 4-H Shooting Sports Ambassadors.