



4-H NEWS LEE COUNTY

TEXAS A&M
AGRI LIFE
EXTENSION

County Show Alerts

The 2016 Lee County Junior Livestock Show (LCJLS) is earlier than in years past.

Lost Ear Tag

LCJLS General Rule 4. (k)

Lost ear tags must be reported to the Extension office immediately.

All animals will be retagged prior to weigh in at the LCJLS Show Barn on March 2. There will be a \$2 retag fee will be applied to each animal.

MARCH 2 through MARCH 5

Here are some important dates and information concerning your 4-H participation.

Entry Deadline

LCJLS General Rule 4. (g)

- Entry deadline is **FRIDAY, JANUARY 8**. 4-H entries must be in the Extension office by 4 pm on Friday, January 8.
- Entry fees must be paid when entry is turned in.
- Exhibitor's Social Security Number must be included on Entry Form.
- Entry requires signatures of both the Exhibitor and Parent/Guardian.

Scholastic Eligibility

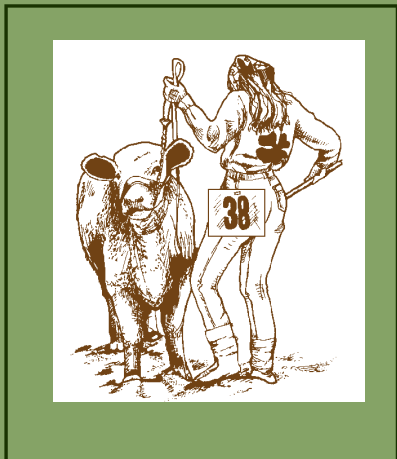
LCJLS General Rule 4. (d)

The Extension office will request the academic eligibility directly from each school for each 4-H exhibitor.

Excused absences from school will be requested for Wednesday, March 2, through Friday, March 4.

LCJLS follows the policies as set out by the Texas Education Agency. If an Exhibitor is

continued on Page Two



Lee County Extension Office

310 S Grimes Street
Giddings, TX 78942

979-542-2753; office

979-542-2362; fax

e-mail: lee.county@agnet.tamu.edu

<http://Lee.AgrLife.org>

Tonya Poncik
Tonya Poncik

Extension Agent
Family & Consumer Sciences

Keeton Ehrig
Keeton Ehrig

Extension Agent
Agriculture/Natural Resources

Educational programs of the Texas A&M AgriLife Extension Service are open to all people without regard to race, color, religion, sex, national origin, age, disability, genetic information or veteran status. The Texas A&M University System, U.S. Department of Agriculture, and the County Commissioners Courts of Texas Cooperating

Indoor Archery Contest

District 9 is hosting a 4-H Indoor Archery Contest in Somerville on January 29 and 30. The event, open to 4-H'ers grades 3 through 12, will be hosted at Somerville High School.

Equipment classes will include:

Genesis Bow — No sighting devices, release aids, or stabilizers permitted. Original arrow rest only.

Bare Bow — No sighting devices, release aids, wheels or releases permitted. Must be longbow or recurve design only.

Recurve — Olympic or JOAD class bows and equipment. No magnified sights, wheels, or releases permitted. Must be longbow or recurve design only.

Compound Aided — Release aids, optical sights permitted. Design must include an axel

and wheel (cam).

Compound Unaided — No optical sights, release aids or stabilizers (multiple pins and single pin adjustable sights okay). Design must include an axel or wheel (cam).

Archers may compete in both recurve and compound divisions if they so choose for an additional fee. It is strongly recommended that archers choosing double entry, shoot one of their rounds on the first evening and the second round on the primary competition day. Archers who choose to shoot more than one bow, are asked to shoot two bows only.

Entry fee is \$15. Register on-line through your 4-H enrollment at <https://texas.4honline.com/>. Online registration will close on January 17, 2016.

Calculating Weight Gain for Market Projects

Show weights are the weight ranges for each specific species. Only animals within show weights will be permitted to be shown.

All Market Animals will be weighed on the Show Grounds by a qualified person appointed by the LCJLS Board. Weighing will begin at the time shown on the schedule (printed on Pg. 3). Each species will weigh in the order designated by the superintendent of that

department.

Animals must be brushed clean when presented for weighing. The animal's weight will be recorded on the back of each exhibitor's card.

The "Ownership" declared when the animal is presented at weigh-in (before entering the scale) is FINAL. Only animals within Show

weights will be permitted to be shown.

- Meat Rabbits — 10-15 lbs. per pen
- Market Lambs — at least 100 lbs.
- Market Hogs — at least 220 lbs., not over 280 lbs.
- Market Steers — minimum of 1,000 lbs.
- Market Goats — between 70 lbs. and 125 lbs.

A 3-pound weight tolerance will be allowed on the minimum and maximum weight limit; meat rabbits are allowed a 3 oz. tolerance per pen.

Weigh-In Countdown

Based on the ADG calculated for your livestock project, feed can be adjusted according to the number of days before official stock show weigh-in.

DATE	#Days	DATE	#Days	DATE	#Days	DATE	#Days
FEB 10	21	FEB 15	16	FEB 20	11	FEB 26	5
FEB 11	20	FEB 16	15	FEB 21	10	FEB 27	4
FEB 12	19	FEB 17	14	FEB 22	9	FEB 28	3
FEB 13	18	FEB 18	13	FEB 23	8	FEB 29	2
FEB 14	17	FEB 19	12	FEB 24	7	MAR 1	1
				FEB 25	6	MAR 2	WEIGH IN

Average Daily Gain

Average Daily Gain (ADG) is the amount of weight gained per day by the animal over a given period of time. If your animal does not make the minimum weight or is overweight, then you may not be able to participate at the County Junior Livestock Show. By keeping track of your ADG every two weeks, you can determine if your animal is in the weight range required for the stock show.

For example, an animal weighs 800 pounds on January 1 and weighs 841.5 pounds on January 15; the animal gained 41.5 pounds in 14 days.

$$41.5 \text{ lbs.} \div 14 \text{ days} = 2.96 \text{ lbs./day}$$

$$\frac{\text{total lbs. gained}}{\text{\# of days fed}} = \text{Avg. Daily Gain}$$

County Show Alerts

continued from Page One

January 19.

determined ineligible on Wednesday, March 2, 2016, then the entry is ineligible.

Watch your progress reports closely.

All broilers are required to be picked up that exact day. Please schedule for someone to be available for pick up. As the date gets closer, the Extension office will contact the Broiler Exhibitors by e-mail to announce an approximate time for pick up.

Validation Dates

LCJLS General Rule 4. (i)

The remaining Validation Date regarding the 2016 LCJLS is for Meat Rabbits.

Meat Rabbits must be validated on January 31, 2016, between 1 pm and 3 pm at the LCJLS Show Barn.

Animal Clinics

There are three animal clinics scheduled in Lee County. Please see Page Three for complete information regarding this opportunities.

Broiler Delivery Date

Broilers purchased in conjunction with the 2016 LCJLS will be delivered from the Extension office on the afternoon of **Tuesday**,

Please contact the Extension office should there be any questions regarding your planned participation in the 2016 Lee County Junior Livestock Show.

All 4-H members/parents are invited to attend the meeting of

**Lee County
4-H Council**
and
**Parent Volunteer
Association**

January 7 — 6 pm
Extension Office, Giddings

RSVP by noon that day.

Sheep & Goat Clinic

FREE



January 9
and/or
February 6
10 am



LCJLS Show Barn
West Hwy 290, Giddings

- Hands-On Showmanship
- Bring your animal
- All exhibitors welcomed !

Swine

showmanship Clinic

January 17
1 pm – 3 pm

Jeff Shows' Residence
3971 CR 430, Dime Box



- **DON'T** bring your show hog.
- **DO** bring show whip or pipe.

RSVP to each Clinic by JANUARY 7 — 979-542-2753

And the Winners are !!

The Lee County 4-H Parent Volunteer Association (PVA) sponsored two recent events:

- **Walk Across Texas!**
- **Fall Fundraising**

Walk Across Texas! was an initiative announced at the beginning of the school year. From September 1, for 8 weeks, 4-H members and family members were encouraged to get out and start walking, tracking their progress online.

PVA was able to recognize the **"Top Three 4-H Walkers"** with gift cards to Academy Sports + Outdoors. The **"Top Three 4-H Walkers"** were Carlie Weiser, Kolton Allen and Colby Wagner.

County-wide, top walkers were:

- Parent** Robin Burris 449 miles
- 4-H Member** Carlie Weiser 421 miles

- Parent** Melissa Wagner 371.7
- 4-H Member** Kolton Allen 286 miles
- 4-H Member** Colby Wagner 253.5 miles

Thanks to all who participated. You're encouraged to keep moving !

Fall Fundraising includes both the Fried Chicken Dinner and the Pecan/Poinsettia Sale. Points are awarded to 4-H households based on FCD tickets sold, merchandise sold, and volunteer hours in assisting with each event. The **"Top Twenty"** fundraisers receive cash rewards.

Each **"Top Twenty"** household receives \$25. № 1 receives an additional \$100. № 2 receives an additional \$75. № 3 receives an additional \$50. № 4 receives an additional \$25.

The **"Top Twenty"** were:

- Tanner & Whitney Whitsel — 1st Place

- Jenna Kieschnick — 2nd Place
- Crystal Colley — 3rd Place
- Haileigh & Karleigh Blansit — 4th Place
- Allison Lee
- Colby Wagner
- Reagan Hinze
- Jordan & Logan Marek
- Carlie Weiser
- Nathanael Clifford
- Bayley & Daylin Pitts
- Kylee Ricketson
- Amanda & Hannah Zgabay
- Kolton Allen
- Johnathan Kieschnick
- Kailey Burgdorf
- Toye & Wyatt Walther
- Dilyn Kieschnick
- Idalia Warren
- Ehren Mitschke

Big Time in D9

April 29 & 30 — Lone Star College, Conroe

Lee County is one of the 18 counties that make up District 9. District Roundup is open to all ages of 4-H members, ages 8 to 18.



CONTACT AN EXTENSION AGENT, BY MARCH 15, IF YOU'RE INTERESTED IN COMPETING.

4-H Pit Master — Burger, Beans, Brisket, Spare Ribs and Chicken.
Teams must provide their own electricity/water.

4-H SET: — 4-H'ers apply scientific method to their 4-H project
[Research Poster Contest] experience

Ag Products ID — 4-H'er identifies 20 ag products, each with a multiple choice question pertaining to the product

Consumer Decision Making — apply knowledge and experience in consumer education by analyzing consumer situations

Duds to Dazzle — redesign and re-purpose discarded garments into new, viable consumer products

Ed Presentations/ Public Speaking — planned talks where 1 or more 4-H'ers teach others about a project or activity

Fashion Show — exhibit skills of wardrobe selection, clothing construction or comparison shopping, fashion interpretation. style, good grooming and poise in front of others, modeling and presentation

Fashion Story Board — poster board display of original designs using illustrations, such as fabric swatches, patterns and photos

Food Challenge — demonstration of culinary knowledge and skill

Food Show — showcase culinary skills, including presentation and interview; participate in 1 of 4 categories

Healthy Lifestyles — competitive event utilizing knowledge/skills gained through participation in 4-H Healthy Lifestyles programs

Leaders 4 Life — designed to challenge county 4-H council teams in leadership skills, parliamentary procedure and service learning

Photography — demonstrate skills in composition, light, story line, posing and awareness

Photography Judging Contest — understand the dynamics of a judging contest; determine placings and cuts, pair switching, and simple bust

Pinewood Derby — derby competition among fellow 4-H members, with a final race staged at the Award Assembly

Produce Judging — participants recognize unripe or over ripe produce, discern consistency in produce classes and detect blemishes on produce.

Quiz Bowls — demonstrate critical-thinking abilities and reasonings

- Beef
- Food & Nutrition
- Horse
- Swine

Robotics Challenge — teams of three to five members supply their own challenge equipment; teams will have three hours to design, build, program and test their robot in preparation for competition

Share the Fun — individual or team performance in 1 of 7 categories

- Celebrate 4-H
- Choreographed Routine
- Musical/Instrumental
- Solo/Band Performance
- Poetry/Prose
- Vocal
- Dramey

Wildlife Challenge — demonstration of appreciation and understanding of the natural world with emphasis on sports fishing, hunting/wildlife, forestry, entomology and wildlife habitat evaluation program

Multi-District Horse Judging

April 16 — Texas A&M Campus, College Station

Horse Judging — increase knowledge of Equine evaluation and selection techniques, employ decision making skills, create a sense of team work.

District Judging Contests

(Livestock, Meats, Soil)

April 23 — Texas A&M Campus, College Station

Livestock Judging — increase knowledge of livestock evaluation and selection techniques, better understand breeding concepts and use of analytical tools such as EPDs

Meats Judging & ID — learn to identify and evaluate meat cuts of beef, swine and sheep, critically evaluate with written reasons, learn to work as a team in accomplishing shared goals

Soil Judging — teach youth to identify different soil types and understand their characteristics, deepen an appreciation for value of soil and it's conservation