



## Overview of 4-H Wool and Mohair Judging Program

Reid Redden, PhD  
Sheep and Goat Specialist  
Associate Professor



---

---

---

---

---


---

---

---

### Goals

- ⊗ Tests a 4-H members knowledge and ability to determine the grade, rank, and categorize mohair.
- ⊗ Provide an opportunity for youth to compete in agricultural field
- ⊗ Develop skills that can be used on an wool sheep or angora ranching operation, within the wool or mohair industry, or agricultural teaching field.



---

---

---

---

---


---

---

---

### History

- ⊗ Historically, Texas sheared the most domestic wool & mohair
- ⊗ 50+ Years of Judging Program
- ⊗ "Judging Wool and Mohair"  
    Authored by Jack Groff and George Alschwede



---

---

---

---

---

---

---

---

### General Information

- ⊙ 4H - Divisions
  - + Junior: 8 - 10 years old
  - + Intermediate: 11 - 13 years old
  - + Senior: 14 - 18 years old
- ⊙ Teams
  - + 1 to 4 Team Members
  - + 3 Highest Scores
  - + Individuals Recognized



---

---

---

---

---

---

---

---

### 4-H Wool Contests

- ⊙ San Antonio Stock Show (February)
- ⊙ San Angelo Stock Show (February)
- ⊙ Houston (March)
- ⊙ Invitational (April - June)
  - + Crockett, Kendal, Schleicher, West Texas, Valley, Sonora, Kerr, Val Verde
- ⊙ District (April)
  - + 10 - Junction
  - + 6/7 - San Angelo
- ⊙ State (June) - College Station
- ⊙ National (June) - Sonora



---

---

---

---

---

---

---

---

### 4-H Mohair Contests

- ⊙ San Angelo Stock Show (Feb)
- ⊙ Invitational (April - June)
  - + Crockett, Kendal, Schleicher, Sonora, Kerr, Val Verde
- ⊙ District (April)
  - + 10 - Junction
  - + 6/7 - San Angelo
- ⊙ State (June) - College Station



---

---

---

---

---

---

---

---

### Qualifying

- ⊗ State - Roundup
  - ✦ Top 3 Senior Teams in District Contest
- ⊗ National 4H and FFA
  - ✦ Top 2 Teams in State Contest
  - ✦ Participation in National Disqualifies from Future Contests
  - ✦ Other states may send team



---

---

---

---

---

---

---

---

### Our Program

- ⊗ Our Contests
  - ✦ State and National
- ⊗ Provide Wool and Mohair with Officials
  - ✦ District Contests, at request
  - ✦ Supply Contests to Invitational Contests
- ⊗ Provide Mohair Samples (Exchange)
  - ✦ Sample collect at Sonora Warehouse
- ⊗ Sell Wool Fleeces (\$20/fleece)
  - ✦ Tied and Graded



---

---

---

---

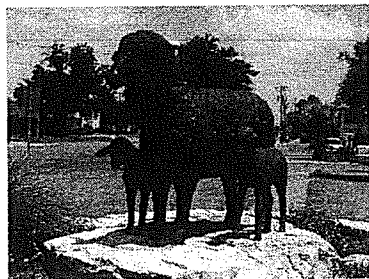
---

---

---

---

### Questions



---

---

---

---

---

---

---

---

Texas 4-H Wool Judging Rules – Revised 2016

1. Teams may consist of four members, with the scores of the three high members making the team score. The low scoring member of each team will automatically become the alternate. In the event of a team score tie, the score of the alternate will determine the team placing.

2. Fleece Evaluation of Grading Rail

Contestants will receive 4 points for full credit for each correct wool grade selected. If contestants select a wool grade that is one blood grade off, they will receive 2 points. Contestants will receive 2 points for each staple length category correctly answered. If a contestant misses the official, no points will be awarded. The use of any measuring device will be prohibited; this includes markings on hands, clipboards, or anything else. If you are caught with a measuring device or mishandling fleeces the contestant will be disqualified. The categories for wool grade and length will be as follows:

Table 1: Wool Grades and Length Standards

Wool Grades			Staple Lengths		
Blood	Spin Count	Average Diameter (Microns)	Staple	French Combing	Clothing
Fine	64s, 70s, 80s	22.04 and finer	>3.00"	3.00"-2.00"	<2.00"
Half	60s and 62s	22.05-24.94	>3.25"	3.25"-2.25"	<2.25"
3/8	56s and 58s	24.95-27.84	>3.50"		<3.50"
1/4	54s and 50s	27.85-30.99	>4.00"		<4.00"
Low 1/4	48s and lower	31.00 and coarser	>4.00"		<4.00"

(Note there is no French for 3/8 and coarser)

3. Contestants will be required to select an actual percentage yield. If a contestant is within 4 points above or 4 points below the official percentage yield, they receive full credit of 4 points. If the constant is within 8 points above or 8 points below the percentage yield than they receive 2 points. If they are more than 8 points above or below they receive no points. There will be a box at the top of the scantron that will have a gauge for calling yield. Keep in mind that the average yield changes for the fineness of fleeces.

Table 2: Average and Normal Range of Clean Fleece Yields

Clean Fleece Yield (%)	Wool Grade Categories				
	Fine	Half	3/8	1/4	Low 1/4
Average (%)	50	55	60	65	65
Normal Range (%)	40-60	45-65	50-70	55-75	55-75

4. Placing and Reasons

Contestants will place the four fleeces within a class and fleece quality questions will be asked for each class. For questions it is important that contestants only use one number for each description. Officials have the option of giving credit for more than one answer if a particular description matches another fleece. The placing of the class is worth 50 points and the questions are worth 50 points as well.

5. District contests will consist of a minimum of 20 fleece rail for a total score of 200 points. There will be 2 classes at District contests worth 200 points. For a total possible score of 400 points individually or a total possible score of 1200 points as a team.
6. Rotations for a 20 fleece rail will consist of two, 15 minute rotations. Contestants will have 15 minutes to complete each class.
7. State and National contests will consist of a 30 fleece rail for a total score of 300 points. There will be 4 classes at the State and National levels for a score worth 400 points. For a total possible score of 700 points individually or a total possible score of 2100 points as a team.
8. For the State and National contests the 30 fleece rail will be split into two, 15 fleece rails. Each half of the rail, contestants will receive two 15-minute rotations for a total time of one hour on the rail. If contestants start on the rail they will complete both halves of the rail before starting on classes. The classes will be broken into four, 15 minute rotations for a total time of one hour on classes.

#### National Wool Contest

1. A maximum of two teams may enter from each state with selection of teams to be made by each 4-H/FFA office. Entries must be submitted listing team member's ages, birthdays, county, state, and coach to the contest coordinator.
2. Contestants must be eligible to compete as senior 4-H members in their respective state contest the year of this contest. Students must not be enrolled in college prior to their local state contest.
3. All team members will be ineligible for future participation in the contest.