

# Texas Cattle Inventory

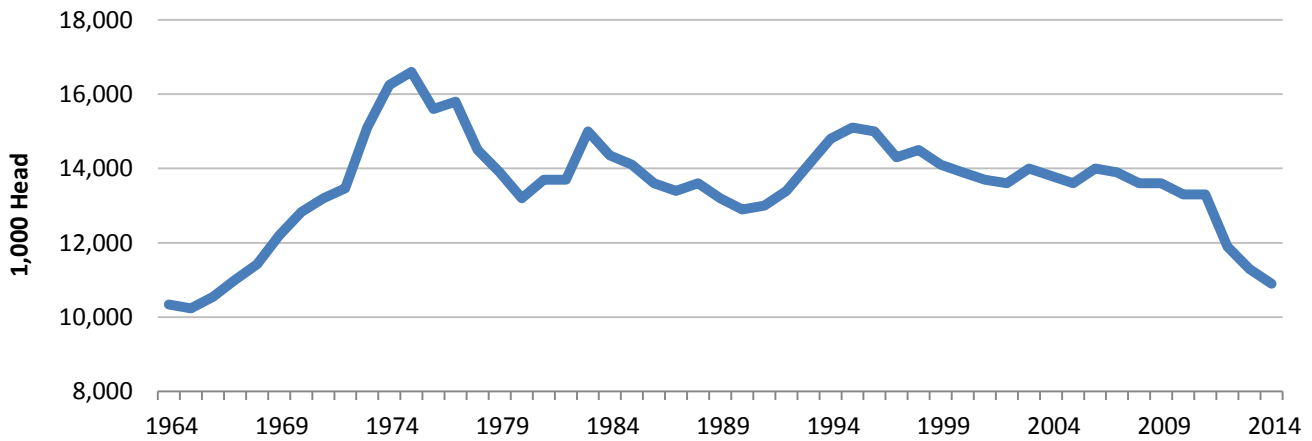
Issue No.: PR-106-14, January 31, 2014

Texas Field Office, Post Office Box 70, Austin, Texas 78767 · 800-626-3142 · [www.nass.usda.gov/tx](http://www.nass.usda.gov/tx)

Contact: Carol Pittman or Jason Hardegree

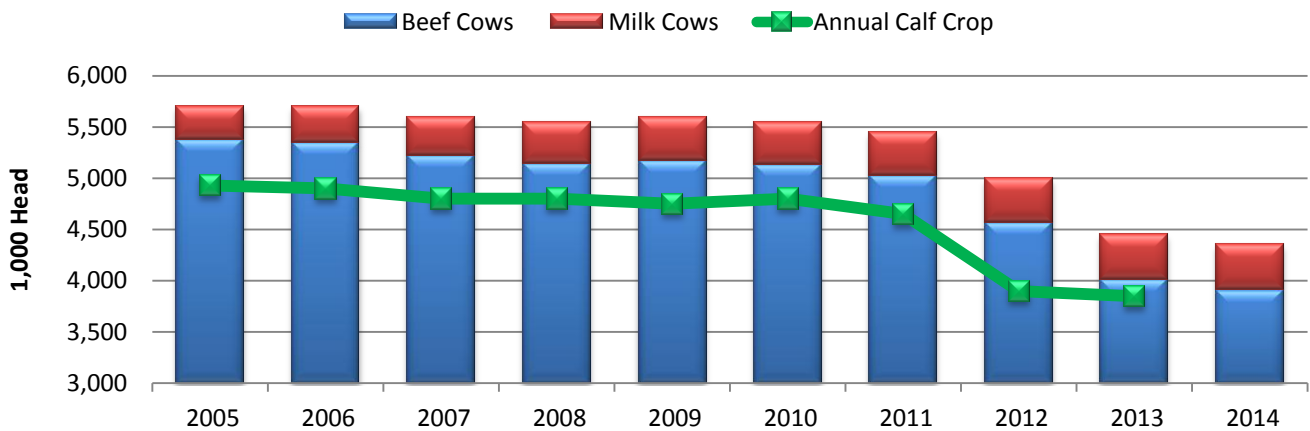
The inventory of Texas cattle and calves totaled 10.9 million head on January 1, 2014, down 4 percent from last year's inventory. This is the lowest January 1 inventory total since 1966. Texas continues to rank first in the nation in total number of cattle and calves with 12 percent of the total United States inventory.

## Texas All Cattle Inventory



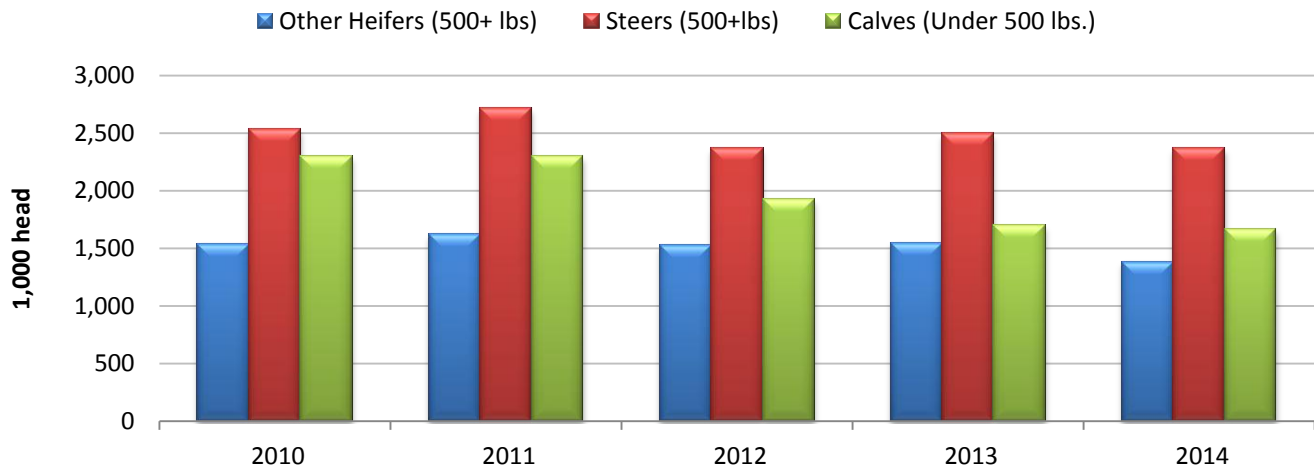
Total inventory of all cows that have calved was 4.35 million head, 2 percent below last year's total. Beef cow inventory, at 3.91 million head, was down 3 percent from 2013. Milk cow inventory, at 440 thousand head, was up 5 thousand head from the 2013 total of 435 thousand head.

## Texas Cow Inventory and Calf Crop



Inventory of all heifers 500 pounds and over in Texas totaled 2.24 million on January 1, 2014, 5 percent below 2013. Beef replacement heifers, at 640 thousand head, is 7 percent higher than 2013. Milk replacement heifers totaled 220 thousand head, up 10 percent from last year.

### Texas Feeder Cattle Supply



Texas inventory of steers 500 pounds and over totaled 2.37 million head on January 1, 2014, down 5 percent from last year. Inventory of calves less than 500 pounds, at 1.66 million head, is 2 percent below last year's total. The 2013 calf crop totaled 3.85 million head, 1 percent lower than the 2012 calf crop.

### Texas Cattle Inventory and Calf Crop

Item	2012	2013	2014	Percent of Previous Year
	<i>1,000 head</i>	<i>1,000 head</i>	<i>1,000 head</i>	<i>percent</i>
All Cattle and Calves.....	11,900	11,300	10,900	96
Cows & Heifers that have calved .....	5,000	4,450	4,350	98
Beef Cows .....	4,565	4,015	3,910	97
Milk Cows .....	435	435	440	101
Heifers 500 pounds and over .....	2,280	2,350	2,240	95
Beef Replacement .....	550	600	640	107
Milk Replacement .....	210	200	220	110
Other Heifers .....	1,520	1,550	1,380	89
Steers 500 pounds and over .....	2,370	2,500	2,370	95
Bulls 500 pounds and over .....	330	300	280	93
Calves under 500 pounds.....	1,920	1,700	1,660	98
Calf Crop .....	3,900	3,850		99

**U.S. Highlights:** The United States inventory of all cattle and calves totaled 87.7 million head on January 1, 2 percent below last year's inventory of 89.3 million head. This is the lowest January 1 inventory of all cattle and calves since the 82.1 million on hand in 1951.

All cows and heifers that have calved totaled 38.3 million head, down 1 percent from the 38.5 million on January 1, 2013. This is the lowest January 1 inventory of all cows and heifers that have calved since the 36.8 million head in 1941. Beef cows totaled 29.0 million head, down 1 percent from a year ago, while milk cows were down slightly from a year ago at 9.21 million head.

Beef replacement heifers, at 5.47 million head, were up 2 percent from the previous year. Milk replacement heifer numbers were down slightly to 4.54 million head. The 2013 calf crop was estimated at 33.9 million head, down 1 percent from 2012.

### United States Cattle Inventory and Calf Crop<sup>1</sup>

Item	2012	2013	2014	Percent of previous year
	<i>1,000 head</i>	<i>1,000 head</i>	<i>1,000 head</i>	<i>percent</i>
All Cattle and Calves .....	90,769	89,300	87,730	98
Cows & Heifers that have calved .....	39,387	38,515	38,251	99
Beef Cows .....	30,158	29,297	29,042	99
Milk Cows .....	9,230	9,218	9,209	100
Heifers 500 pounds and over .....	19,338	19,134	18,751	98
Beef Replacement .....	5,262	5,381	5,471	102
Milk Replacement .....	4,622	4,551	4,539	100
Other Heifers .....	9,454	9,203	8,741	95
Steers 500 pounds and over .....	15,833	15,813	15,415	97
Bulls 500 pounds and over .....	2,096	2,056	2,035	99
Calves under 500 pounds .....	14,115	13,782	13,278	96
Calf Crop .....	34,279	33,930		99

<sup>1</sup> Totals may not add due to rounding

*A random sample of U.S. producers was surveyed to provide data for these estimates. Survey procedures ensured that all cattle producers, regardless of size, had a chance to be included in the survey. Large producers were sampled more heavily than small operations. Data were collected during the first half of January by mail, telephone, and face-to-face personal. Regardless of when operators responded, they were asked to report inventories as of January 1.*

*NASS provides accurate, timely, useful and objective statistics in service to U.S. agriculture. The Agency invites you to express your thoughts and provide occasional feedback on our products and services by joining a data user community. To join, sign in at <http://usda.mannlib.cornell.edu/subscriptions> and look for "NASS Data User Community".*

Link to the US report: <http://usda.mannlib.cornell.edu/MannUsda/viewDocumentInfo.do?documentID=1017>

Link to USDA-NASS website: [www.nass.usda.gov/index.asp](http://www.nass.usda.gov/index.asp)