

Plains Pest Management News

August 4, 2011

Volume 1, Issue 7

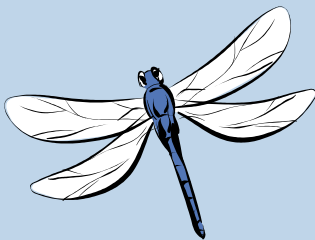


Inside this issue:

Cotton

Corn

Sorghum



Cotton

Cotton continues to progress under our hot, dry conditions. Irrigation continues to attempt to meet demands but is often short. Cotton ranges from three nodes above white flower to nine nodes, with many fields in the 4.5 to 6.5 nodes above white flower.

Overall cotton insects such as cotton bollworm, beet armyworm and Lygus bugs remain light. Two-spotted mites are occasionally observed, but have not reached economic levels at this time. Beneficials remain at good levels considering the lack of pest populations. Crab spiders, big eyed bugs, pirate bugs, red cross beetles and damsel bugs are commonly found in beat sheet samples.

Corn

Corn ranges from knee high to 100 dent, with the moisture line 25% down. Most fields are in late soft dough to early dent. Based on crop maturity we should have an early harvest this year.

Sorghum

Sorghum like other crops continues to struggle in this heat. Sorghum ranges from late whorl to heading. Continue to scout for fall armyworm and corn earworm in

headed sorghum. No sorghum midge have been reported at this time, but this is a pest to scout for during the bloom period.

Banks grass mites continue to be the dominate pest in area corn. Damage has ranged from a few scattered colonies to 100% leaf damage in the lower one-third of the plant. Damage has been much more evident in drought stressed fields. In these fields spider mite predators have often not been able to keep up with mite reproduction, which required use of a miticide. Again this week the most common predators feeding on mite colonies have been six spotted thrips and spider mite destroyer ladybeetles. Other predators observed have been pirate bug nymphs, lacewing larvae and occasionally banded thrips.

Corn earworm infestations are common in ear-tips of corn. Since most fields are Bt corn, damage remains light. A few fall armyworm egg masses have been observed, but significant infestations have not been observed.



Texas AgriLife Extension Service

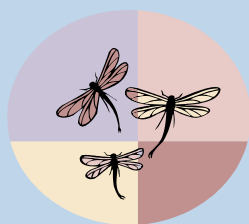
Hale County Office
225 Broadway, Suite 6
Plainview, Texas 79072

Tel. 806.291.5274

Fax 806.291.5266

E-Mail: gcronholm@ag.tamu.edu

Greg Cronholm,
Extension Agent—IPM
Emeritus



We're on the
Web
Hale-tx.tamu.edu



INTEGRATED PEST MANAGEMENT IN HALE & SWISHER COUNTIES