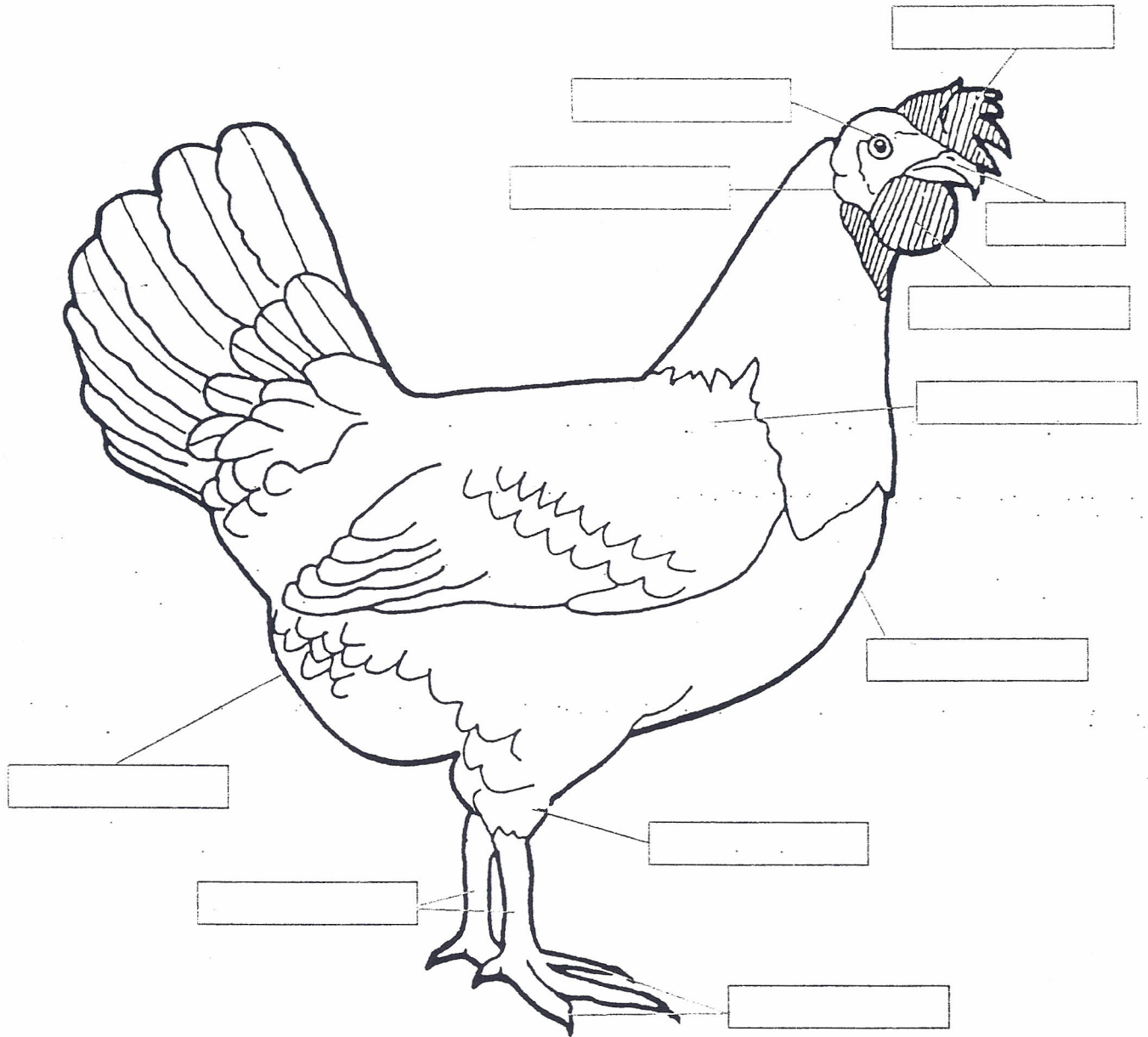


# Parts of a Chicken

Color and label the parts of a chicken.



Use each word only once:

beak  
eye  
toes

breast  
hock  
vent

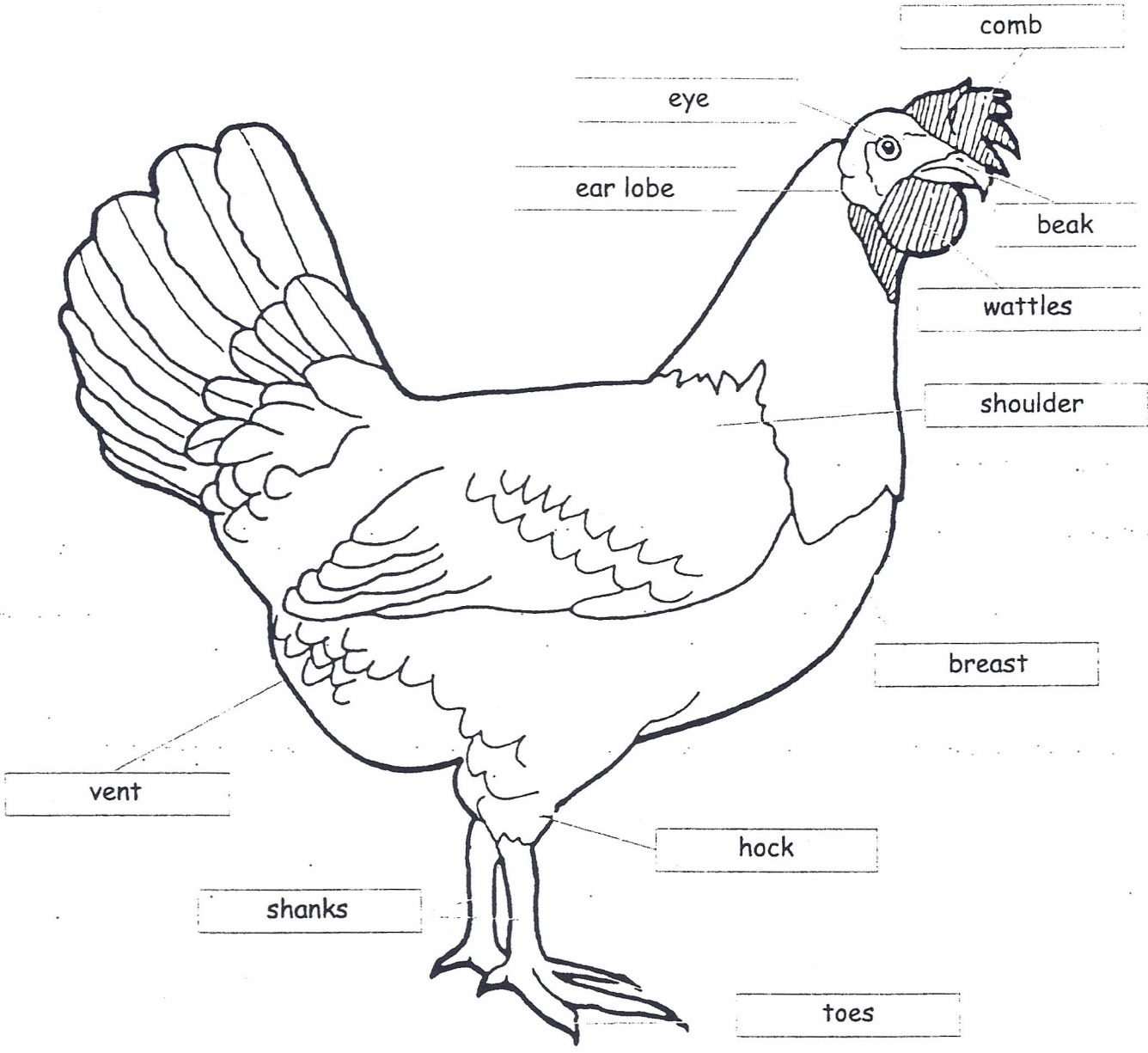
comb  
shanks  
wattles

ear lobe  
shoulder

**KEY**

# Parts of a Chicken

Color and label the parts of a chicken.



Use each word only once:

- |      |        |         |          |
|------|--------|---------|----------|
| beak | breast | comb    | ear lobe |
| eye  | hock   | shanks  | shoulder |
| toes | vent   | wattles |          |