

MID-COAST IPM NEWS

Calhoun

Refugio

Victoria

Stephen Biles
Extension Agent-IPM
186 CR 101 • P.O. Box 86
Port Lavaca, TX 77979

Office: 361-552-3324 • Mobil: 361-920-1138

E-mail: biles-sp@tamu.edu

Website: <http://ipm.tamu.edu>

or <http://calhoun-tx.tamu.edu>

Volume 2, No. 13

August 22, 2006

Harvest Aid Demonstration Meeting

Date: Friday, August 25

Time: 8:00 a.m.

Location: The first cotton field South of Placedo on the Old Port Lavaca Road, across Hwy 87 from Lander Road.

Purpose: To view 16 harvest aid treatments.

Cotton

Cotton harvest is well underway. The ratings from the Calhoun County Cotton Defoliation Trial are attached. Another defoliation trial was initiated on 16 August in Victoria County.

Soybeans

Several Calhoun County fields of late planted soybeans are exhibiting symptoms of Flat Pod Syndrome. I have been told that a few fields in Victoria County are also affected. These fields are similar in their late planting date and other factors are being evaluated.

Although nothing has been positively identified as the cause for flat pod syndrome various causes of this problem have been suggested. While some experts have implicated stink bugs as the primary cause for flat pods, I don't think that a stink bug infestation can cause damage that is this extensive destroying every pod on every plant in an entire field. Possible causes may involve stink bugs as a vector of a virus or other pathogen. If stink bugs are found to vector such a pathogen, this could greatly alter economic thresholds. However, the recommended treatment threshold for stink bugs remains 36 stink bugs per 100 sweeps or 1 per row foot when using a beat sheet.

I conducted three insecticide trials for stink bug control in soybeans this year. The results of these trials indicate that control of the red banded stink bug (*Pezodorus guildinii*) can be achieved with ***Orthene (Acephate 90)** or Pyrethroids. The tested pyrethroids included **Karate** with **Zeon**, **Mustang Max** and **Baythroid XL**.

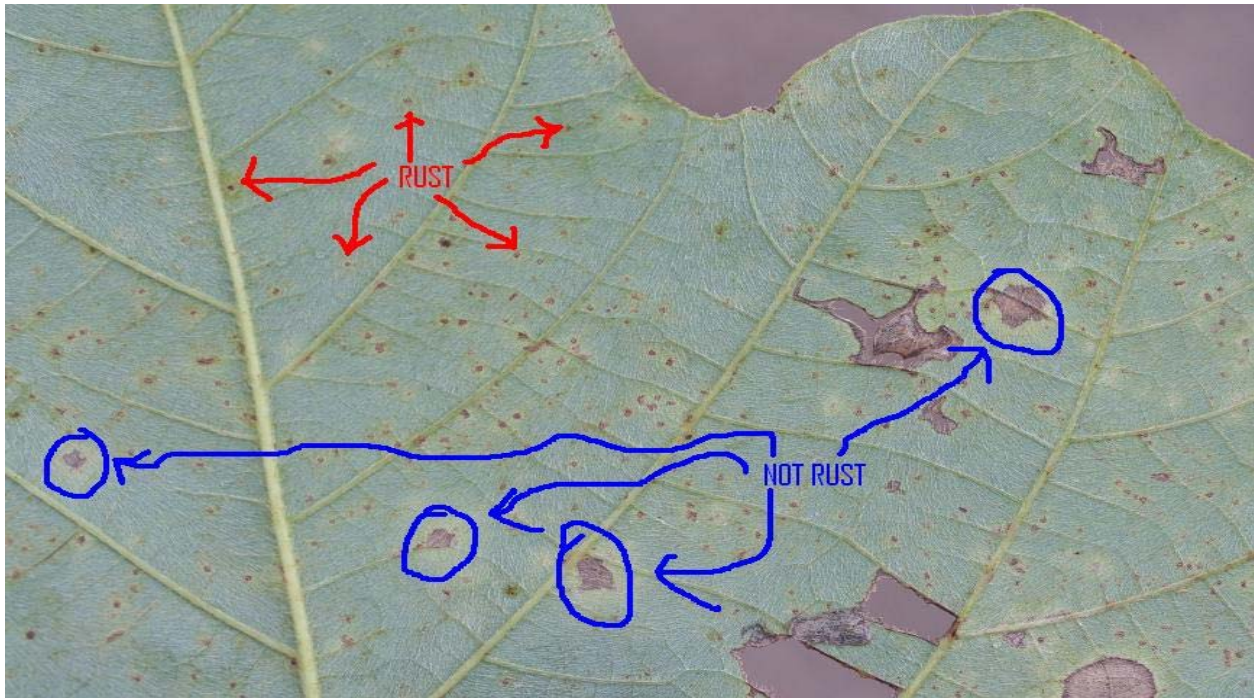
If you have a field that is staying green or has flat pods that are not filling I would like to see the field. Please call me as 920-1138.

From Dr. Tom Isakeit

The infamous kudzu patch near Dayton (Liberty County) has rust again. The incidence is about 90% of leaves in a small area that I examined. There are about 5-200 pustules per leaflet, in very small lesions. Many of the pustules were not well-developed, but the amount of sporulation improved with overnight incubation.

Texas Cooperative Extension - IPM

Attached is a photo of the typical lesions. The larger lesions on the leaves were Cercospora.



It was the last stop of the day and I was rained out before I could check out more of the patch. I was last out here in mid-July and didn't see anything. The county agent has been checking it more frequently since then.

There were periodic showers in the area over the past two weeks.

I checked out two soybean fields in the county and there was no evidence of rust. I also checked out kudzu in Livingston (Polk County) to the north of Dayton and in Newton County (borders Louisiana), as well as the sentinel soybeans in Beaumont. There was no evidence of rust in these locations.

We will be monitoring commercial soybeans in Liberty County over the next week. The group 5 soybeans I saw were well beyond any sort of yield loss risk, but the group 7 soybeans still had a ways to go. If the weather changes (gets cooler and wetter) in about a month, there may be a risk. We will monitor this.

We will also scrutinize more of the kudzu patch. I don't know whether the spores blew in, or whether there was a low level of survival from last year that became apparent only recently.

Publications on Stink Bug Identification and Asian Soybean Rust ID are available at:

<http://calhoun-tx.tamu.edu/Publications.cfm>



Visit us on the web at:

<http://www.tpma.org/>

Some supporters of YOUR IPM Program are:

Hlavinka Equipment Company

Moreman Community Gin

South Texas Cotton & Grain

Farmer's Coop of El Campo

Vanderbilt Farmer's Coop, Inc.

Danevang Farmer's Coop, Inc.

Helena Chemical Company

Please show your appreciation to these great organizations.

DISCLAIMER CLAUSE: Trade names of commercial products used in this report are included only for better understanding and clarity. Reference to commercial products or trade names is made with the understanding that no discrimination is intended and no endorsement by the Texas A&M University System is implied. Readers should realize that results from one experiment do not represent conclusive evidence that the same response would occur where conditions vary. The herbicide label is the final authority for how a product can be used safely and provides the manufacturer's instructions and precautions. Read and follow the pesticide label.

Texas Cooperative Extension

Calhoun Defoliation Trial 2006

Trial ID:	Study Dir.:
Location:	Investigator: Robert Lemon

Rating Data Type	DEFOLI %	DESICC %	GRNLEAF %	DEFOLI %	DESICC %	GRNLEAF %	TRGRW %	BRGRW %		
Rating Unit	Aug-09-06	Aug-09-06	Aug-09-06	Aug-15-05	Aug-15-05	Aug-15-05	Aug-15-05	Aug-15-05		
Rating Date	7 DAT	7 DAT	7 DAT	13 DAT	13 DAT	13 DAT	13 DAT	13 DAT		
Trt-Eval Interval										
Trt Treatment	Cost	Rate								
No. Name	Cost	Unit Rate Unit								
1 Dropp SC	4.00 \$	1.6 OZ/A	80.0	10.0	10.0	95.0	1.0	4.0	0.0	5.0
2 Dropp SC	6.00 \$	2.4 OZ/A	77.0	8.0	15.0	97.0	0.0	3.0	0.0	5.0
3 Dropp SC	4.00 \$	1.6 OZ/A	73.0	25.0	2.0	88.0	10.0	2.0	0.0	10.0
Ginstar	5.04 \$	3 OZ/A								
4 Dropp SC	5.00 \$	2 OZ/A	70.0	25.0	5.0	93.0	5.0	2.0	0.0	10.0
Finish 6 Pro	13.68 \$	24 OZ/A								
5 Dropp SC	4.00 \$	1.6 OZ/A	65.0	30.0	5.0	92.0	5.0	3.0	0.0	10.0
Def	3.52 \$	8 OZ/A								
6 Dropp SC	4.00 \$	1.6 OZ/A	72.0	20.0	8.0	95.0	3.0	2.0	0.0	5.0
ESO	1.65 \$	8 OZ/A								
7 Untreated			0.0	0.0	100.0	20.0	0.0	80.0	100.0	20.0
8 Dropp SC	4.00 \$	1.6 OZ/A	60.0	30.0	10.0	88.0	8.0	4.0	0.0	20.0
Prep	7.92 \$	24 OZ/A								
AMS	1.98 \$	9 LB/100 GAL								
9 Dropp SC	4.00 \$	1.6 OZ/A	72.0	25.0	3.0	90.0	8.0	2.0	0.0	15.0
Prep	7.92 \$	24 OZ/A								
AMS	4.18 \$	19 LB/100 GAL								
10 Ginstar	6.72 \$	4 OZ/A	82.0	15.0	3.0	88.0	10.0	2.0	0.0	20.0
Finish 6 Pro	11.97 \$	21 OZ/A								
11 Aim	1.45 \$	1 OZ/A	65.0	20.0	15.0	92.0	6.0	2.0	0.0	10.0
Dropp SC	4.00 \$	1.6 OZ/A								
NIS	0.53 \$	0.25 % V/V								
12 ET	4.05 \$	1.5 OZ/A	74.0	25.0	1.0	82.0	15.0	3.0	0.0	15.0
Dropp SC	4.00 \$	1.6 OZ/A								
COC	0.84 \$	1 % V/V								
13 Resource	7.58 \$	6 OZ/A	72.0	25.0	3.0	90.0	8.0	2.0	0.0	10.0
Dropp SC	4.00 \$	16 OZ/A								
COC	0.84 \$	1 % V/V								
14 Freefall	4.00 \$	1.6 OZ/A	60.0	20.0	20.0	90.0	3.0	7.0	0.0	5.0
15 Freefall	4.00 \$	1.6 OZ/A	65.0	25.0	1.0	82.0	15.0	3.0	0.0	15.0
FirstPick	6.08 \$	32 OZ/A								
16 Freefall	4.00 \$	1.6 OZ/A	83.0	15.0	2.0	85.0	12.0	3.0	0.0	10.0
FirstPick	9.12 \$	48 OZ/A								
17 Freefall	4.00 \$	1.6 OZ/A	80.0	8.0	12.0	88.0	2.0	10.0	0.0	10.0
SuperBoll	15.68 \$	16 OZ/A								
18 FirstPick	9.12 \$	48 OZ/A	78.0	20.0	2.0	88.0	10.0	2.0	0.0	15.0
Ginstar	5.04 \$	3 OZ/A								
19 Ginstar	6.72 \$	4 OZ/A	82.0	15.0	3.0	90.0	8.0	2.0	0.0	15.0
20 Ginstar	8.40 \$	5 OZ/A	77.0	20.0	3.0	86.0	12.0	2.0	0.0	5.0
21 Redi-Pik		4 OZ/A	77.0	20.0	3.0	88.0	10.0	2.0	0.0	10.0
22 Redi-Pik		5 OZ/A	77.0	20.0	3.0	90.0	8.0	2.0	0.0	15.0
23 ET	7.43 \$	2.75 OZ/A	74.0	20.0	6.0	88.0	5.0	7.0	20.0	40.0
COC	0.84 \$	1 % V/V								
24 Untreated			0.0	0.0	100.0	20.0	0.0	80.0	100.0	20.0

LSD (P=.10)
Standard Deviation CV