

### Grain sorghum

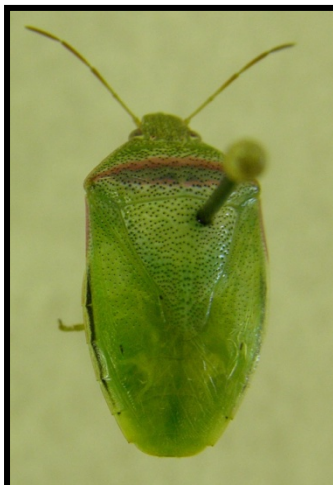
Much of the sorghum is nearing harvest but the later planted crop is still susceptible to insect pests. Midge populations have increased to treatable levels in some fields that are blooming. Rice stink bugs and headworms continue to infest fields that are in soft dough and milk stage.

### Soybeans

Stink bugs have been found at treatable levels in some soybean fields. These populations are dominated by the southern green stink bug with red-banded and brown stink bugs also being found. Economic threshold for stink bugs is 24-36 per 100 sweeps.



Southern Green Stink Bug



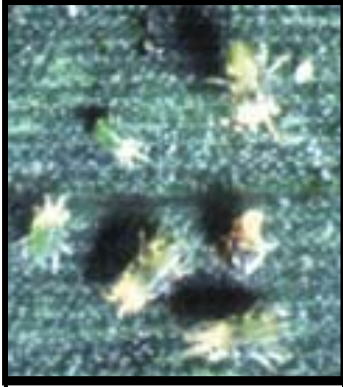
Red-banded Stink Bug



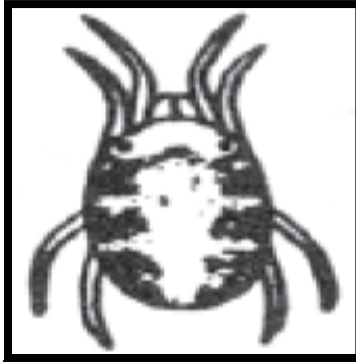
Brown Stink Bug

## Corn

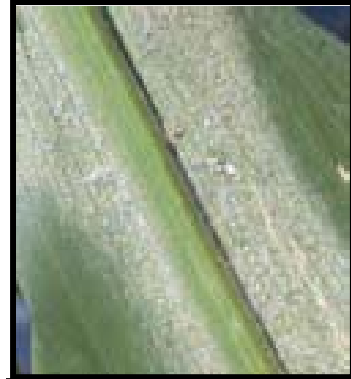
This past week I found banks grass mite in corn fields. While this mite can cause yield reductions, the populations we have are well below economic levels. In addition, most corn fields are beyond the damage window of most, if not all, insect pests.



Banks Grass Mites



Bank Grass Mite



Banks Grass Mites Colony



Two Spotted Spider Mite

## Cotton

The primary pest being found in cotton fields are seed feeding stink bugs and *Creontiades*. We are finding that many fields have more than 20% bolls with evidence of internal feeding by these pests and should be treated for stink bugs. The insecticide trial I conducted last year on *Creontiades* showed that the insecticides we tend to use for stink bug control will also control *Creontiades*. Thus, I currently think that the best way to scout for this pest is to cut bolls and look for internal feeding. This feeding will look the same as that of stink bugs and a 20% threshold will probably be sufficient until we study this pest further.

**Stephen Biles**  
**IPM Extension Agent**  
**186 County Road 101, Suite 1**  
**Port Lavaca, Texas 77979**

**Office: (361)552-3324**  
**Mobile: (361)920-1138**



**E-Mail: [biles-sp@tamu.edu](mailto:biles-sp@tamu.edu)**  
**Website: <http://ipm.tamu.edu>**