

*Improving Lives. Improving Texas.*

**INTEGRATED PEST MANAGEMENT NEWSLETTER**

**July 21, 2008**

**CALHOUN**

Stephen Biles  
IPM Extension Agent  
186 CR 101 – P.O. Box 86  
Port Lavaca, Texas 77979

**VICTORIA**

**REFUGIO**

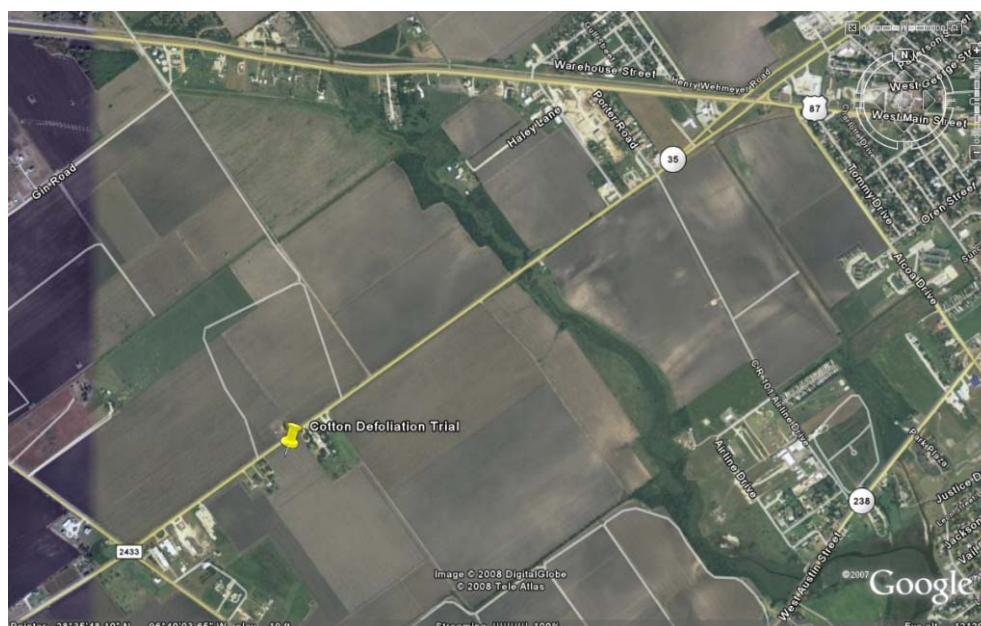
Office: (361)552-3324  
Mobil: (361)920-1138  
E-Mail: [biles-sp@tamu.edu](mailto:biles-sp@tamu.edu)  
Website: <http://calhoun-tx.tamu.edu>

**COTTON DEFOLIATION**

Field Meeting: Friday – July 25, 2008 @ 9:00 am

Location: Dennis Klump Farm - Near Port Lavaca on Hwy 35 South  
1/2 mile East of FM 2433 on South side of highway.

Below is a google earth picture of the field location.



**SOME OF YOUR SUPPORTERS FOR THE IPM PROGRAM**

Hlavinka Equipment Company	Moreman Community Gin
South Texas Cotton & Grain	Farmer's Coop of El Campo
Helena Chemical Company	Danevang Farmer's Coop, Inc
Sorghum Partners/Milo Genetics	Texas Soybean Board

## 2008 HARVEST AID EVALUATION

### Port Lavaca

Application Dates:

7/17/2008

Trt No.	Treatment Name	Rate	Rate Unit
1	Dropp SC	0.8	fl oz/a
2	Dropp SC	2.4	fl oz/a
3	Dropp SC	1.6	fl oz/a
4	Ginstar	3.0	fl oz/a
5	Ginstar	3.0	fl oz/a
	Crop Oil Concentrate	1.0	pt/a
6	Dropp SC	1.6	fl oz/a
6	Def	8.0	fl oz/a
7	Dropp SC	1.6	fl oz/a
7	Finish 6 Pro	16.0	fl oz/a
8	Ginstar	3.0	fl oz/a
8	Finish 6 Pro	16.0	fl oz/a
9	Dropp SC	1.6	fl oz/a
9	Def	8.0	fl oz/a
9	Finish 6 Pro	16.0	fl oz/a
10	Dropp SC	1.6	fl oz/a
10	Prep	16.0	fl oz/a
11	Dropp SC	1.6	fl oz/a
12	Dropp SC	1.6	fl oz/a
12	Non-Ionic Surfactant	0.25	% v/v
13	Dropp SC	1.6	fl oz/a
13	Crop Oil Concentrate	1.0	% v/v
14	Dropp SC	1.6	fl oz/a
14	ESO/MSO	3.0	fl oz/a
15	Dropp SC	1.6	fl oz/a
15	ESO/MSO & Surfactant Blend	4.0	fl oz/a
16	Dropp SC	1.6	fl oz/a
16	Organosilicone Surfactant	1.5	fl oz/a
17	Aim	1.0	fl oz/a
17	Crop Oil Concentrate	1.0	% v/v
18	ET	1.5	fl oz/a
18	Crop Oil Concentrate	0.5	% v/v
19	Dropp SC	1.6	fl oz/a
19	Ginstar	1.0	fl oz/a
20	Blizzard	0.5	fl oz/a
20	Crop Oil Concentrate	1.0	pt/a



Visit us on the web at  
<http://www.tpma.org/>