

<p>NEWSLETTER</p> <p>VOLUME 8, ISSUE 2</p> <p>March 6, 2012</p>	<p>Stephen Biles, EA-IPM 186 CR 101, Suite 1 PORT LAVACA, TX 77979 (361)552-3324; (361)920-1138 Biles-sp@tamu.edu http://ipm.tamu.edu</p>
--	---

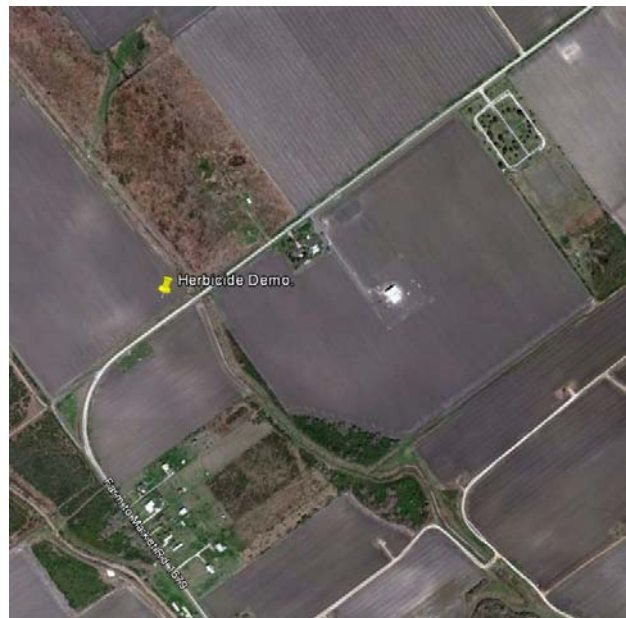
Chemical Herbicide Control of Henbit Field Meeting

At the request of a Calhoun County cotton grower, we sprayed several herbicides to demonstrate how well they control henbit. The demonstration is located on FM 1679 on the north side of the road, ½ mile south west of the cemetery.

I plan on being at the field **Monday, 6 March, at 9 am** to walk through the plots. The demo contains both fast and slow acting herbicides so this should be viewed on several dates over the next few weeks.

Below is a list of the treatments in the field. Each plot is marked with labeled stakes and flags.

	Treatment Name	Rate	Rate Unit	
1	Weedar 64 Agri-Dex	24 1 % v/v	oz/a	(2,4-D, 3.8 lb/gal)
2	Weedar 64 Agri-Dex	32 1 % v/v	oz/a	
3	Diuron Agri-Dex	16 1 % v/v	oz/a	(4 lb/gal)
4	Cornerstone Plus Agri-Dex	4 1 % v/v	oz/a	(Glyphosate)
5	Weedar 64 Cornerstone Plus Diuron Agri-Dex	16 24 16 1 % v/v	oz/a	
6	Cornerstone Plus Firstshot Weedar 64 Agri-Dex	48 0.6 16 1 % v/v	oz/a	
7	Cornerstone Plus Firstshot Aim Agri-Dex	48 0.6 0.5 1 % v/v	oz/a	
8	Gramoxone Inteon Agri-Dex	3 1 % v/v	oz/a	



Corn

Corn planting has begun and some fields already have emergence. Seed treatments should provide adequate control of chinch bugs.

Applied Research Projects

One of the primary goals of the IPM Program is to provide unbiased answers to the production problems faced by local farmers. To achieve this goal, I need your input. Contact me by phone or email with any topics you want to see investigated through applied research projects.

The current list of suggestions includes the following:

- 1) Stink bug management in grain sorghum.
- 2) Henbit control on pre-plant cotton fields.
- 3) Effect of water quality on herbicide efficacy; specifically the use of rainwater.

Contact me with ideas at 361-920-1138 or biles-sp@tamu.edu.