

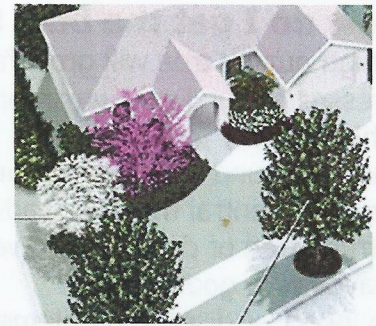
A Tree Planting Checklist for Texas Homeowners

Trees get big and live a long time so choosing what tree to plant in your yard is an important decision. The "right tree in the right place" can add value to your home, clean the air and help you save money on air conditioning, heating and water bills. The checklist below uses the online [Texas Tree Planting Guide](#) to help you to make the best choices about your new tree.

(Click on the picture for more info)

Where should I plant the tree?

Plant trees to shade your roof, walls, windows and air conditioner.
Shading the west and south sides of your house is best.
Plant flowering trees for accent and beauty.
Plant to screen undesirable views.
Plant fruit trees for edible fruit and to attract wildlife.
Plant recommended street trees to improve your neighborhood.



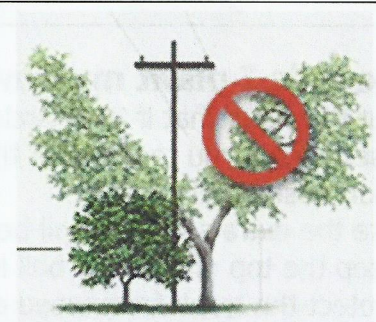
How much space will my tree need?

Small trees will need about 60 square feet.
Medium trees will need about 120 square feet.
Large trees will need about 180 square feet.



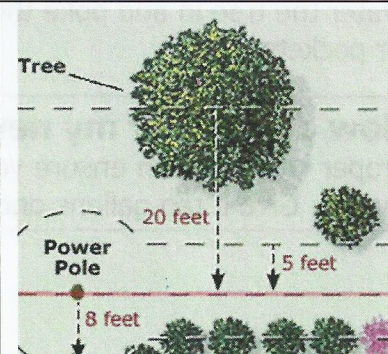
How can I avoid future problems?

Avoid:
Blocking visibility of traffic signs or street corners.
Planting trees too close together.
Planting too close to the house or chimney.
Planting trees that will get over 20 feet under power lines.
Encroaching on a neighbor or shading a garden.



How far should I plant from utility lines?

Plant canopy trees (25 feet or larger) at least 20 feet from power lines.
Plant only small trees (20 feet or smaller) within 5 feet of power lines and within 8 feet of power poles.



What tree is right for me?

Pick a tree that will grow to the desired size and does well in your area.

The [Texas Tree Planting Guide](#) website can help you pick your tree.

- Use the Express Selector to find the best four trees.
- Use the Custom Selector to choose a tree with the features you want.

If you see a tree that you may want to plant and want to learn its name, use [the Texas Tree ID website](#).

Texas Tree Planting Guide

HOME | MORE INFO

Choose option "5" in the Custom Tree Selector if your site "is extremely dry or droughty"

How do I get the best tree for my money?

A high quality tree will grow faster and is better able to take the stresses of our Texas environment.

A high quality tree has:

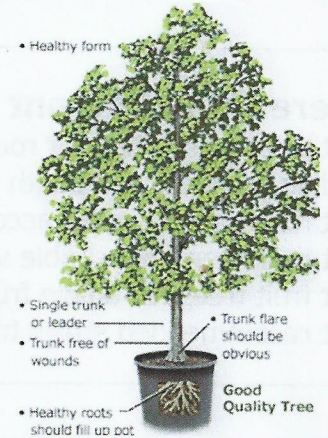
Enough sound roots to support healthy growth.

A single, central trunk or leader.

A trunk free of damage and wounds.

Leaves with good color.

No insect or disease problems.



How do I prepare the site?

If you need to, have utility lines located by calling 811 or other locate service.



Know what's below.
Call before you dig.

How do I plant my new tree?

Cut the roots that if they circle the container.

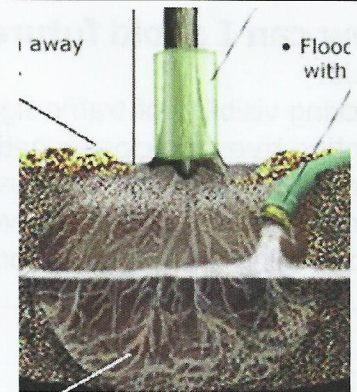
Use the soil you took out of the hole to fill in around the tree (don't use different soil)

Use the extra soil for a soil berm around the hole to hold water.

Keep the top of the root ball level with the ground.

Protect the trunk from weed eaters.

Water the tree in and poke the soil in the hole to get rid of any air pockets.



How do I water my new tree?

Proper watering can ensure your tree not only survives but thrives. Give it ten gallons once or twice a week for the first year.

Tree Watering Tips