



HIGH  
 PLAINS  
 IPM  
 Update

News about  
 Integrated Pest  
 Management in  
 Bailey, Castro,  
 and Parmer  
 Counties, from  
 John Thobe



Sept 11 , 2020

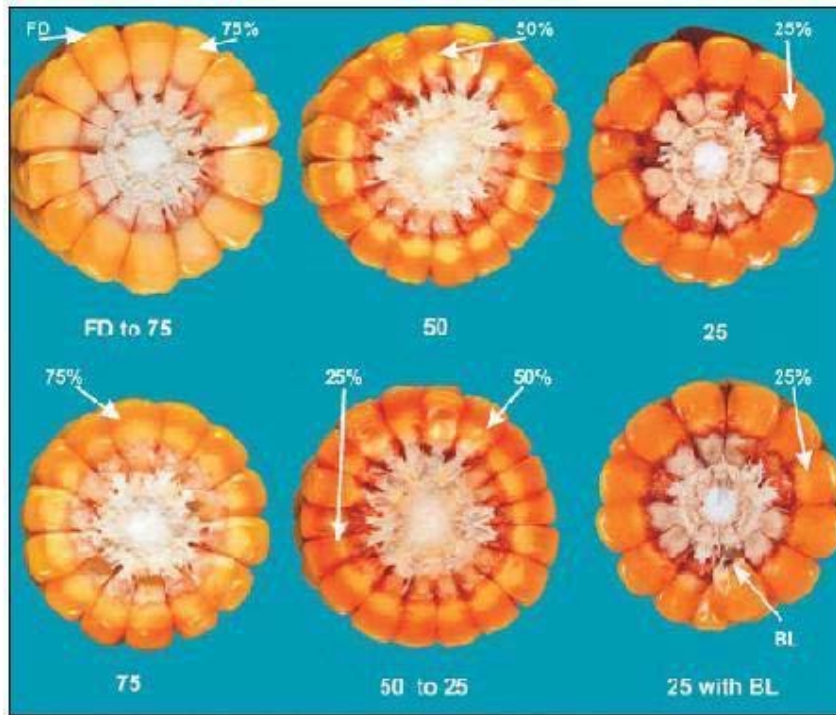
Vol 1 – No. 13



**High Plains Crop Update**

Starting to see a few more of these a little more regularly as they move up and out the plant moving into the middle of this month.

Looking like **Corn** silage is beginning to slow, still a few fields here and there that need to be taken care of. As we look at corn for grain we should be following moisture lines very closely to determine when to get in there with a combine, not a chopper.



I'm sure all of you have seen this before, but a good refresher never hurt. Looking for 20% moisture in a perfect world. Of course, as stated in earlier newsletters, looking at 75% to 50% dry down before silage harvest.

Keep up spidermite checks in late planted corn, and let me know if you have any questions!

Turning our attention now to **sorghum**, we have had spider mite issues in it as well. Consultants have been in contact with me about a few fields here and there in Northern Parmer. We did not see them too heavy in heat stressed and low water input fields. Same story with the Sugarcane Aphid, it seems SCA is more attracted to that lush high water input circles.

Still need to be keeping an eye on SCA levels as we inch closer to sorghum silage harvest. Below I have the 2019 Texas A&M AgriLife Bushland Forage Sorghum Silage Trial conducted by Dr. Jourdan Bell. This takes a look at 89 sorghum hybrids side by side for comparison, if any of you are wishing to try something new in the 2021 season. Link to follow.

[Click here](#)

Like to remind everyone to listen to our weekly IPM update, covering ten counties right here in the panhandle. You'll find the information on the left side of the page. Also follow Bailey County's Texas A&M AgriLife Extension page if you're a Facebooker.

Moving to **cotton** now, things are very quiet in the way of pests, and we are looking to harvest aid season coming up rapidly. Crack boll can now be seen in most of the fields as one drives by them. Always a good sight to see!

Half of Nematode samples are in for the second round of sampling. Wanted to share some results with everyone. As the first round of nematode sampling was done I noticed that Parmer and Castro for the most part were lacking in "alarming" nematodes such as root knot, reniform, and . As you can see most of these samples were taken in Bailey county as it has sandier soils and plays a better host to these threatening pests that reside in our soils.

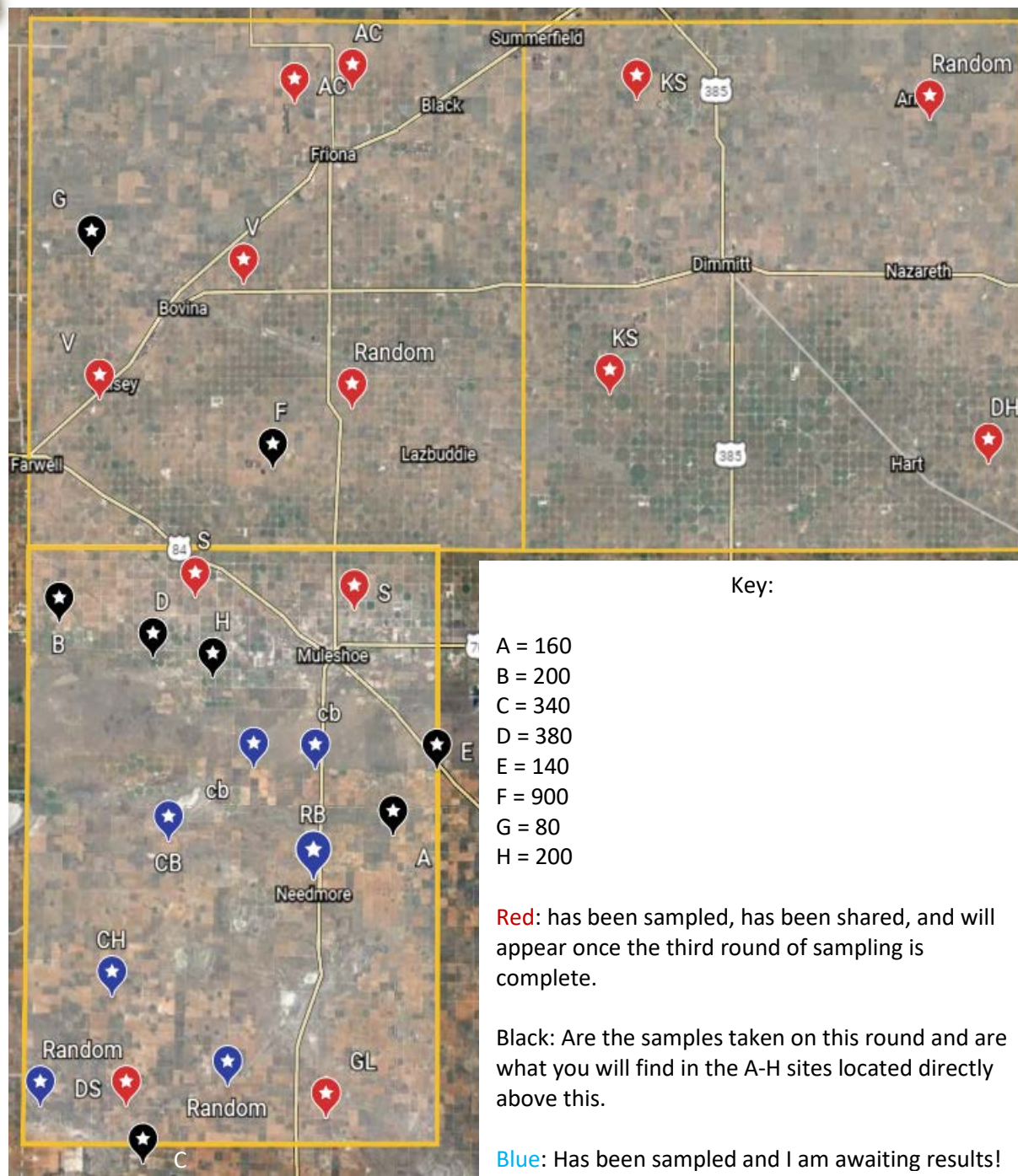


Click the button to follow us on Facebook!



Register and Listen in on our weekly IPM radio show "Southern High Plains"

[Click here](#)





These results yielded great results but I regret to inform you that identification was not run to specify what species of nematode we are dealing with. When speaking with the specialist it was conveyed that the populations were very diverse in stunt, dagger, and other free-living nematodes. That the Root knot and reniform were not abundant in this sampling round. I look forward to the second half of my results as designated by the blue locations on the above map. I will be conducted a third round as well that will, I believe, see a significant decrease as we move past harvest.

I want to thank all the producers who have allowed me to preform this sampling, and to the contacts who have put me in touch with these producers. If you are a producer that has allowed me to sample, I will be contacting you about these results!

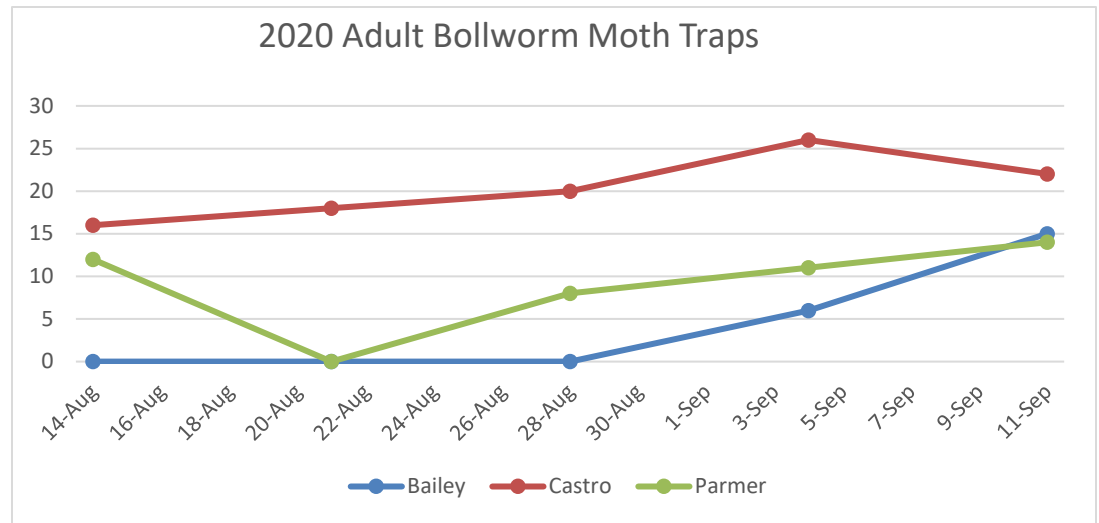
Got a 2020 Texas High Plains Cotton Harvest-Aid Guide put together by Murilo Maeda and Wayne Keeling cotton specialist and the systems agronomist out of Lubbock. Link to it can be found by clicking [Here](#).

As mentioned earlier if you believe you have a disease in any crop and would like me to come out to sample please feel free to contact me via E-mail or give me a call. Tests are run through Lubbock and are free of charge to the producer.

Had this on last week but here are the top **wheat** picks for this year as conducted by Dr. Jourdan Bell Extension Agronomist out of Amarillo. Link to follow.



[Click Here!](#)



Please see attached PDF for a message from Allstar Fuel!



*High Plains IPM Update* is a publication of the Texas A&M AgriLife Extension Service IPM Program in Bailey, Castro, and Parmer Counties.

Editor: John Thobe, Extension Agent-IPM  
 Contact information: 118 W Ave C Muleshoe,  
 Tx 79347

The Texas A&M AgriLife Extension Service provides equal access in its programs, activities, education and employment, without regard to race, color, sex, religion, national origin, disability, age, genetic information, veteran status, sexual orientation or gender identity.

The information given herein is for educational purposes only. References to commercial products or trade names is made with the understanding that no discrimination is intended and no endorsement by Texas A&M AgriLife Extension is implied.

The Texas A&M System, U.S. Department of Agriculture, and the Commissioners Courts of Texas Cooperating