

Austin County Ag News



Fall 2016

In this Issue

Fall Forage Seminar and Hay Show pg 1

89th Austin County Fair . . . pg 1

Multi County New Landowners Educational Series pg 2

Wine Show pg 2

South Central Texas Cow Calf Clinic pg 3

Austin County Pecan Show pg 3

Wildlife Habitat Federation Field Day pg 3

Upcoming Events pg 4

Fall Forage Seminar and Hay Show

The Fall Forage Seminar and Austin County Hay Show, sponsored by the Beef and Forage Committee of Austin County will take place on Friday, September 30th, at the Austin County Fair Expo Building in Bellville. The seminar is scheduled to begin with registration from 8:30 - 9:00 a.m., with the program starting at 9:00 a.m. This year's seminar will cover a variety of topics, such as Soil Fertility, Winter Pasture Management, and Long Range Weather Forecasting.

Judging of the hay samples will take place prior to the seminar, with the winners of the show being named at the conclusion of the seminar. This year's Austin County Hay Show will again offer awards to the top placing entries in each category. Three CEU's will be offered to pesticide applicators. There is a \$15 fee for your participation and everyone is encouraged to contact the Extension Office to preregister at (979) 865-2072, so we can have an accurate count for food and refreshments.

89th Austin County Fair

It's time once again for the annual Austin County Fair. This year's fair will be held October 11-16, at the Fairgrounds in Bellville. A full slate of activities and events are on tap for this year's fair, including some top notch entertainment, competitions for all ages and fun for everyone. Fair catalogs are available from the Austin County Fair Office and more information is available online at <http://austincountyfair.com>.



Multi-County New Landowners Educational Series



The Multi County New Landowners Educational Series continues on **Friday, October 21st**, and begins at 1:30 p.m. The program will be held at Cooper Farms in Fayette County. The address is 2001 Waldeck Rd Ledbetter TX. The October program will focus on Wildlife and Native Grass Restoration. Registration is \$20.00 per person and includes refreshments and educational materials.

The final program in the 2016 series will take place on **Friday, November 18th**, and will focus on Livestock Production for Small Acreage. The program will be at Sand Creek Ranch located at 26598 New Bremen Rd., New Ulm, TX. Registration is \$20.00 per person and includes refreshments and your educational materials. Two (2) CEU's will be offered to all pesticide applicators.

The Multi County New Landowner Educational Series is open to anyone that wants to attend, but it specifically targets new landowners in the Austin, Colorado, Fayette and Washington County areas. The agents in the four county area are currently planning for the 2017 New Landowner program. Details about next year's courses will be in the Winter 2016-2017 Austin County Ag Newsletter.

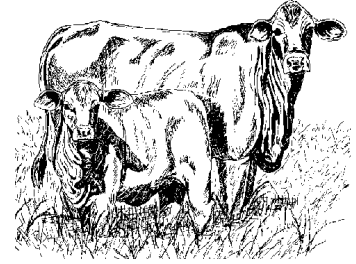
Austin County Wine Show

The Grape Growers Committee of Austin County is putting out a call to home wine makers and inviting them to the annual Austin County Fair Non-Commercial Wine Makers Contest & Show on Saturday, October 15th, 2016, at the Turnverien Building at the Austin County Fairgrounds in Bellville. There is no entry fee and the number of samples is unlimited, however, entrants must pay an admission fee or display a season pass or life member pass to enter the grounds. Prices for admission are - Adults & Children 12 & Over \$15.00, Senior Citizens 65 & Over \$6.00, Children 6-11 \$6.00. Entry forms may be obtained from the Austin County Fair Office, or online at www.austincountyfair.com. Entries will be accepted from 2:00 - 3:00 p.m. at the Turnverien Building. The judging will begin at 3:30 p.m. and will be followed by a tasting upon the completion of the show. Gold, silver and bronze medallions will be awarded to the top placers in each category, and belt buckles will be given to the Best of Show and Runner-Up, a special award given to the highest placing Austin County produced sample. The general rules and entry cards are also available on our website at <http://austin.agrilife.org>. For more information, please contact the Extension Office.



South Central Texas Cow Calf Clinic

The 45th edition of the South Central Texas Cow-Calf Clinic and Trade Show is set for Friday, October 28th, 2016, starting at 7:30 a.m. at the Washington County Fairgrounds in Brenham. The program will provide area beef producers with the latest information on beef cattle production. All attendees will be treated to an excellent educational program, covering topics such as chute side manner, carcass



evaluation, herd health, calving do's and don'ts and many others. Participants will be served a barbecue lunch and have an opportunity to visit with various animal and agriculture industry representatives. The registration fee is \$20.00 per person. For more information, contact the Washington County Extension Office. *Two CEU's will be given during the afternoon portion of the program. There will also be a drawing with a chance to win a grand prize of a heifer.*

Austin County Pecan Show

It's time once again for all commercial pecan growers and home pecan tree enthusiasts with a few pecan trees to gear up for the annual Austin County Pecan Show and Bake Show. Everyone with an interest in growing pecans or eating pecans is encouraged to participate. The pecan show and bake show will take place on Friday, November 18th, at the Courthouse and the Texas A&M AgriLife Extension Office in Bellville. Entries for the nut portion of the show will be



received between the hours of 8:30 a.m. and 10:00 a.m. A total of 50 pecans should be submitted per contestant in the pecan show. Pecans will be judged on the basis of kernel weight, fill, absence of blemishes and color. There is no limit on the number of entries. Bake show participants are asked to bring a printed copy of the recipe and your food item. Winners in the pecan show will receive prizes compliments of the Texas Pecan Producers and the Horticulture Committee of Austin County.

Wildlife Habitat Federation Native Prairie Discovery Tour

Friday, October 7, 2016

Location: St. John's Lutheran Church of Cat Spring
480 Ross Street, Cat Spring, Texas

Registration: 8:30 - 9:00 a.m., Program: 9:00 a.m. to 4:00 p.m.

Registration Fee: \$25 per person (charged at the door)

Participants will be provided with transportation, refreshments, lunch

Please register by Friday, September 30, 2016

Online: go to our website at <http://www.whf-texas.org>

or call Austin Co. Agrilife Extension Office at 979.865.2072

Day's events include: Pre-tour instruction - Morning Bus/Walking Tour
- Lunch - Afternoon Bus/Walking Tour

Participants will have a hands-on opportunity to explore local native grass prairie sites under the guidance of some of the state's top botanists, entomologists and biologists. Guided tours on sites restored as a part of WHF's Wildlife Corridor Program will include plant and insect identification, viewing results of various prairie restoration practices and a rainfall simulator demonstration. Three CEU's will be offered to pesticide applicators: two in the general category and one in Integrated Pest Management (IPM).

Just a Few Dates to Remember

September

30 - Fall Forage Seminar/Austin County Hay Show - Bellville (3 CEU's)

October

7 - Wildlife Habitat Federation Field Day
15 - Austin County Non-Commercial Wine Show
11-16 - Austin County Fair - Bellville (Extension Office will be relocated to the Fairgrounds)
17 - Extension Office will be closed
21 - Multi County New Landowner Program - Fayette County
28 - South Central Texas Cow Calf Clinic- Washington County Fairgrounds in Brenham (2 CEU's)

November

11 - Office Closed in observance of Veterans Day
20 - Multi County New Landowner Program - Austin County (2 CEU's)
18 - Austin County Pecan Show
23-24 - Office Closed in observance of Thanksgiving Holiday

Mailing Address:
Courthouse, 1 East Main, Bellville, TX 77418
Physical Address: 20 S. Holland, Bellville, TX 77418
Email: Travis.Gonzales@ag.tamu.edu
Website - <http://austin.agrilife.org>
Phone 979-865-2072
Fax 979-865-2065

Sincerely,



Travis Gonzales
County Extension Agent-Ag/NR
Austin County

The members of Texas A&M AgriLife will provide equal opportunities in programs and activities, education, and employment to all persons regardless of race, color, sex, religion, national origin, age, disability, genetic information, veteran status, sexual orientation or gender identity and will strive to achieve full and equal employment opportunity throughout Texas A&M AgriLife.