

# Austin County Ag News



**Fall 2015**

***In this Issue***

Fall Forage Seminar and Hay Show..... pg 1

87<sup>th</sup> Austin County Fair. . . . . pg 1

Multi County New Landowners Educational Series . . . . . pg 2

Wine Show . . . . . pg 2

South Central Texas Cow Calf Clinic . . . . . pg 3

Beef Quality Assurance Training . . . . . pg 3

Austin County Pecan Show . . . . . pg 3

Wildlife Habitat Federation Field Day . . . . . pg 4

Citrus Field Day..... pg 5

Upcoming Events . . . . . pg 5

## **Fall Forage Seminar and Hay Show**

The Fall Forage Seminar and Austin County Hay Show, sponsored by the Beef and Forage Committee of Austin County will take place on Friday, September 25<sup>th</sup>, at the Austin County Fair Expo Building in Bellville. The seminar is scheduled to begin with registration from 8:30 - 9:00 a.m., with the program starting at 9:00 a.m. This year’s seminar will cover a variety of topics, such as Producing Quality Forage, Winter Pasture Management, Weed and Brush Control Products, Grasshopper and Fall Army Worm Control, and an Update from the Texas Department of Agriculture.

Judging of the hay samples will take place prior to the seminar, with the winners of the show being named at the conclusion of the seminar. This year’s Austin County Hay Show will again offer awards to the top placing entries in each category. Three CEU’s will be offered to pesticide applicators. One in Integrated Pest Management, one in the General Category and one in Laws and Regulations. There is a \$10 fee for your participation and everyone is encouraged to contact the Extension Office to preregister at (979) 865-2072, so we can have an accurate count for food and refreshments.

## **88<sup>th</sup> Austin County Fair**

It’s time once again for the annual Austin County Fair. This year’s fair will be held October 7-11, at the Fairgrounds in Bellville. A full slate of activities and events are on tap for this year’s fair, including some top notch entertainment, competitions for all ages and fun for everyone.



Fair catalogs are available from the Austin County Fair Office and more information is available online at <http://austincountyfair.com>.

## Multi-County New Landowners Educational Series



The Multi County New Landowners Educational Series continues on **Friday, October 16<sup>th</sup>**, and begins at 1:30 p.m. The program will be held at the Fayette County Agricultural Building in La Grange. The October program will focus on Rainwater Harvesting, Turf Grass, and Irrigation. Registration is \$20.00 per person and includes refreshments and educational materials.

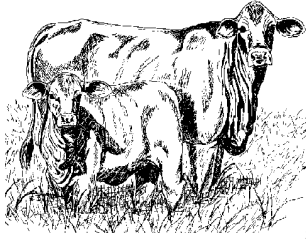
The final program in the 2015 series will take place on **Friday, November 20<sup>th</sup>**, and will focus on Livestock Production for Small Acreage. The program will be at Washington County Fair Grounds 305 E. BlueBell Rd. Registration is \$20.00 per person and includes refreshments and your educational materials. Two (2) CEU's will be offered to all pesticide applicators.

The Multi County New Landowner Educational Series is open to anyone that wants to attend, but it specifically targets new landowners in the Austin, Colorado, Fayette and Washington County areas. The agents in the four county area are currently planning for the 2016 New Landowner program. Details about next year's courses will be in the Winter 2015-16 Austin County Ag News Letter.

## Austin County Wine Show

The Grape Growers Committee of Austin County is putting out a call to home wine makers and inviting them to the annual Austin County Fair Non-Commercial Wine Makers Contest & Show on Saturday, October 10<sup>th</sup>, 2015 at the Turnverien Building at the Austin County Fairgrounds in Bellville. There is no entry fee and the number of samples is unlimited, however, entrants must pay an admission fee or display a season pass or life member pass to enter the grounds. Prices for admission are - Adults & Children 12 & Over \$15.00, Senior Citizens 65 & Over \$6.00, Children 6-11 \$6.00. Entry forms may be obtained from the Austin County Fair Office, or online at [www.austincountyfair.com](http://www.austincountyfair.com). Entries will be accepted from 2:00 - 3:00 p.m. at the Turnverien Building. The judging will begin at 3:30 p.m. and will be followed by a tasting upon the completion of the show. Gold, silver and bronze medallions will be awarded to the top placers in each category, and belt buckles will be given to the Best of Show and Runner-Up, a special award given to the highest placing Austin County produced sample. The general rules and entry cards are also available on our website at <http://austin.agrilife.org>. For more information please contact the Extension Office.





## South Central Texas Cow Calf Clinic

The 44<sup>th</sup> edition of the South Central Texas Cow-Calf Clinic and Trade Show is set for Friday, October 23<sup>th</sup>, 2015, starting at 7:15 a.m. at the Washington County Fairgrounds in Brenham. The program will provide area beef producers with the latest information on beef cattle production.

All attendees will be treated to an excellent educational program, covering topics ranging from livestock handling to forage management. Participants will be served a barbecue lunch and have an opportunity to visit with various animal and agriculture industry representatives. The registration fee is \$20.00 per person. For more information, contact the Extension Office. *Two CEU's will be given during the afternoon portion of the program.*

## Beef Quality Assurance Training

Beef Quality Assurance is a national program that provides guidelines for beef cattle production. The program raises consumer confidence through offering proper management techniques and a commitment to quality within every segment of the beef industry.

Texas A&M Agrilife Extension Service Austin County would like to invite everyone to attend the BQA training which will be held at the Washington County Fairgrounds located at 305 E Bluebell Rd, Brenham TX. The program will be conducted by Texas A&M Agrilife Extension Livestock Specialist, Dr Joe Paschal. For more information please feel free to contact the Austin County Agrilife Extension office at 979-865-2072.

## Austin County Pecan Show

It's time once again for all commercial pecan growers and home pecan tree enthusiasts with a few pecan trees to gear up for the annual Austin County Pecan Show and Bake Show. Everyone with an interest in growing pecans or eating pecans is encouraged to participate. The pecan show and bake show will take place on Friday, November 20th, at the Courthouse and the Texas A&M AgriLife Extension Office in Bellville. Entries for the show will be received between the hours of 8:30 a.m. and 10:00 a.m. A total of 50 pecans should be submitted per contestant in the pecan show. Bake show participants are asked to bring a printed copy of the recipe and your food item. There is no limit on the number of entries. Pecans will be judged on the basis of kernel weight, fill, absence of blemishes and color. Winners in the pecan show will receive prizes compliments of the Texas Pecan Producers and the Horticulture Committee of Austin County.



## **Wildlife Habitat Federation Field Tour**

### **Plant Identification for Landowners and Landscape Professionals**

In conjunction with the Coastal Prairie Partnership (CPP) and the Native Prairies Association of Texas (NPAT), WHF will be hosting one of the workshops on the third day of the Southern Plains & Prairies Conference in Cat Spring, Texas, and you are invited. The day will include pre-tour instruction, a bus and walking tour of nearby relict tracts plus those restored as part of WHF's Wildlife Corridor Program and lunch. While visiting the prairie remnants, participants will have a hands-on opportunity to learn to recognize native prairie species from some of the top plant identification experts in the state.

For more information and to register: Visit our website at [www.whf-texas.org](http://www.whf-texas.org) and click on UPCOMING EVENTS By Mail: Send your mailing address to: WHF, PO Box 66, Cat Spring, Texas 78933.

If you wish to attend the full 3-day Southern Plains & Prairies Conference (See below), please go directly to their website to sign up: <http://southernplainsconference.org>.

Southern Plains & Prairies Conference  
Houston, TX - November 12-14, 2015

Coastal Prairie Partnership (CPP) and Native Prairies Association of Texas (NPAT) are excited to announce the 2015 Southern Plains & Prairies conference (formerly the State of the Prairie conference), and we want you to join us!

This year's conference will bring together the best minds in prairie conservation from throughout the states of Texas, Louisiana, Oklahoma, and beyond. These experts will provide practical methods to restore, conserve, manage, enjoy, and educate about our valuable and vulnerable prairies. Our conference experience is designed for a broad audience: private landowners, natural resource professionals, governmental agencies, educators, landscape architects, naturalists, volunteers, and others looking for real-world solutions. Each experience and presentation will be rated from novice to expert to assist our guests in choosing the learning experience which best suits their needs.

The Houston Zoo and prairies throughout Greater Houston will be our classroom at this year's conference. Our presenters and experiences will focus on three key areas: techniques and theories of prairie restoration; the economics of prairie restoration, management, ecosystem services, and recreation; and creating connected, diverse prairie landscapes. For more information visit our website: <http://southernplainsconference.org>.

## Citrus Field Day

The Horticulture Committee of Austin County will be hosting a citrus field day in Sealy at the Hill Center on October 30<sup>th</sup>. Registration will be at 1:00pm with the program beginning at 1:30pm. Texas A&M Agrilife Extension Program Specialist, Monte Nesbitt will present information on Citrus Tree Production. Melissa Bart of Texas Department of Agriculture, will also give an update on Pesticide Laws and Regs. The cost of the program will be \$20. 1 General and 1 Laws and Regs CEU's will be given at the program.

### Just a Few Dates to Remember

September	25	-	Fall Forage Seminar/Austin County Hay Show - Bellville (3 CEU's)
October	2	-	Beef and Forage Committee Meeting
	10	-	Austin County Non-Commercial Wine Show
	7-11	-	Austin County Fair - Bellville (Extension Office will be relocated to the Fairgrounds)
	12	-	Extension Office will be closed
	16	-	Multi County New Landowner Tour - Brenham
	23	-	South Central Texas Cow Calf Clinic- Washington County Fairgrounds in Brenham (2 CEU's)
	27	-	Bluebonnet Master Gardener Association Board Meeting
	30	-	Citrus Field Day Sealy
November	11	-	Office Closed in observance of Veterans Day
	14	-	Wildlife Habitat Federation Field Day
	20	-	Multi County New Landowner Program - Brenham (2 CEU's)
	20	-	Austin County Pecan Show
	26-27	-	Office Closed in observance of Thanksgiving Holiday

Mailing Address:  
Courthouse, 1 East Main, Bellville, TX 77418  
Physical Address: 20 S. Holland, Bellville, TX 77418  
Email: Travis.Gonzales@ag.tamu.edu  
Website - <http://austin.agrilife.org>  
Phone 979-865-2072  
Fax 979-865-2065

Sincerely,



Travis Gonzales  
County Extension Agent-Ag/NR  
Austin County

Educational programs of the Texas A&M AgriLife Extension Service are open to all people without regard to race, color, religion, sex, national origin, age, disability, genetic information, or veteran status. The Texas A&M University System, U.S. Department of Agriculture, and the County Commissioners Courts of Texas Cooperating.